

本件の報道解禁につきましては、平成29年3月20日(月)午後7時(日本時間)以降にお願いいたします。

Scientific Reports

<http://www.nature.com/srep/>

10.1038/srep44748

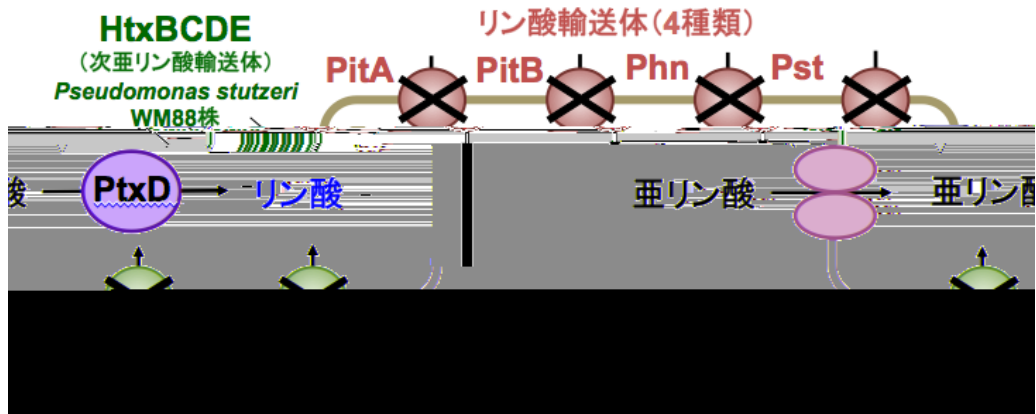
" A Novel Biocontainment Strategy Makes Bacterial Growth and Survival
Dependent on Phosphite"

Ryuichi Hirota, Kenji Abe, Zen-ichiro Katsuura, Reiji Noguchi, Shigeaki Moribe,
Kei Motomura, Takenori Ishida, Maxym Alexandrov, Hisakage Funabashi, Takeshi Ikeda,
Akio Kuroda

○



[]



1

RN1008

4

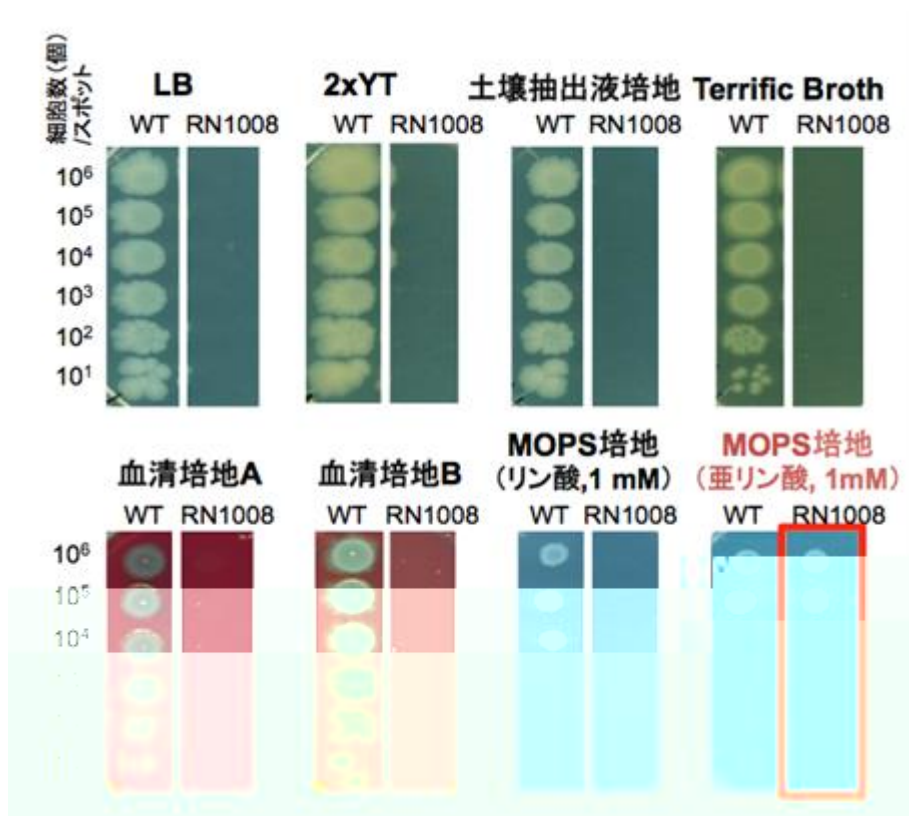
PitA, PitB, Phn, Pst

3

UhpT, UgpB, GlpT

HtxBCDE

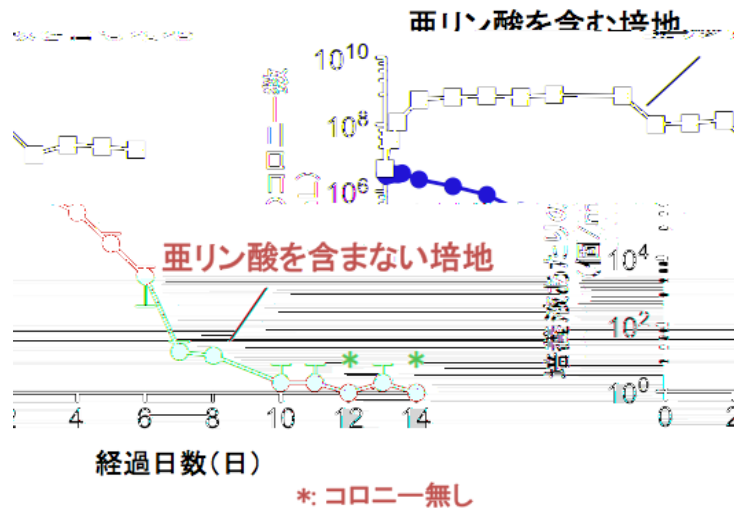
PtxD



RN1008

(LB 2xYT Terrific broth MOPS-

(A B)



(MOPS-) RN1008 (2xYT) RN1008

1

2

[]

CO₂

CO₂

739-8530

Tel 082-424-7749 Fax 082-424-7047

E-mail hirota@hiroshima-u.ac.jp

102-0076

's

Tel 03-3512-3543 Fax 03-3512-3533

E-mail alca@jst.go.jp

()

739-8511

- -

Tel 082-424-6762 Fax 082-424-6040

E-mail koho@office.hiroshima-u.ac.jp

102-8666

Tel: 03-5214-8404 Fax: 03-5214-8432

E-mail: jstkoho@jst.go.jp

