

18

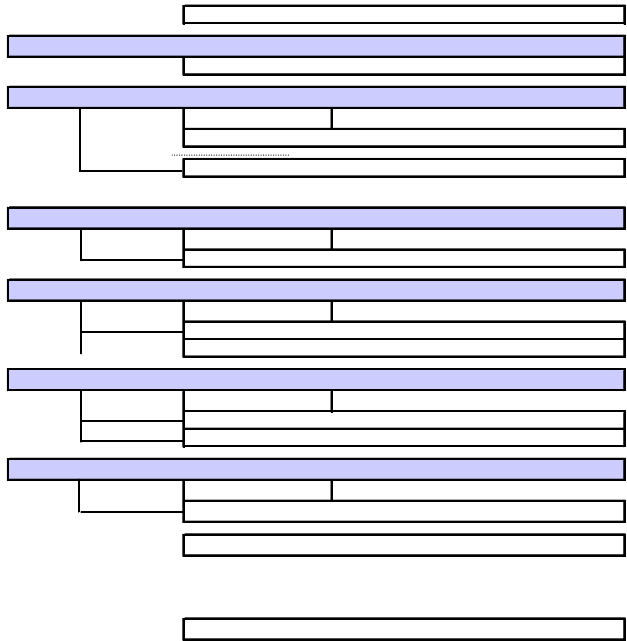
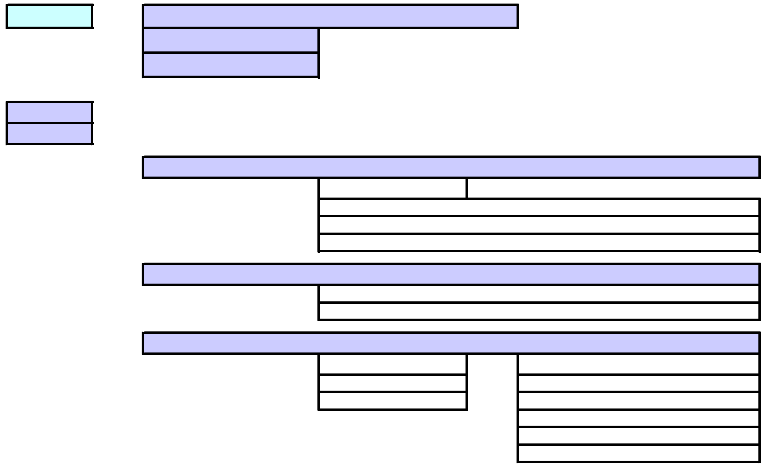
1 9

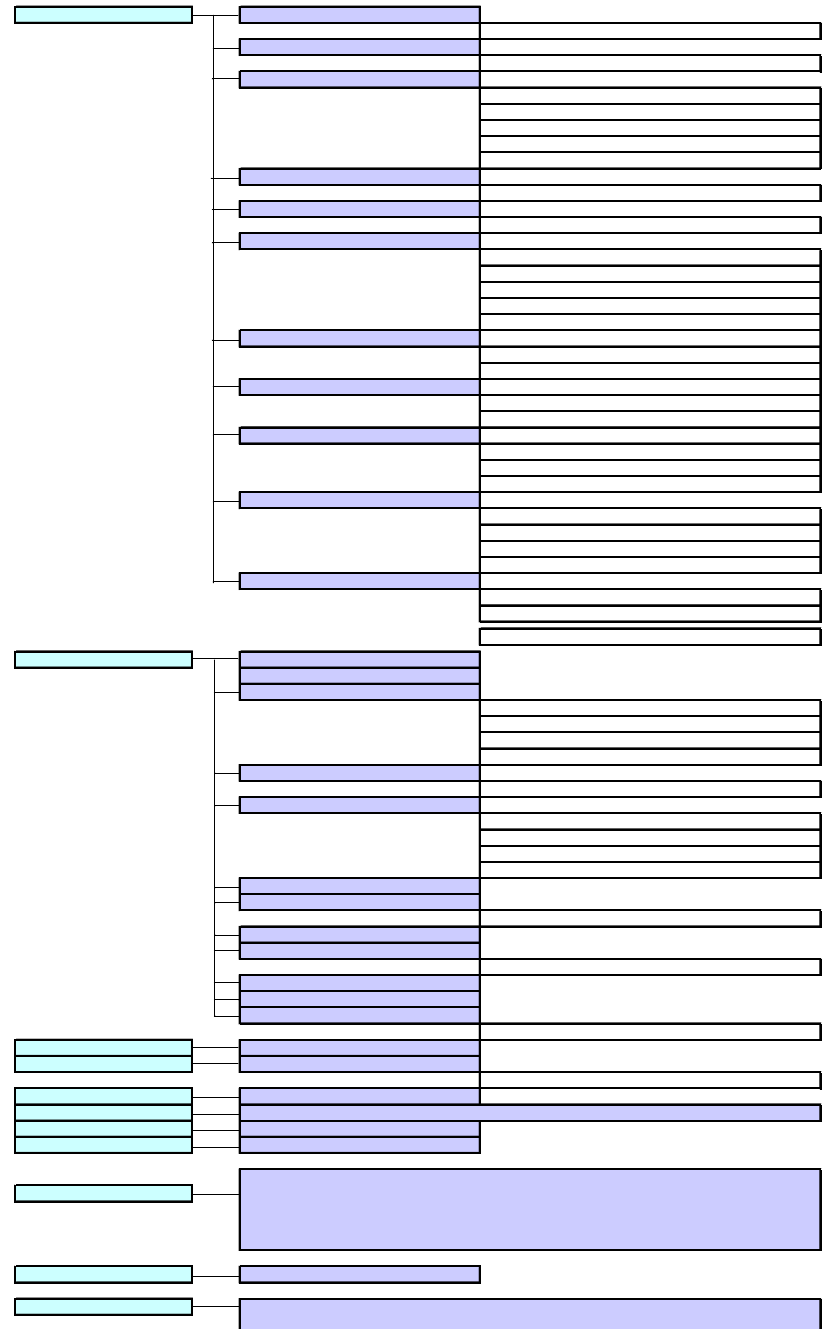
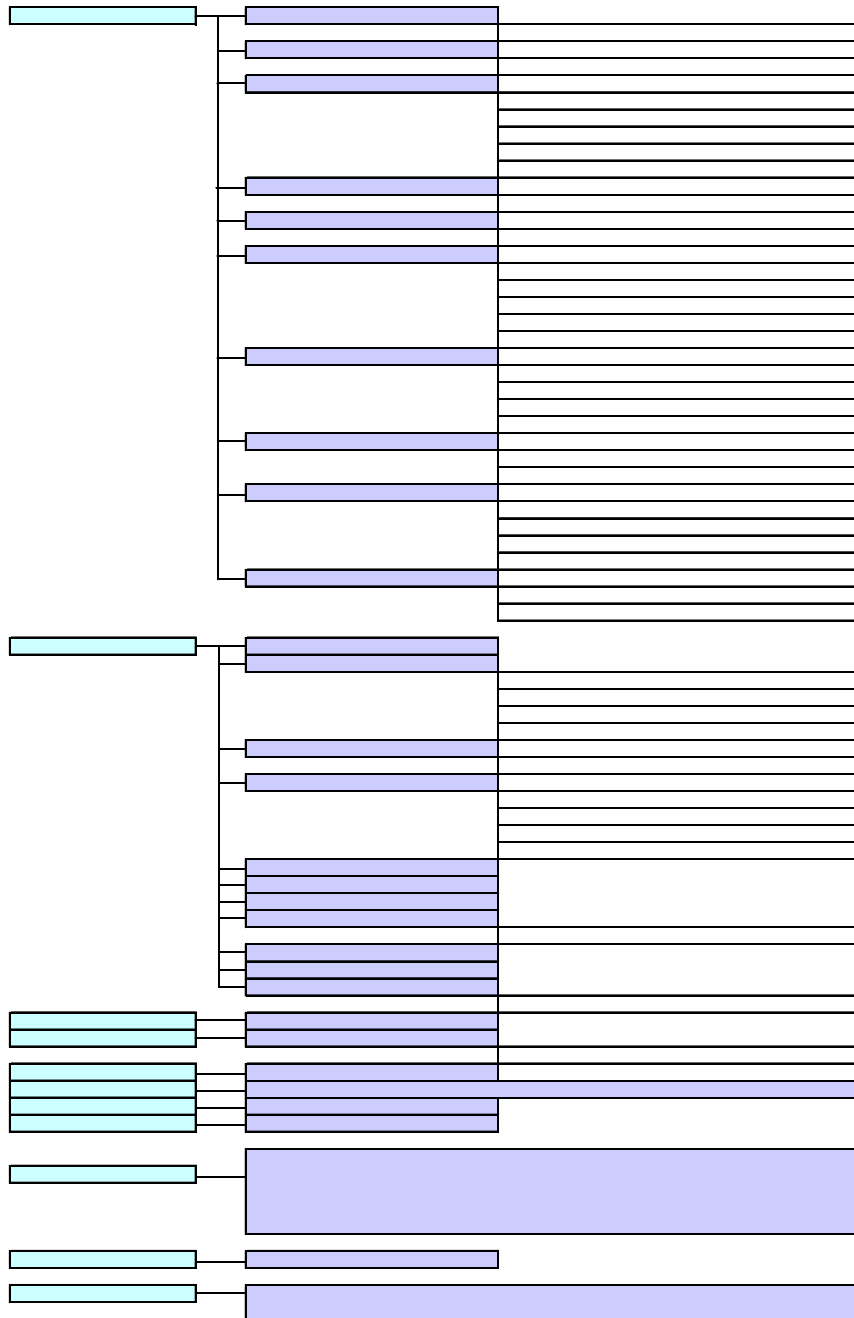


\$+ ' \$ \$ & &\$

\$Sž#(# fi *+ fi fi
'ž&% fi(#& fi fi fi
\$#
'žS , \$ž+'* fi fi
\$ž& (

S(\$







\$+

\$+

\$((

%ž###

\$+

\$ž ##

% &

%

\$*

& \$)

\$(

\$(

\$+%

\$.

%#

\$+

\$+

(HINET)

E-

%Ž*),

%##(

SŽ) +

S) &

&Ž#&

SŽ(#(

% (

\$+

6B8

S#



\$! (

\$+

SS

\$+

' Ž(##



SS



SS

\$+

\$+
\$*

%\$ 6B8

6B8

S#

C76A

S#

\$+

\$

\$

\$

\$

%\$

&

('

*,

\$+

\$+

\$

\$+

()

\$

\$*

ž * ž

S* S*) S

S+)+
S+ %
&#

%

%S &#

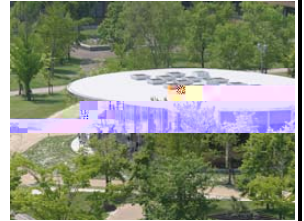
C76A S+

C76A

C76A

C76A

la place



_a_p_ace

S+ S+

S+ S# S*

S,

52 a	a 19 19
b	b 18 12 18 18 10 23 18 12 27
c	c 11 11
d	d 26 19 21 37
e	e
a	a 19 445 21 37 24 (18 4 18) (18 7 18) (18 7 18) (19 2 13) 6 13 16 3 ⁵

18

b

b

(51- a)

19

a

a

18

PDCA

18

q %

			18	
54	54	a	a	
			18	
			18	
			IS09001	PDCA
			17	IS09001
				PDCA
		b	b	
			17	18
			18	
55	55			
			19	21
			66	
			18	11
			11	12
			19	19
				18

56	56	<p>18 4</p> <p>10 NEDO</p> <hr style="border-top: 1px dashed black;"/> <p>ISO9001</p>
57	<p>57</p> <p>a</p> <hr style="border-top: 1px dashed black;"/> <p>b</p>	<p>a</p> <p>27</p> <p>((33³⁶ 52 3)²⁸) (134)</p> <hr style="border-top: 1px dashed black;"/> <p>b</p>
58	<p>58</p> <p>a</p>	<p>a</p> <p>28 3 2, 144 GP</p> <p>GP</p>

		13	68	(10)	2/15
	b				CC
		10			
			220		
			150		
		CC		JST	

(1)

--

59	59 a		a	
	b		b	
			19	
				18
60	60 a		a	
	b		b	

16

18

(1)

61

61

a

a

18

17

18

18 10

	c	c		
			19	18
62	62			
		(1)	19	
		(2)	18	(1)
		(3)		
		(4)		
			17	
				18 10
			18	65
		31	60	19
			19	
			18	19
			15	

			19					
			19					
			18	16	18			18
			19				20	
								17
						250		

- - - - -
- - - - -
- - = - = =
- - - - -

(1)

67

67

19

243

0

b.		b						
			19				19	
			19					19
c.	(I	c	ISO001			ISO	19	
SC0001)								
a.		a	52	b				
b.		b						
a.		a.	18	17				
b.		b						
c.		c						
a.		a					ERP	

	b		b	18			18
	c		c			61	ERP
	d		d		ERP	19	ERP
	e		e	18		20	30
	f		f	18			18
	g		g	18			
68	68						
	16 17			18			
						18	
						(1)	
						(2)	
						(3)	
						(4)	
						(5)	
						(6)	
						(7)	
						(8)	

69

69

67- b





18

15

18

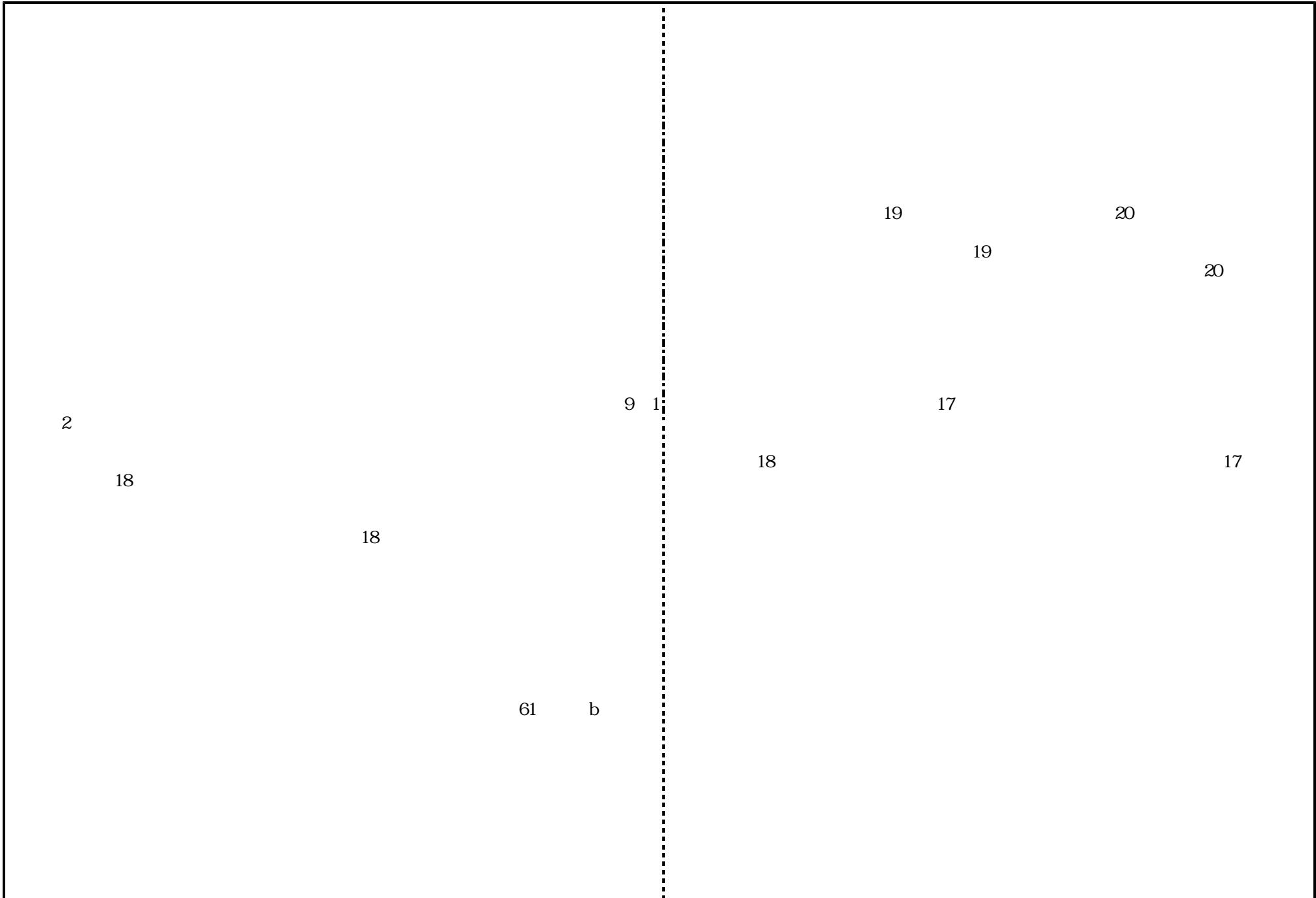
24

11

19

18

13



(2)

70	70			
	a		a	
	b		b	
	c		c	JST
	d		d	in
			18	
			195	

71

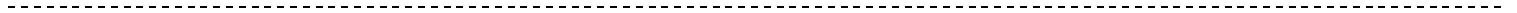
71	
a	a 19 439 18
b	b 50 76 511
c	c 18 18 18 12
	18 16 19 0 26
a	a 19
b	b 18 11 100 150

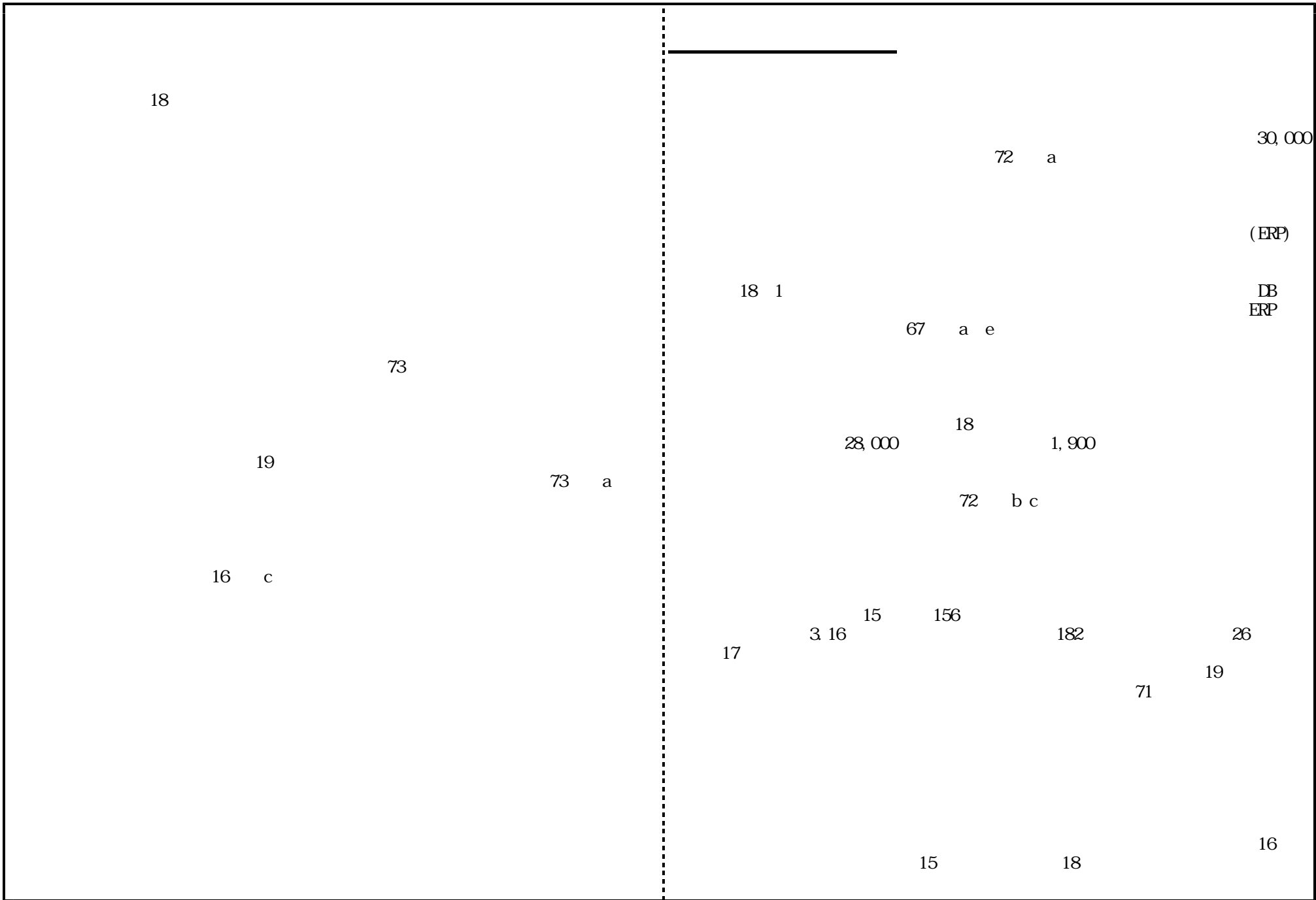
(2)

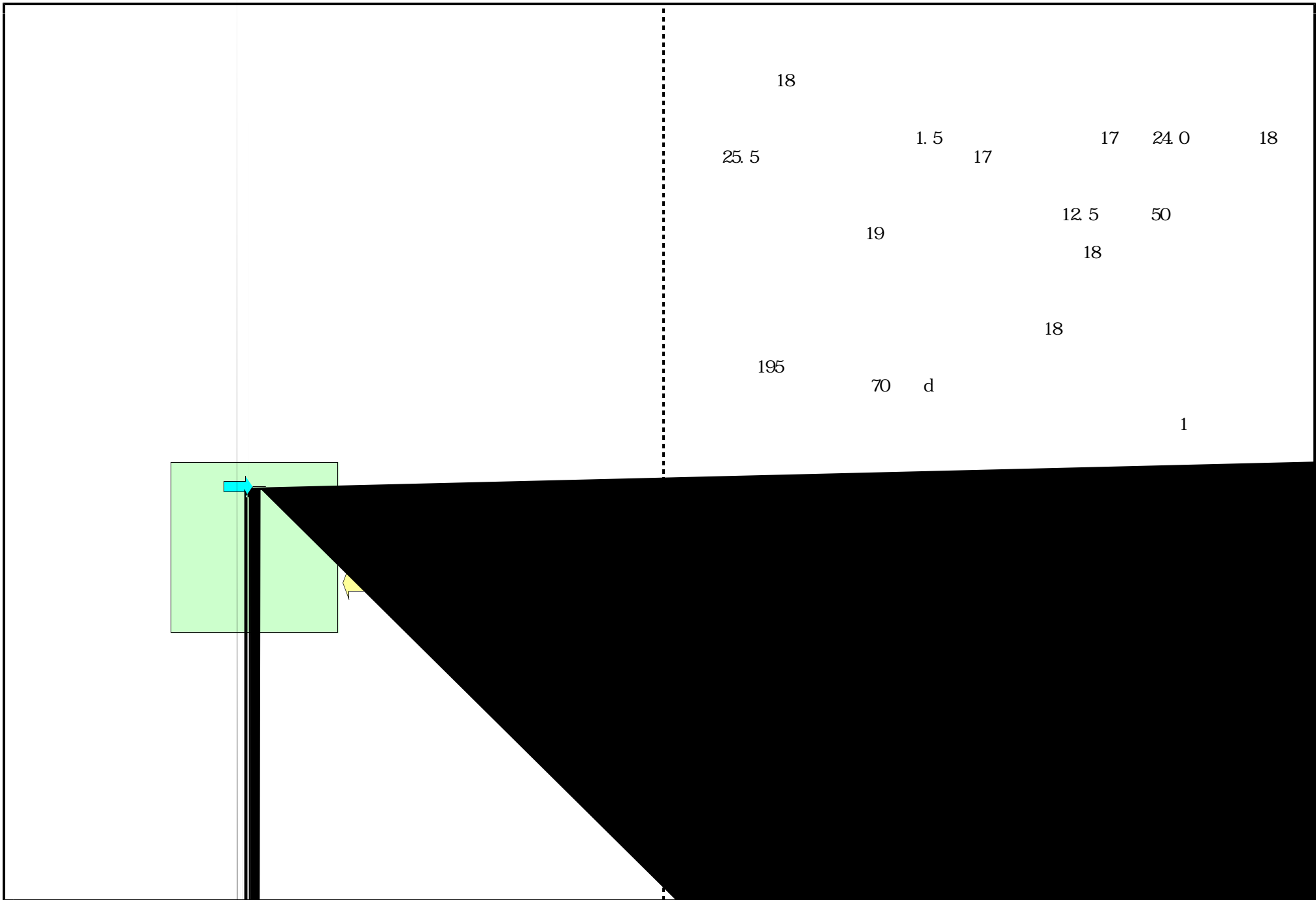
72	72		a		
	a		30,000		
				19	
			28,000		1,900
	b		b		
			4 15	2 80	18

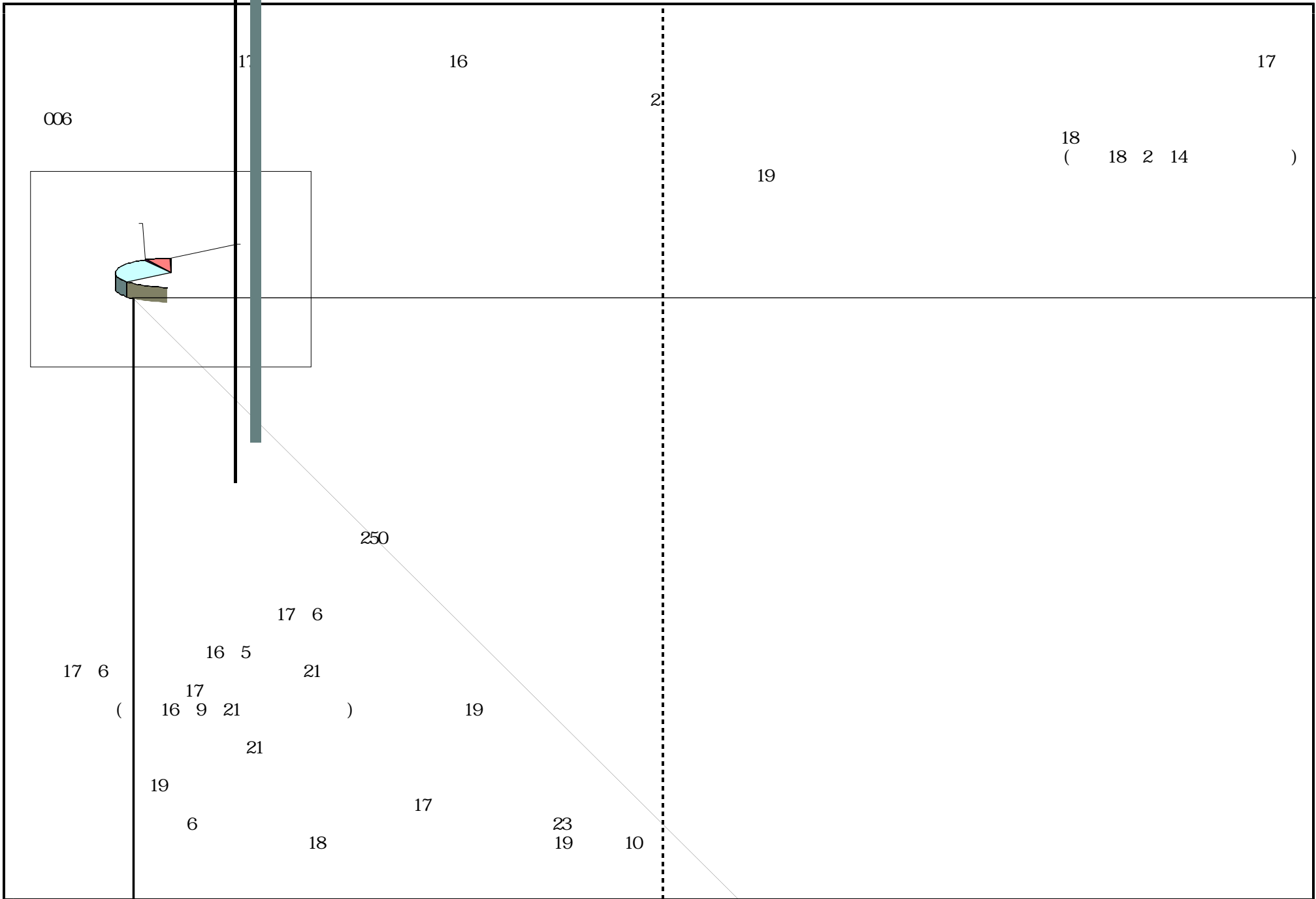


73









17
17

12

18 10

12

18

18 12

17

(3)

74	74		DB ReaD 18 ERP(Enterprise Resource 61 ERP 67- c 19 67- d ERP 17	ER
	a.	P ^a	18 ERP 67- c	ER
	b.	b	17	

75

75

a.

a

19

b.

b

19

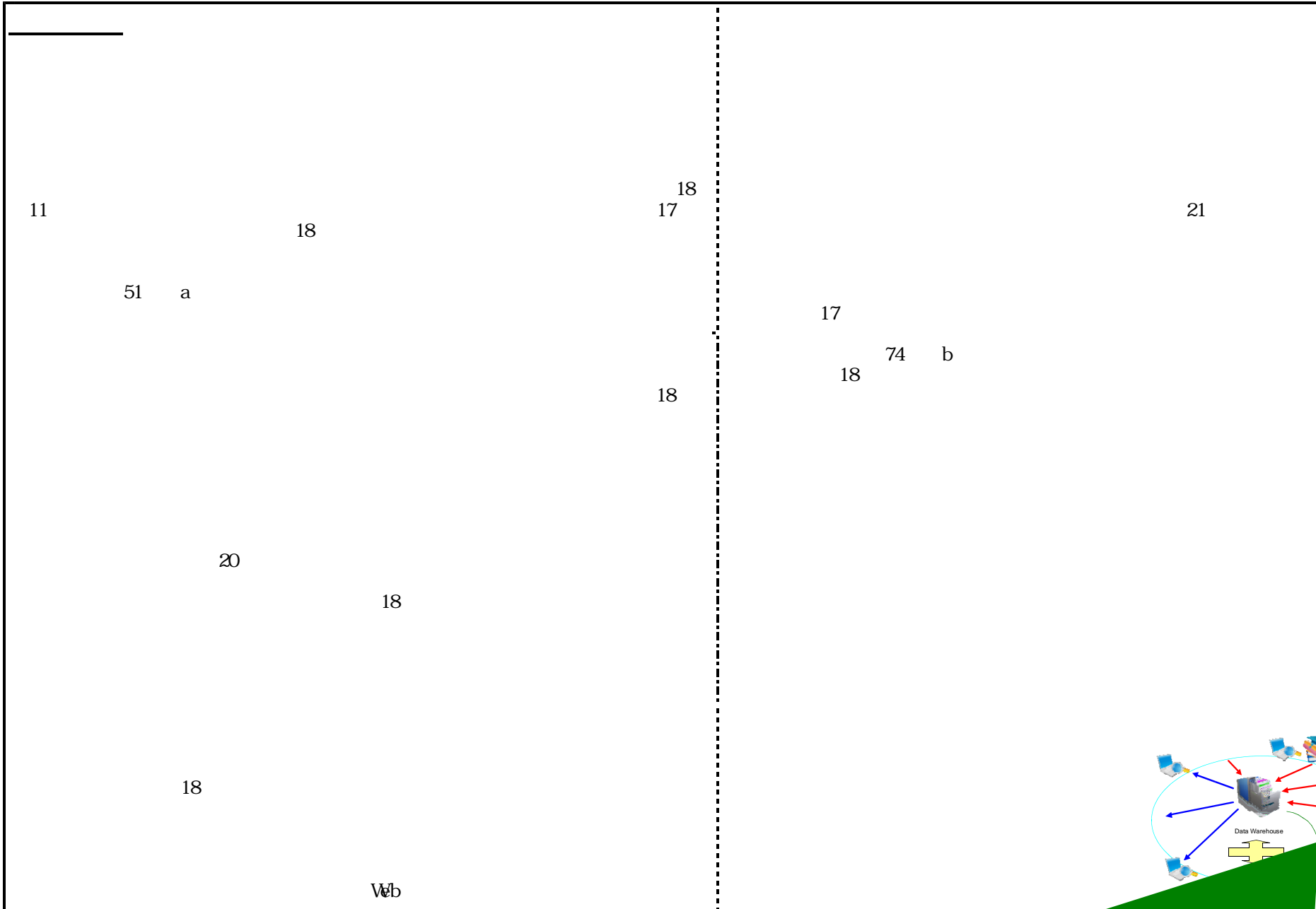
51 a

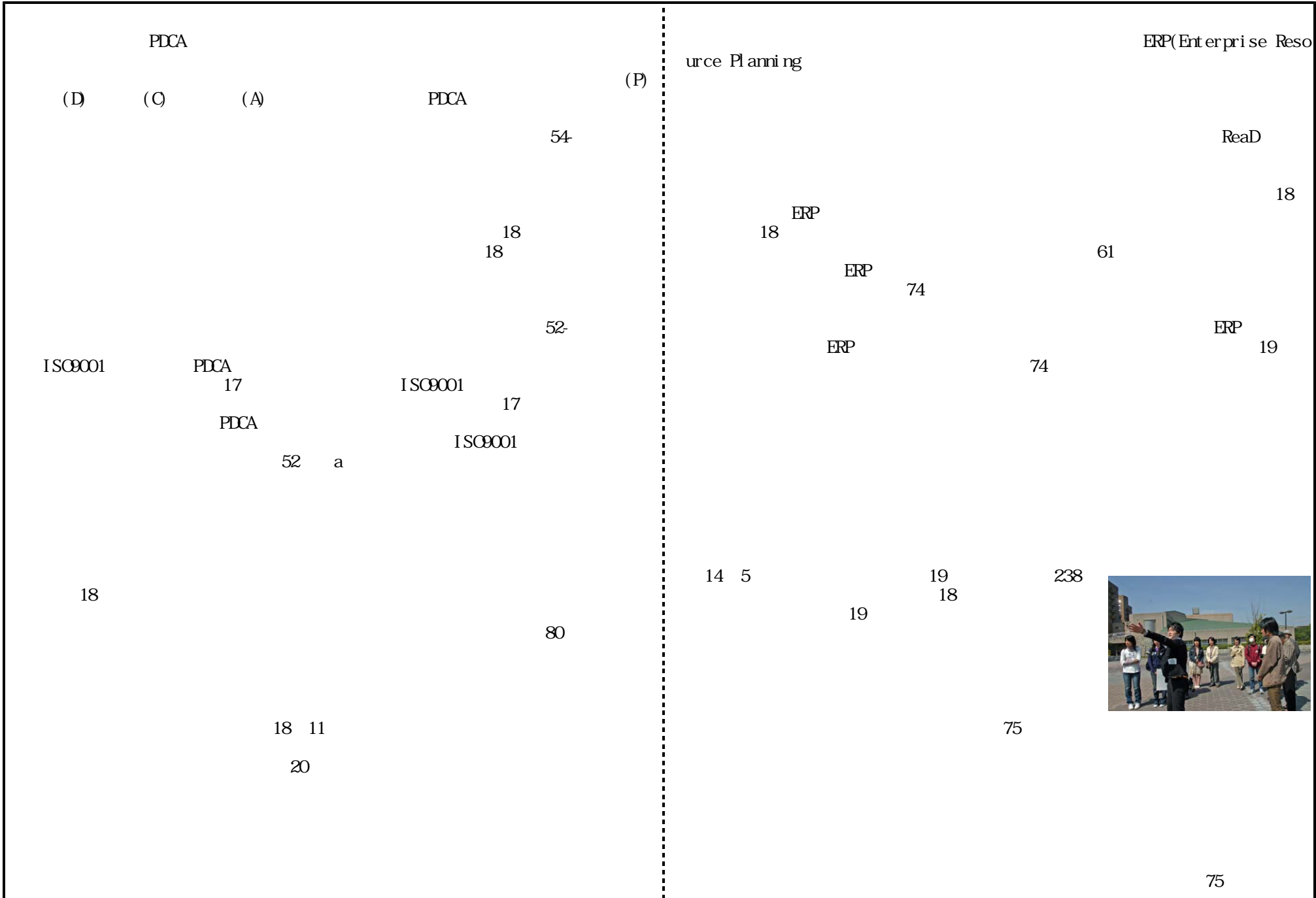
(3)

76	76 a b a	a VMS (Web Management System) VMS 11 VMS 12 VMS b 18 3,005,717 1,767,970 15 8,168 18 258,299 10 News Letter 16 26 a HU-style HU information

b		b 18 11 U
a		a 23 43
b		b ()
c		c () (17) () () (60) 30 () (60) 30
d		d 16 18 19

[Empty rectangular box]





Г

2006

17

17

18

18

19

(18
97)

19

(2005

18

19

Annual Research Report

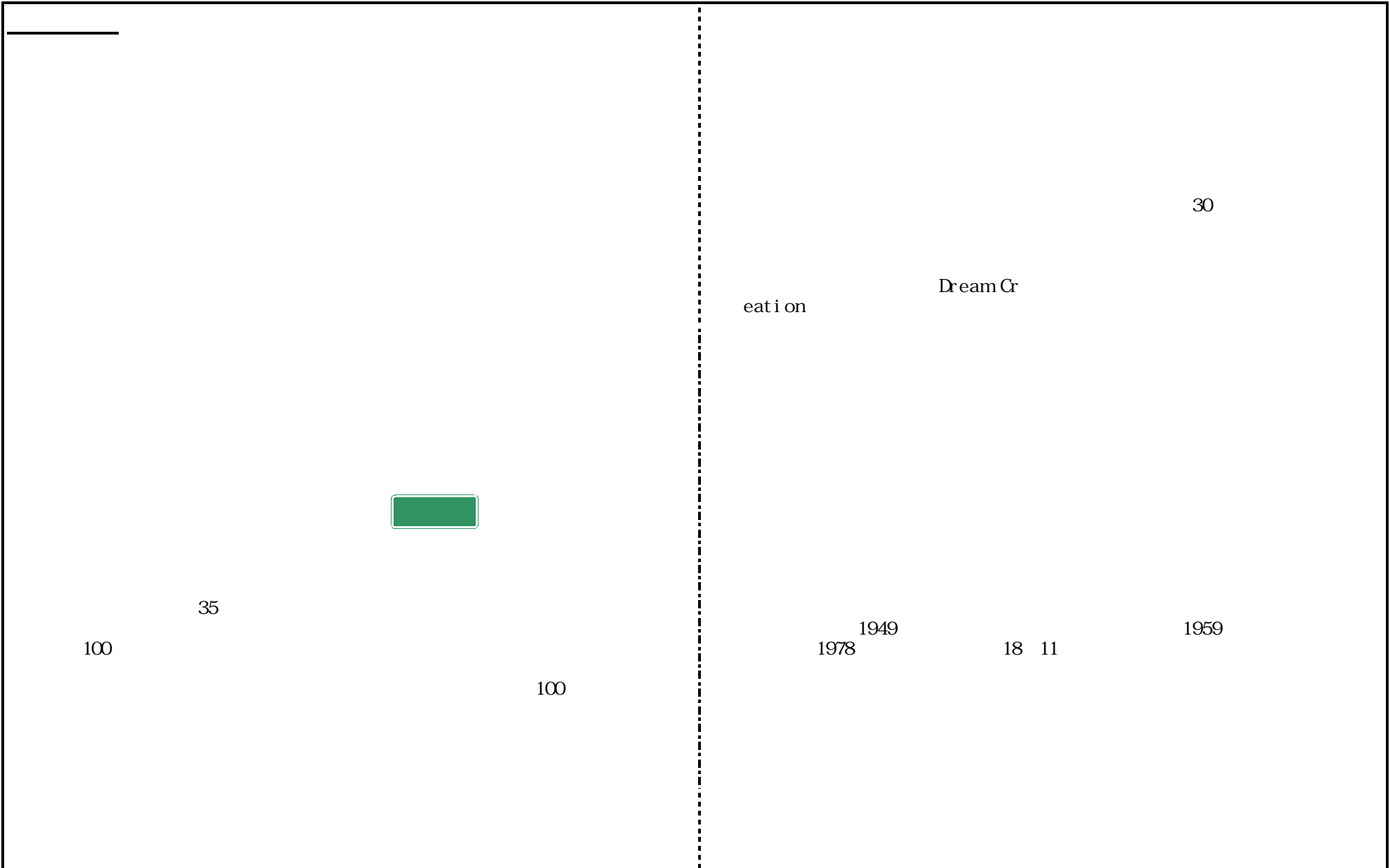
300

	e	e	
78	78		
	a	a	
	b	b	
	c	c	
		18	

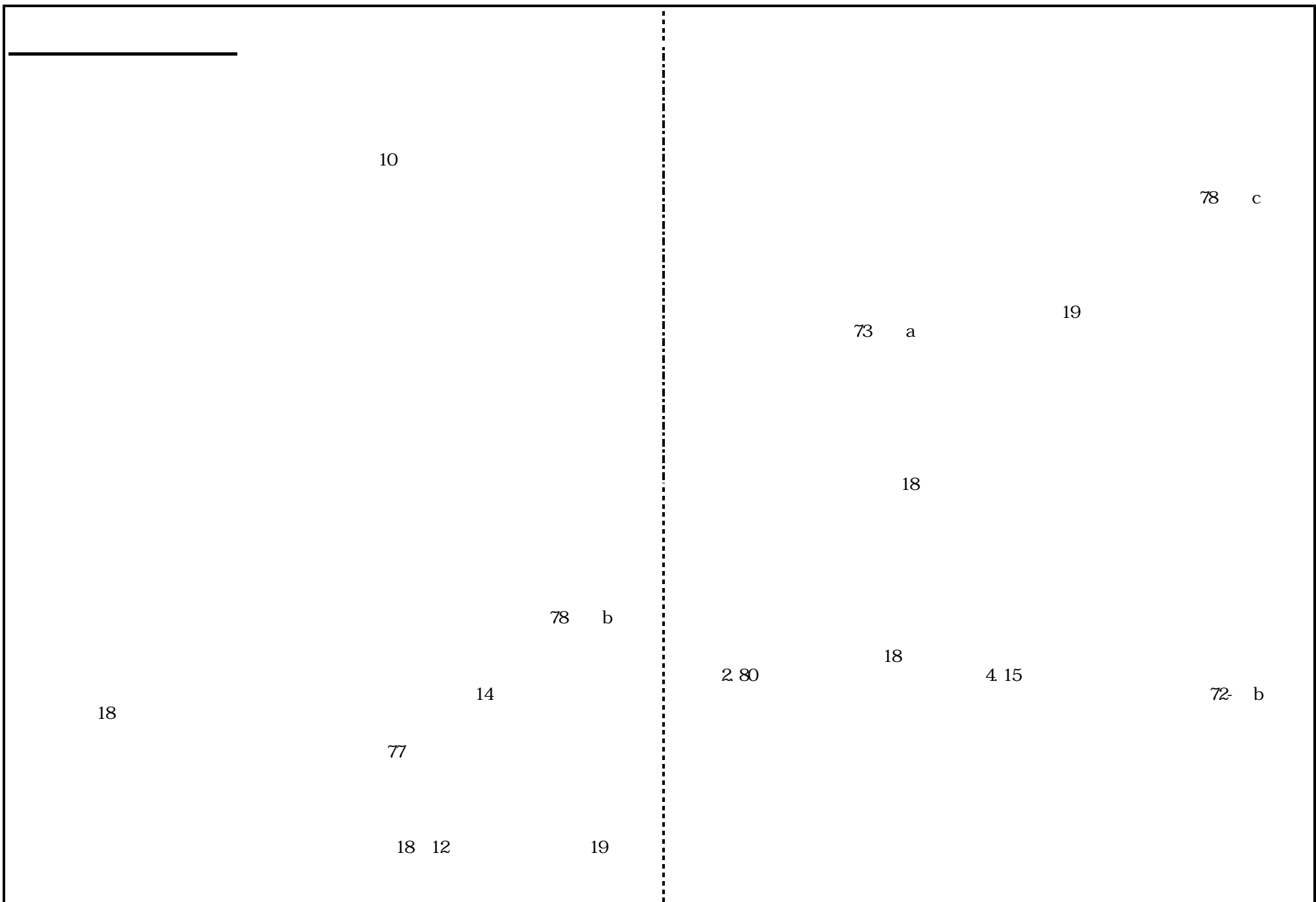
(4)

79	79		a	
	a		a	
	b		b	
				18
			PRIR	18
			2006	

	b	b 18
	a	a 25 11
	b	b E- 74 17 92 27 22 12 265 1,505 2,769 2005 16 163 MCA
	c	c



_____ }



17
17

18 17

18 10

12

17

18 11

12

19

18

18 12

17

(1)

[Redacted]

1	1 a	a 18 18 63)
	b	b
	b	b INU

2	2				
				1,620	260
		165			21

		175	227	8,924	
		3,816	18	827	93,265
		18			

3	3				
	a	TCIC	a	TCIC	P
			18	19	
				16	17
				18	
	b		b		

5	5	
6	6	
		3

(1)

--

7	7	
	a	a 18 AO 12
	b AO	b 18 18 11 18
	a	a 1
	b	b TCEFL 16 18 14

AO

20 20 19

a a

b b AO

12
AO 20

8 8

16 17 18

a a

		17
		18 10 12
		10 17 18
		12 7 18
		8 150 10 13
9	9	
	a	a
	b	b 12
		12
		12

	a	a 33 18 28 21 10 97 49
	b	b 10 18 48 258 47 13 22 20 70 100 19 109 15 100 30 25 3200 50 30 60
10	10	19

18

Grade Point Average

GPA

12

11

26

10

FD 18

1

13

13

10

MOT

a

a 9 a

b

b.

9

10

47

34

30

10

17
10

	a	a 19 2
	b	b 19 10 (19 3 8 3 9 JICA JBIC)
14	14	
	a	a
	b	b 36 18 11 58

(1)

15	15	
	a	a 17
		19
		62
		18
		19
		22
	b	b 18 17
		TA
		TA 10
	a	a 10
		18 18
	b	b

c

c

0

b

b

2006

FD

WebCT

a

a

FD

b

b

18 12

19

c

c

18

19

18

18

12

FD
170
12

121

12

FD

72

18

26

FD

259

16

Web

17

WebCT100

WebCT100

WebCT

WebCT

		18
		700,000
		61 C
		19
19	19	
	a.	a.
		42
		12
	b	b
		18
		19
)
		(
20	20	
	a	a
		PDCA
		8
	b	b
		11

(1)

21

21

a

a

11

19

b

b

18

a

a

b

b

c

c

a

a

b.

b

18 10

c.

c.

21

b

18

22

22

a

a

2

a

b

	a	a 534 510
	b	b Japan, Inc Web Direct Web Direct Web Direct 18 CGS
	a	a 17
	b	b 17
	a	a 464
	b	b
	c	c
23	23	

(2)

--

25	25	
		36 57 21 10,000 9,503 19,503 5 21
a	a	24 46
b	b	
a	a	CCE 11 51 14
b	b	62 10
a	a	18 396

	b zenshi p 2006	Global Cti b INU INU 8 4 10 INU
		19 20 2000 19 30 10
26 2) 3) CCE 1) ¹³ CCE 14 15 21 CCE 21 2)	26 2) 3) 1) a. b. c. 21 CCE 2)	25 a 1) a 18 12 b 21 CCE CCE c. CCE 2) CCE

~

~

d

(20 40)
 (20 25)
 (20 20)
 (30 49)

55

a.

a.

13 14
 16 4
 80

b

b

18

17
 27- a

c

c

(250 FS(18 (50

d

d

17

1,700

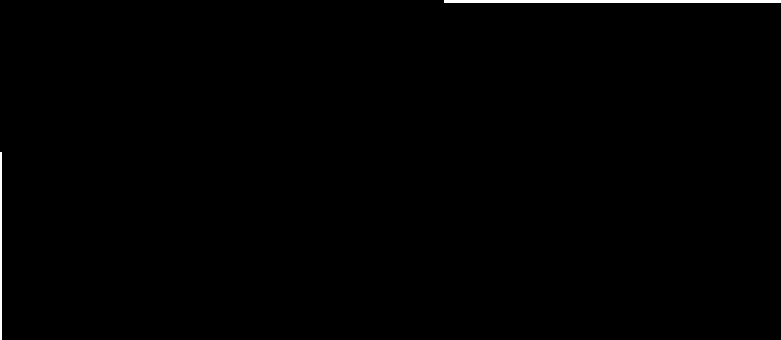
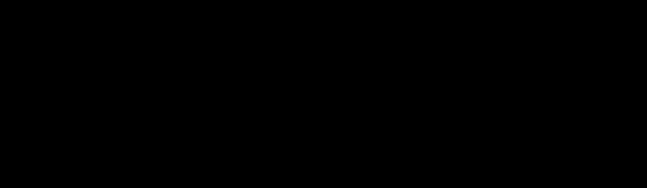
18

) 19 (

19

)

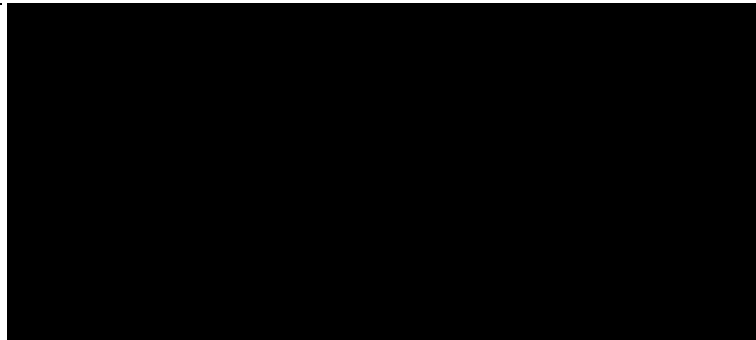
27- b c d



18

18
18

a19



c

(2)

29	29	21 CCE
		21
		19 13
		19 13
	a	a
		19 19
		19

b

b

” 18 ”

19

c

c

” 18

”
10

16

16

21
14 CCE
74/(

7 CCE
1659+

24

0 74
53) x100=4 3%
7

17

20
18 CCE
82/(

9 CCE
1642+

27

1 82
62) x100=5 1%
6

18

22
14 CCE
80/(

11 CCE
1649+

26

1 80
58) x100=4 7%

d

d

18

19 4 1

20

19

19

30	30	
31	31	<p>INET3¹⁹ SINET S</p> <p>18 11 250</p> <p>500 18 4 500</p>
32	32	<p>18 4</p> <p>18 316 219 194</p> <p>31 168 44</p> <p>25</p> <p>a a TLO TLO 11</p> <p>34 TLO TLO TLO TLO</p>

	b	b VBL 14 (18	13 27- a
33	33		
		17	
34	34		27
		15	65
			18 26 NASA JAXA
35	35	CCE	11

			18
		62	396

(3)

36	36	(16 a (27 18 19
	a	a DB DB 18 20
	b	b 18 13 15 20
	c	c

		56		14		18
				258, 299	5, 596	19
						26 16
90		20	919			90

37

37

18

PR

19

(

PR

200

4

a

a

a	a							
b	b					19	10	
a	a	19						
		27	27					
b	b							17
						English+		
						10	18	19
						Provost Dooley SD		
						19	SD INU	Shadowing Program SD
a	a	19					18	
b	b	18						
			18					
c	c	18						
								Peace St
								udies and Peace Discourse in Education

b zenshi p 2006	Global Gti	b	INU	8 4 10	
		U	18	INU	IN
c		c		19	INU
		12	20		
WebCT			1 b		
a.		a			
			18 11 14		
b.		b	18		366
c.		c	17		130 16
			11 1 18		
				19 10	
			10	20	

a.

a.

ACCES

b.

b.

40

40

a

()

a

INU 2007
 1

Provost Dool ey
 SD
 19

10 18
 SD
 INU

English+
 19
 Shadowing Program
 SD

10 23 UNTAR AA

b b 18
2,000

c SIP c 19 FIRST
RI FIRST FIRST SIPRI FIRST

a a 17 12 JICA
18 26

b b 18 25 JBIC
26 JICA INU JICA
8 10
10 JBIC 12 24

c , c 18 10
28

a a 18 JICA JBIC 5 5 3 7

b b 40 b

(3)

--

	16 17	18
		18
		19
		19
41	41	
	a	a
	b	b
		19 19

42

42

19

a

a 19

b

b

a

a 42 a

b

b 42 b

16 17

18

43

43

a

a 18 18 18 12

19

b

b 71 b

c

c 71 a

d

d 18 12 IS09001 25

e	e	ICT	NST
		18	
			19
		ICU	
a	a		20
			19
b	b	18	
			19
		19	

44	44 a	a 18 19
	b	b 19 IS09001
	a	a 19 HMS
	b	b
	c	c
		50 16
	a	a 10 19 17 19

b

b

DPC

(3)

--	--

--	--

45

45

18 18
19 27

46

46

a

a

b

b

m

°

m

	c	c
	d	d
		18 26 259 50-b
		19
47	47	
	a	a
	b	b
		19
		18
	a	a
	b	b 18 11
	c	c
	d	d

48	48	19
49	49 a ----- b ----- c	a ----- b ----- c
50	50 a ----- b ----- c	a ----- b 1 ----- c ----- 18 26 259 46 - c

" I U!4' āQ\$ p G(

\$ VÁce@#t\$æ"óæ'cíáäöaq g Öã Ñ,Á p .p1081488-B'006ÁPMY •Ã•€ QRÝ ÙDP ã\$V ñ æ%~c,=p f P "C' ¼Ý Ò Ú •

19

43 a b

43 a

10

15

50

16

17

19

ISO9001

41

PDCA

41

41

19

44 b

44 a

HMS

19

44 a

[Redacted]

[Redacted]

[Redacted]

[Redacted]

		(18 11. 27 18 112) 15,855,000

[Redacted]

		18 1,311,379,299 174,300,000 898,399,569

[Empty rectangular box]

	839	599		3,228	1,962		3,232	1,966
		0			1,176			1,176
		240			0			0
		0			90			90
(1)								
(2)	17	16						

[Redacted]

	,	(1)
	18	
		(1)
	65	
		(1)
		(1)



	(a)	(b)	(b)/(a) x 100
	520	632	121
	580	641	110
	720	754	104
	352	408	115
	336	370	110
	352	400	113
	220	251	114
(1)	1	1	
(1)	1	1	
(1)	1	1	
	580	649	111
	210	254	120
(1)	1	1	
	620	661	106
	260	289	111
	198(10)	232(4)	117
	268(4)	300(3)	111
	238(2)	276(2)	115
	138(2)	153(3)	110
	98(2)	106(0)	108
(5)	(20)	(12)	(60)
	600	608	101
(2)	180	198	110
	520	545	104
	355	356	100
	80	86	107
	38	40	105
	22	26	118
	420	476	113
	540	626	115
	460	518	112
	540	593	109
	20	136	680
(1)	1	1	

	(a)	(b)	(b)/(a) x 100
	380	461	121
	9, 845	11, 050	112
	60	56	93
	128	111	86
	38	61	160
	10	12	120
	70	95	135
	68	93	136
	50	65	130
	30	31	103
	38	55	144
	10	8	80
	48	42	87
	56	44	78
(3)	20	22	110
	56	69	123
(1)	9	9	
(1)	7	7	
	44	40	90
	60	68	113
	46	63	136
	48	27	56
	20	26	130
	46	51	110
	50	66	132
	48	82	170
	30	64	213
	68	104	152
	82	161	196
	48	85	177
	54	72	133
	72	125	173
	86	162	188

	(a)	(b)	(b)/(a) x 100
	()	()	()
(4)	43	39	90
(4)	51	68	133
	50	35	70
	30	33	110
	24	40	166
	86	105	122
	40	22	55
	86	78	90
	56	53	94
	1, 950	2, 449	125
	20	28	140
	96	105	109
(1)		2	
(1)		3	
(1)		2	
(1)		1	
(1)		1	
	27	33	122
	66	91	137
	54	80	148
	15	17	113
	24	16	66
(3)	10	52	520
	42	59	140
(1)		7	
(1)		8	
	33	16	48
	39	34	87
	33	21	63
	36	30	83
	15	19	126
	33	20	60
	36	24	66
	33	26	78
	21	27	128

	(a)	(b)	(b)/(a) x 100
	()	()	()
	51	108	211
	57	28	49
	33	14	42
	39	18	46
	51	25	49
	63	48	76
(4)	42	39	92
(4)	52	43	82
	39	29	74
	12	9	75
	12	10	83
(1)		3	
(1)		1	
	228	278	121
	184	220	119
	36	29	80
(1)		6	
(1)		8	
(1)		17	
(1)		7	
(1)		3	
	66	53	80
	42	38	90
	1, 640	1, 756	107
	180	157	87
	180	157	87
	30	10	33
	30	10	33

	(a)	(b)	(b)/(a) x 100
	()	()	()
12	480	467	97
18	552	517	93
12	480	460	95
9	360	357	99
9	264	260	98
6	240	250	104
9	360	365	101
15	600	602	100
15	600	622	103
3	90	90	100
5	160	159	99
	4,186	4,149	99

254

47

232

21

18

20¹⁸

18¹⁸

19

18

18³

19

± 15

632

50

73

461

140

18

18
23

69

17

16

52

18

35

59

27

104

44

18

22

74

100

50

- 125 -

18
104%

55%

104

18

18

108 (

9

-