

# HRTEM

HRTEM

HRTEM  
100 nm

3 $\mu$ m 1 $\mu$ m

110 120

1,2,3)

EPMA

HRTEM

2004

4)

110 120

2

HRTEM

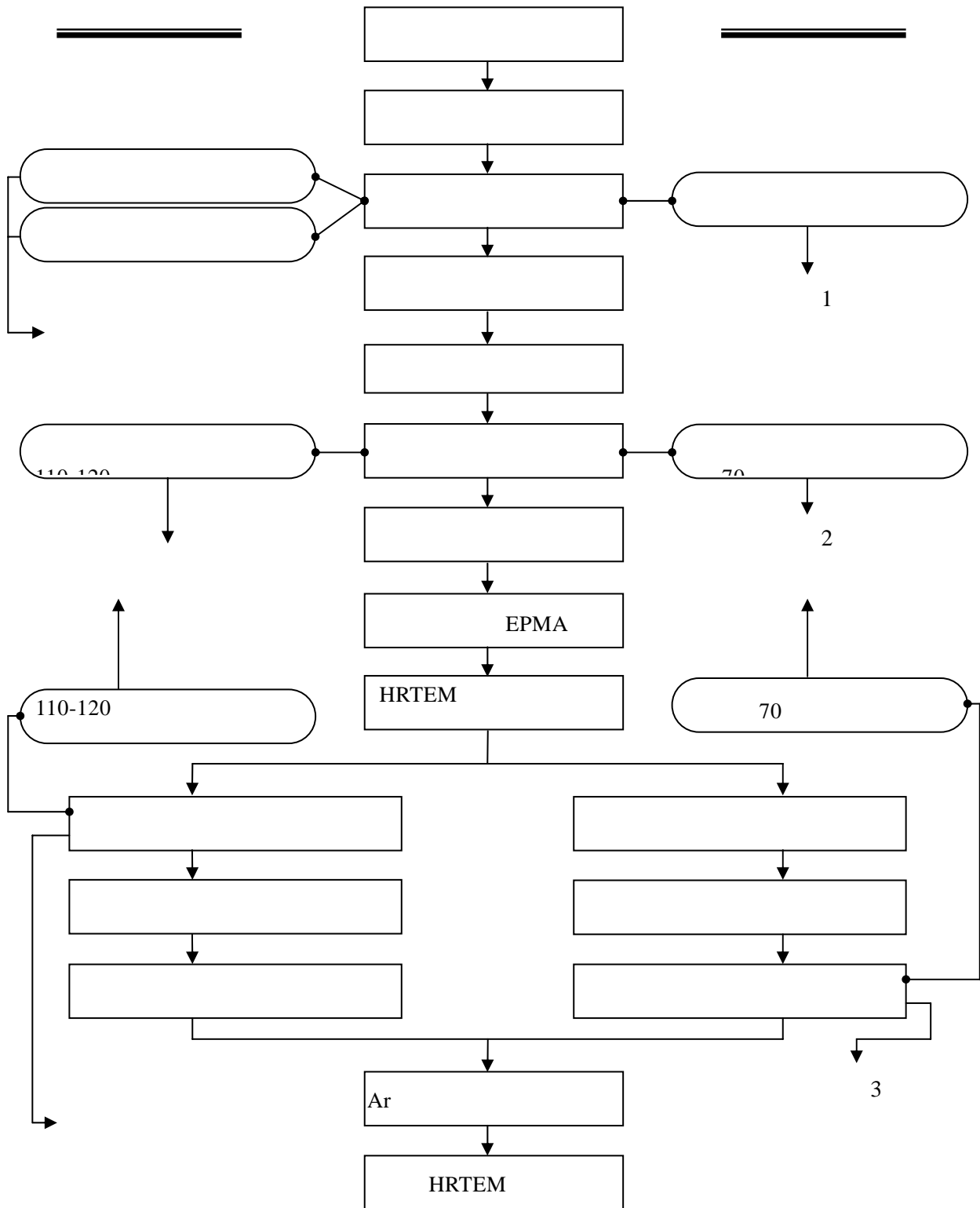
1

HRTEM

415

30

76 40 kg/cm<sup>2</sup>



1 HRTEM

HRTEM

EPMA

1mm

110 120

1 2

70

2

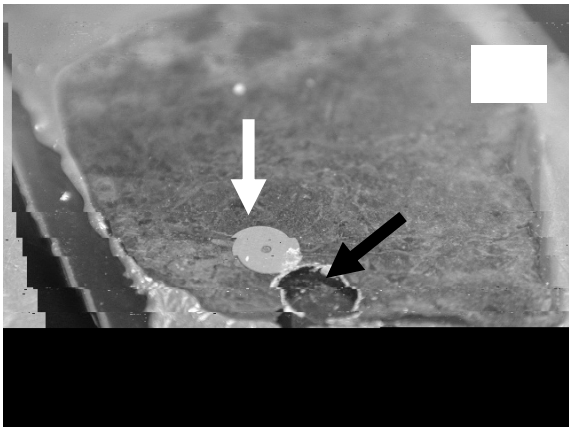
415

70

HRTEM

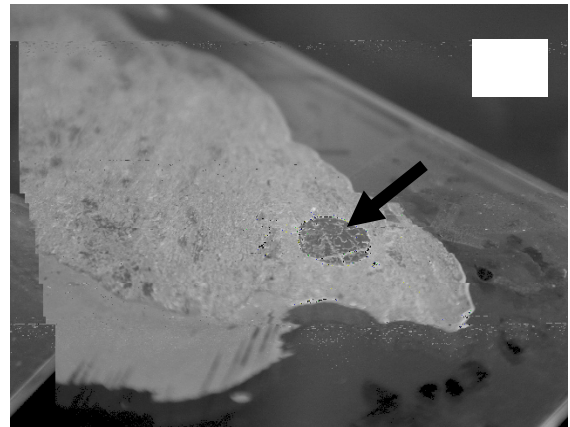
Ar

100



2 a

b



## HRTEM

3

(1)

(2)

(3)

## HRTEM

## EPMA

- 1) Kogure, T. (1996) Investigation of alteration processes of biotite by high resolution electron microscopy. Doctoral thesis, The University of Tokyo, 100p.
- 2) Vicente, M. A., Elsass, F., Molina, E. and Robert, M. (1997) Palaeoweathering in slates from the Iberian Hercynian Massif (Spain): investigation by TEM of clay mineral signature. *Clay Minerals*, **32**, 435–451.
- 3) Amouric, M. and Olives, J. (1998) Transformation mechanisms and interstratification in conversion of smectite to kaolinite: an HRTEM study. *Clays and Clay Minerals*, **46**, 521–527.
- 4) Miyahara, M. and Ishisako, H. (2004) The simple preparation technique of a fragile specimen for HRTEM observation. *Clay Science*, **12**, 271–275