



HiHA

6

Workshop

Hiroshima Research Center for Healthy Aging (HiHA)

:

HIROSHIMA UNIVERSITY

13:25 Opening Remarks

Session 1:

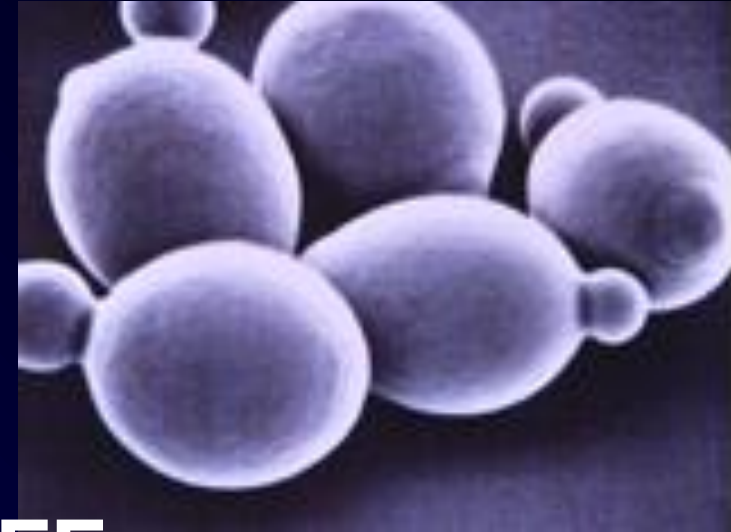
13:30-14:00

14:00-14:30

Kid/Kinesin-10

polar ejection force

ON-OFF



14:30-15:00

--- 15:00-15:20 Break ---

Session 2:

15:20-15:50

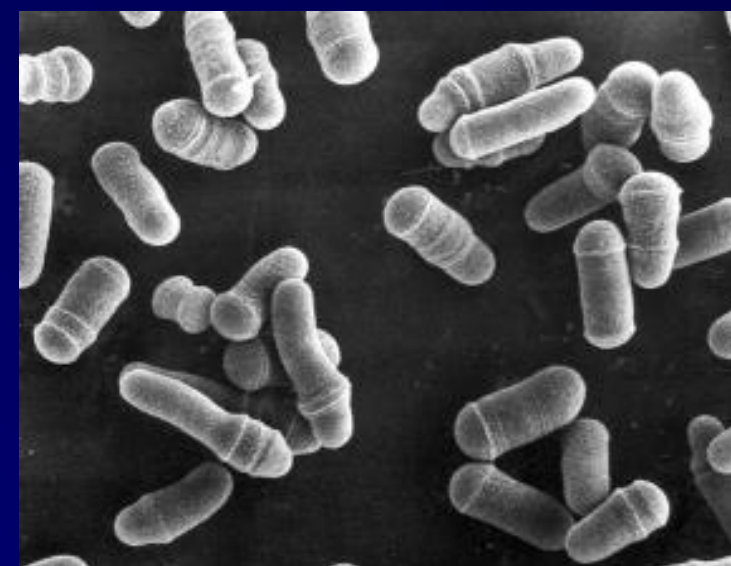
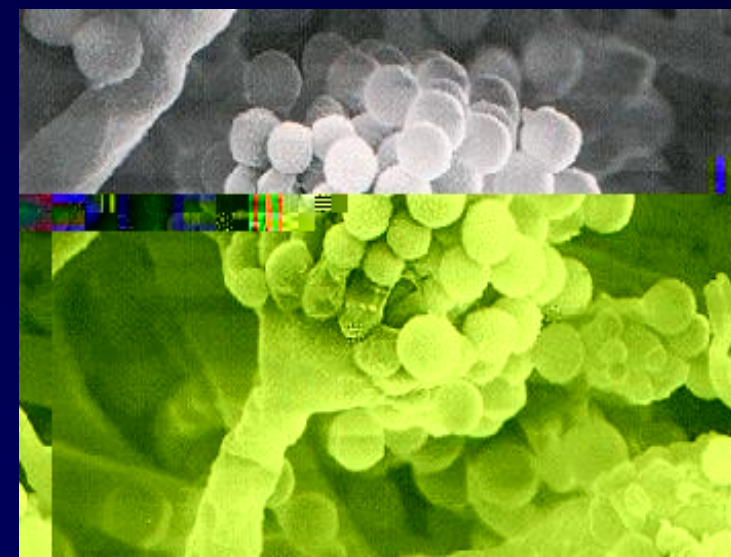
15:50-16:20

PKC/MAPK

--- 16:20-16:40 Break ---

16:40-17:10

17:10-17:40



Closing Remarks

※ Workshop

28

7

8

() 13:25-17:40

4F 401N

○広島大学大学院先端物質科学研究科分子生命機能科学専攻

・広島大学健康長寿研究拠点：河本 正次（代表），事務担当：松本

連絡先：E-mail tomako@hiroshima-u.ac.jp TEL 082-424-7867