

Toward a comprehensive understanding of a global genetic network within a cell

Hiroshima Research Center for Healthy Aging (HiHA)

:

HIROSHIMA UNIVERSITY

15:00-15:30 **Yoshikazu Ohya (The University of Tokyo)**

chair: Seiji Kawamoto

High-dimensional and-single cell phenotyping in
Saccharomyces cerevisiae

15:30-16:00 **Hisao Moriya (Okayama University)**

chair: Masaki Mizunuma

Consequences of protein overexpression approach
by genetic tug-of-war method

16:00-16:15 **Sheena Li (Riken Institute)**

chair: Masaru Ueno

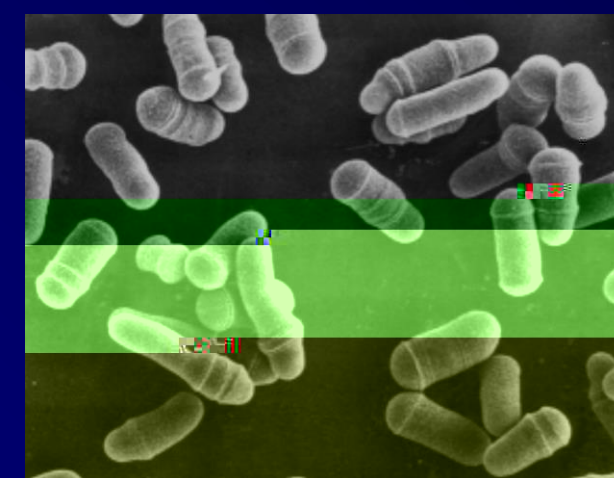
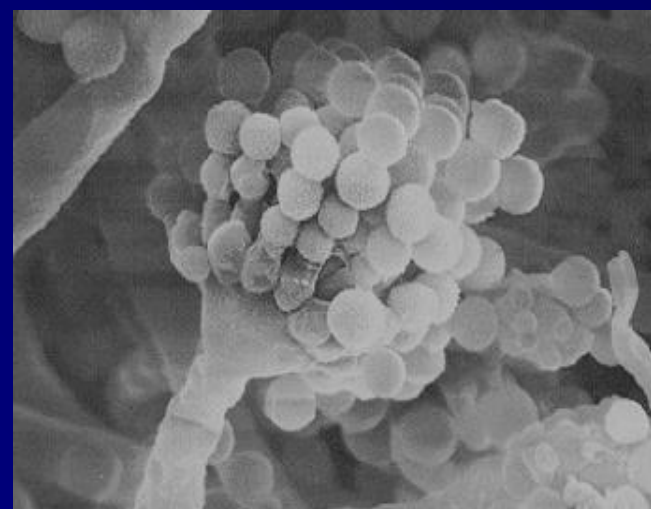
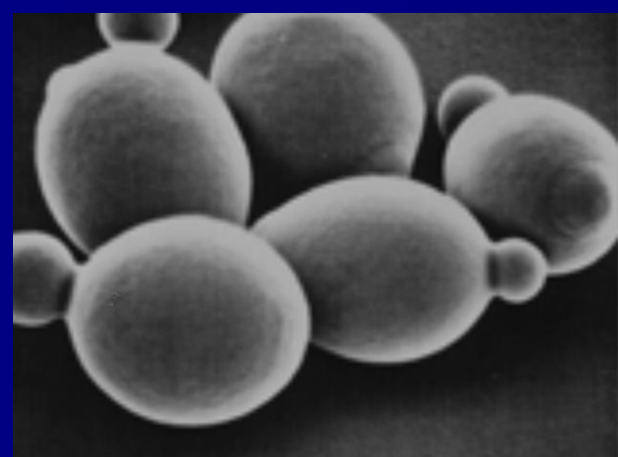
Target identification of compounds using an integrated
chemical genetic approach

===16:15-16:30 break===

16:30-17:30 **Charlie Boone (University of Toronto)**

chair: Takashi Toda

A global genetic interaction network maps a wiring diagram
of cellular function



_____ 29 1 13 () 15:00-17:30
_____ 3F 302S