

【本件リリース先】
文部科学記者会、科学記者会、
広島大学関係報道機関



広島大学

NEWS RELEASE

7 2 4

IL-6

IL-6

Atezo+Bev 2

IL-6

3 Atezo+Bev

Atezo+Bev

Atezo+Bev

Atezo+Bev

IL-6 Atezo+Bev

Atezo+Bev

4

Atezo+Bev

5

IL-6

Atezo+Bev

Atezo+Bev

IHI

IL-6

6

CD8

T

7

IL-6

TME

Atezo+Bev

IL-6

2024

Journal of Gastroenterology

Serum IL 6 concentration is a useful biomarker to predict the efficacy of atezolizumab plus bevacizumab in patients with hepatocellular carcinoma

Ryoichi Miura¹ Atsushi Ono¹ Hikaru Nakahara¹ Yuki Shirane¹
Kenji Yamaoka¹ Yasutoshi Fujii² Shinsuke Uchikawa¹ Hatsue Fujino¹
Eisuke Murakami¹ Tomokazu Kawaoka¹ Daiki Miki¹ Masataka Tsuge¹
³ Takeshi Kishi⁴ Waka Ohishi⁵ Naoya Sakamoto⁶ Koji Arihiro⁷ Clair
Nelson Hayes¹ Shiro Oka¹

1. Department of Gastroenterology, Graduate School of Biomedical and Health Sciences, Hiroshima University Hospital, Hiroshima, 734-8551, Japan.

2. Department of Clinical Oncology, Graduate School of Biomedical and Health Sciences, Hiroshima University, Hiroshima, Japan.

3. Liver Center, Hiroshima University, Hiroshima, 734-8551, Japan.

4. Biosample Research Center, Radiation Effects Research Foundation, Hiroshima, Japan.

5. Department of Clinical Studies, Radiation Effects Research Foundation, Hiroshima, Japan.

6. Department of Pathology and Clinical Laboratories, National Cancer Center-Hospital East, Kashiwa, Chiba, Japan.

7. Department of Anatomical Pathology, Hiroshima University Hospital, Hiroshima, Japan.

Journal of Gastroenterology Q1

DOI 10.1007/s00535-024-02185-w

8

Atezo+Bev

Atezo+Bev

Atezo+Bev

Atezo+Bev

IL-6 Atezo Bev

6

9

10

IL-

Atezo+Bev

IL-6

Atezo+Bev

IL-6

TME

Atezo+Bev

IHC

TME

IL-6

CD8 T

IL-6

Atezo+Bev

IL-6

1 IL-6

-6

2

8

Atezo+Bev

Atezo

Atezo+Bev

Bev

3

4

5

6

T

7 CD8

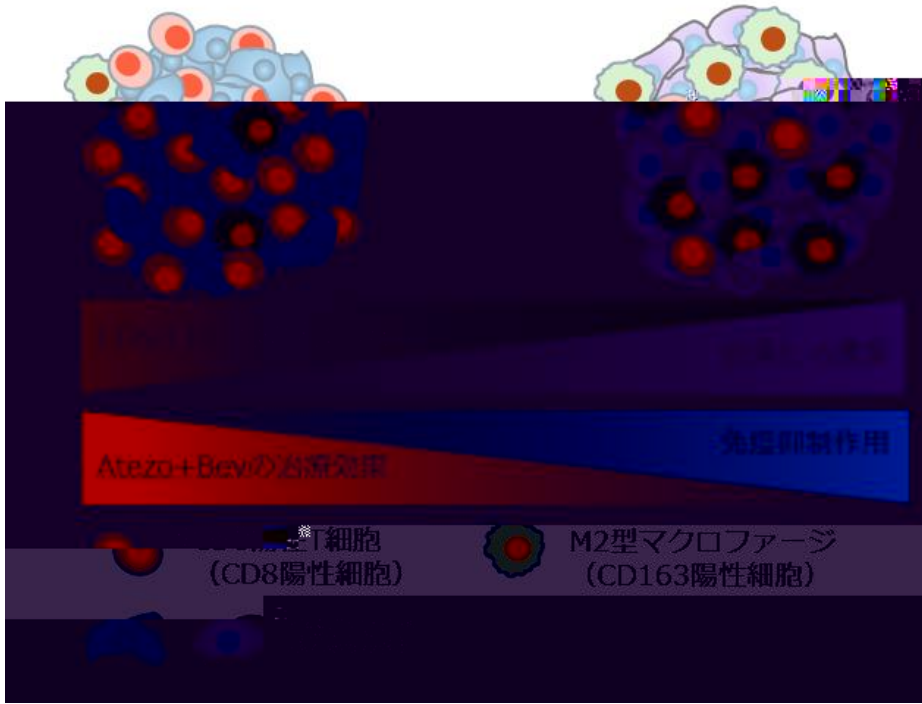
T

T

8

9

10



1

IL-6

CD163

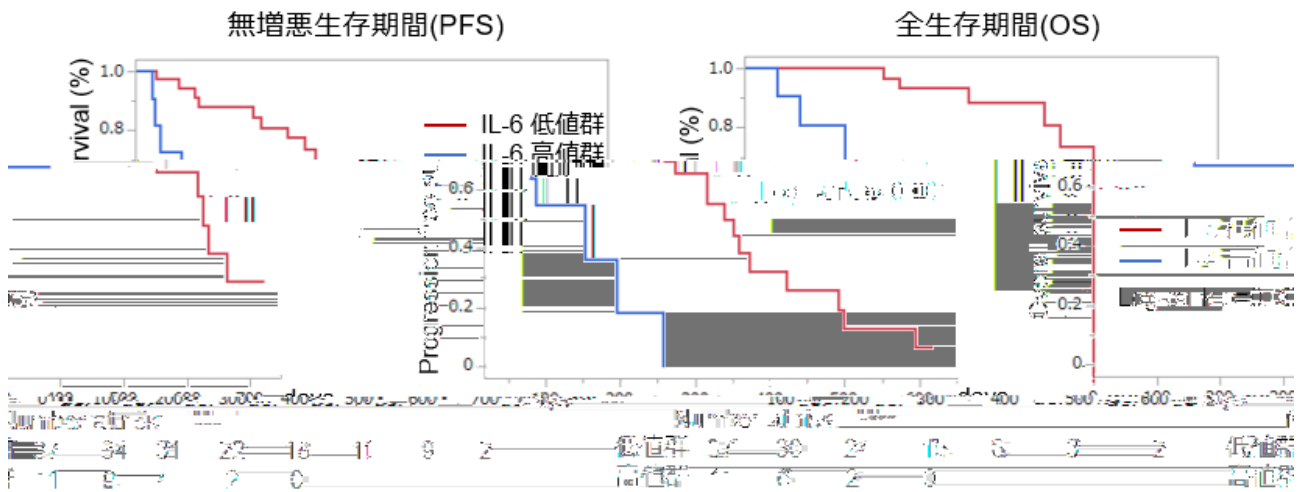
CD8

T

CD8

M2

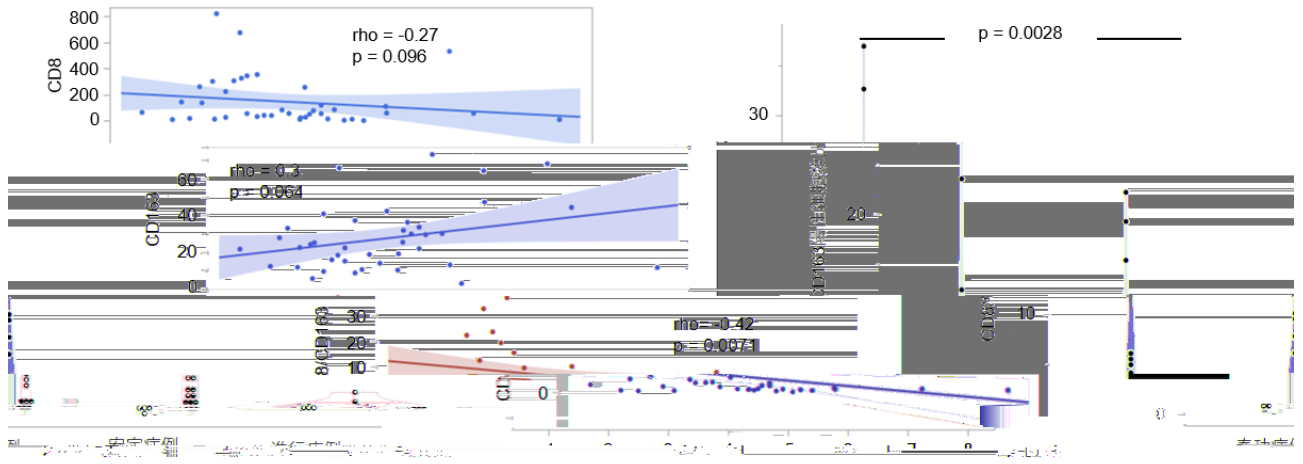
Atezo Bev



2 Atezo+Bev

IL-6

IL-6



血清 IL-6 (log2; pg/mL)

3 IL-6 CD8 CD163

IL-6 CD8 T

CD8/CD163 M2 ()

CR/PR

PD CD8/CD163

Tel 082-257-5191 FAX 082-257-5194
 E-mail atsushi-o@hiroshima-u.ac.jp