



1





Fig. 3 (10)

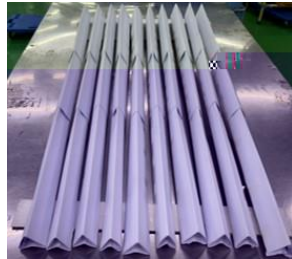


Fig. 4 1(11)

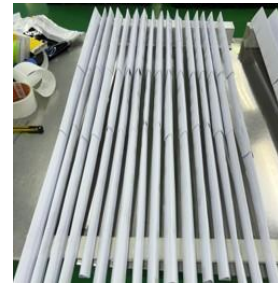


Fig. 5 2(16)

Table 1

形状	収集製品本数	分離率(収集本数/総成型本数)
①円柱型	130	77.4(%)
②三角柱型1	142	84.5(%)
③三角柱型2	135	80.1(%)

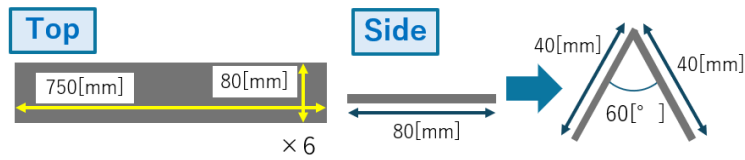


Fig. 6

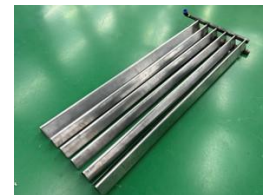


Fig. 7 (1)

Table 2

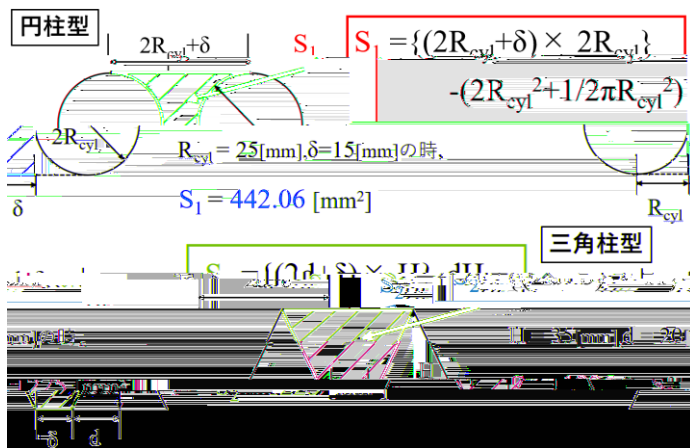


Fig. 8

Table 3

--

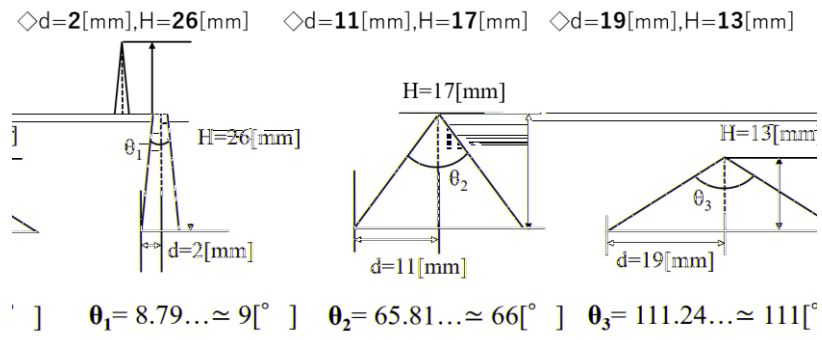


Fig. 9 3

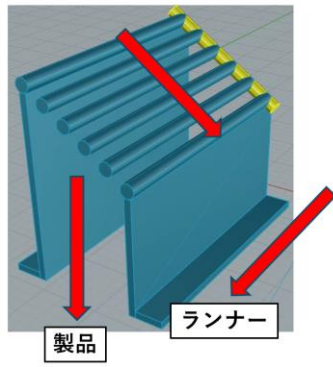


Fig.10

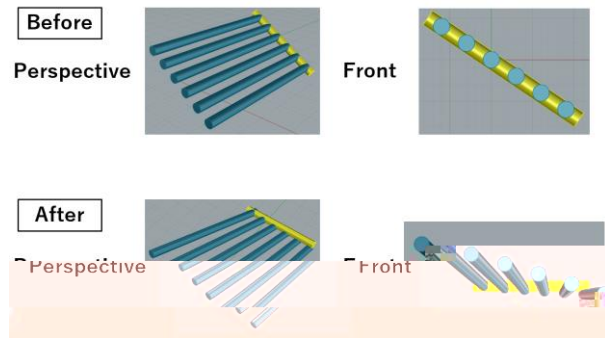


Fig.11

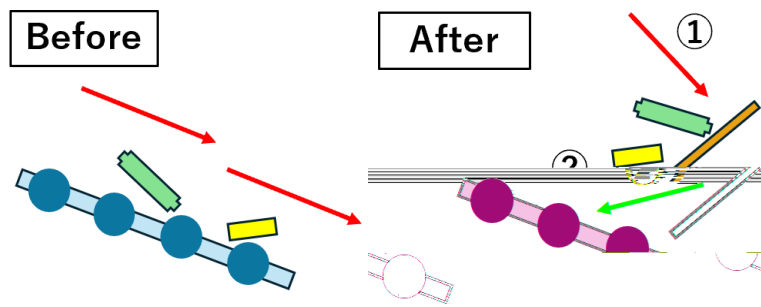


Fig.12

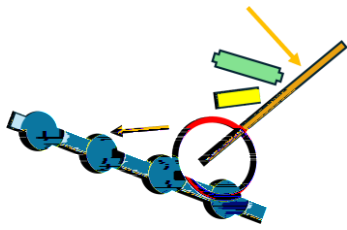


Fig. 13(a)

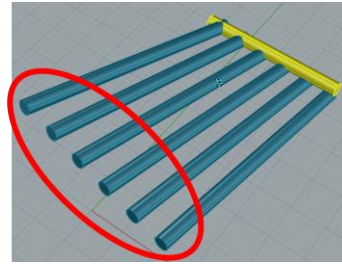


Fig. 13(b)

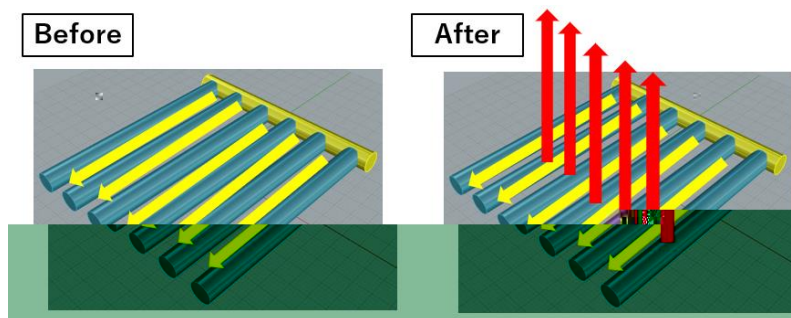


Fig.14

()

