

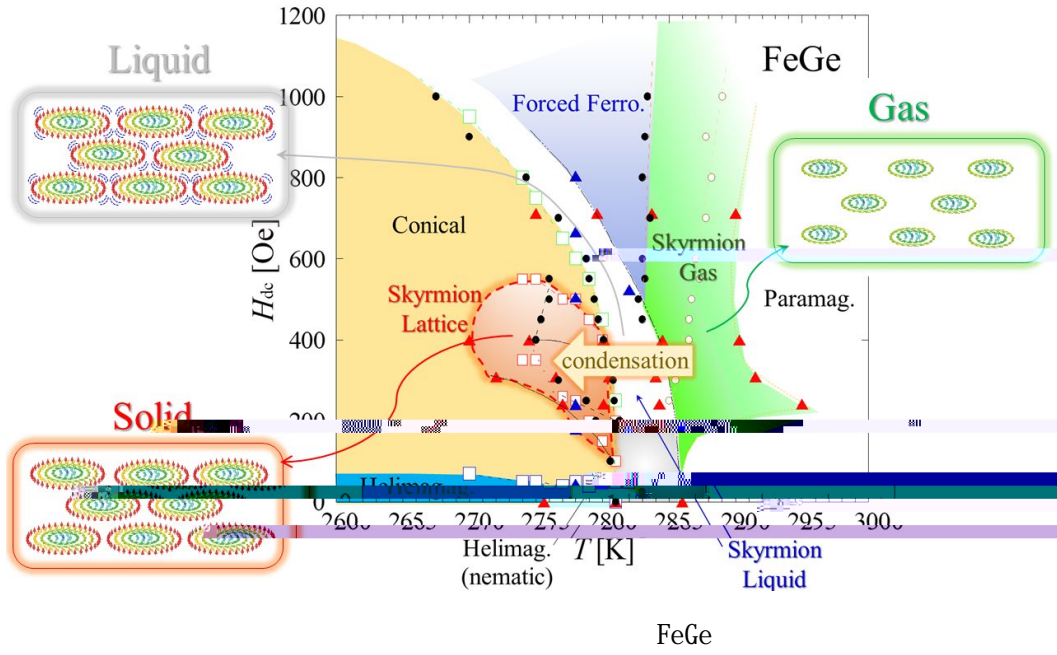
NEWS RELEASE

2024 9 24

*1

ポイント

*2



*1

*2

Magnetostriction Related to Skyrmion-Lattice Formation in Chiral Magnet FeGe
Masaki Mito, Takayuki Tajiri, Yusuke Kousaka, Marina Miyagawa, Tamami Koyama,
Jun Akimitsu, and Katsuya Inoue

Journal of Applied Physics

10.1063/5.0227382

JSPS

(Core-to-Core) A.

