

Transfer of Support to the Program for Developing and Supporting the Next- Generation of Innovative Researchers at Hiroshima University(NEW SPRING)

Global Career Design Center
April 15, 2024



About the system to be transitioned

With Hiroshima University being selected as an implementing institution for the new "Support for Pioneering Research Initiated by the Next Generation" of the Japan Science and Technology Agency (JST), students already employed as fellows under the following program will automatically be transferred to support under the "the Program for Developing and Supporting the Next-Generation of Innovative Researchers at Hiroshima University (NEW SPRING)".

System to move to support in the NEW SPRING

Hiroshima University Graduate School Research Fellowship

The Program for Developing and Supporting the Next-Generation of Innovative Researchers at Hiroshima University(OLD SPRING Adopted by FY2023)

STEM Female Research Fellowship

Changes in Support Details

	Research Fellowship	OLD SPRING	STEM Female Research Fellowship	NEW SPRING
Research Dedication Support Fund Monthly	150,000yen	150,000yen	150,000yen	190,000yen
Research expenses (maximum annual amount)				

Changes in Fellow Obligations

Research Fellowship	OLD SPRING	STEM Female Research Fellowship
1. Develop a yearly research plan for each academic year and concentrate on research activities based on the plan.		
2. Report the progress of research activities to the University regularly.		
3. Cooperate in various surveys.		
4. Participate in programs offered by the University related to improving research capabilities.		
(only available in Japanese), make sure to undertake necessary research ethics education.		
Have regular meetings with mentors.	Actively participate in the initiatives, activities, etc. carried out by the	



NEW SPRING

Obligations 1-5 above

*

"HIRAKU-PF" for career development of the Next-Generation Fellows. In particular, to participate actively in the "HU SPRING 100 Thesis" and the "HIRAKU 3MT Competition".

Register the account for the Cooperative Education through Research Internships is essential.

HU SPRING*

Career development support content will be provided at HU SPRING, a place of emergence for students to interact and collaborate beyond their own areas of expertise.

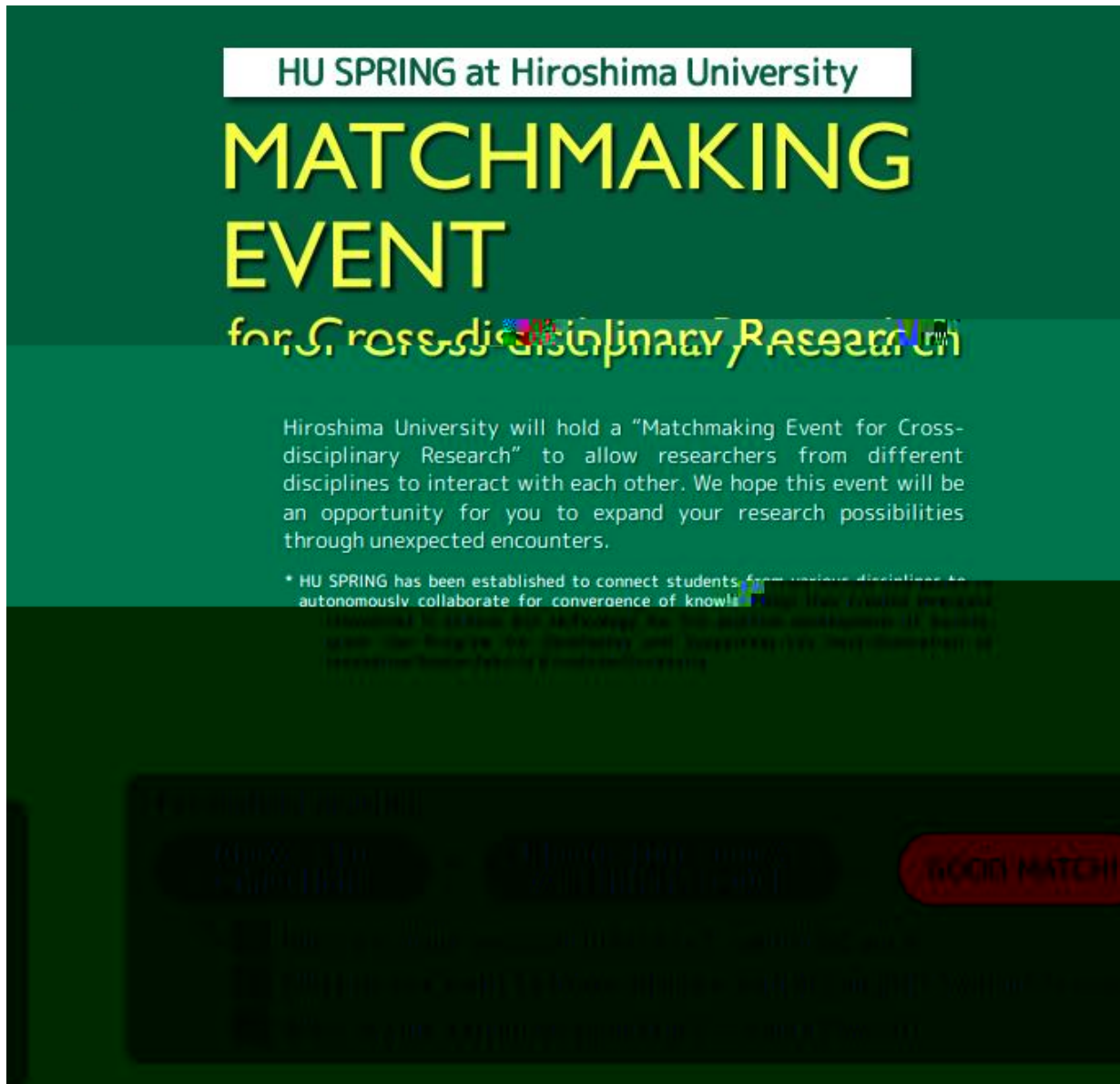
Networking

Seminars and Workshops

More information will be provided during the new fellow orientation, which will be announced in June.

The following slides show some contents.

HU SPRING at Hiroshima University MATCHMAKING EVENT for Cross-disciplinary Research



The poster features a dark green background with a white box at the top containing the text "HU SPRING at Hiroshima University". Below this, the words "MATCHMAKING" and "EVENT" are written in large, bold, yellow letters. Underneath, "for Cross-disciplinary Research" is written in a smaller, white, stylized font. A paragraph of white text describes the event's purpose: "Hiroshima University will hold a 'Matchmaking Event for Cross-disciplinary Research' to allow researchers from different disciplines to interact with each other. We hope this event will be an opportunity for you to expand your research possibilities through unexpected encounters." A small asterisked note follows: "* HU SPRING has been established to connect students from various disciplines to autonomously collaborate for convergence of knowledge." The bottom of the poster is dark with a red button that says "GOOD MATCH!!" in white.

HU SPRING at Hiroshima University

MATCHMAKING EVENT

for Cross-disciplinary Research

Hiroshima University will hold a "Matchmaking Event for Cross-disciplinary Research" to allow researchers from different disciplines to interact with each other. We hope this event will be an opportunity for you to expand your research possibilities through unexpected encounters.

* HU SPRING has been established to connect students from various disciplines to autonomously collaborate for convergence of knowledge.

GOOD MATCH!!

◆

◆

→



GOAL!!!
Boron (B) is necessary for plant



B crosslinks cell wall
RG-II



OUTCOME!!!
WT (No mutation)
RG-II



Unchanged B requirement

Reduced B requirement

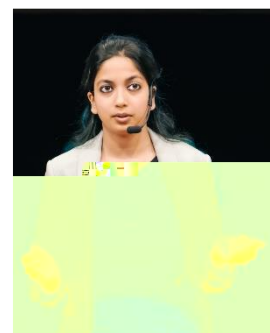
Novel strategy for low B control??

Low B



未来博士3分間コンペティション

HIRAKU 3 MT COMPETITION



Coop-J Internship Membership Registration

Membership Registration Link/QR Code:

<https://2022ss-lgbr.coopj-intern.com/create-member>



What's Coop-J Internship?

Coop-J Internship (Cooperative Education through Research Internship) is a paid long-term research internship programme promoted by MEXT, which allows students to gain experience in research and development at leading Japanese companies and other organizations through a research internship of over one month. Applications can be submitted on 1 May 2024. Coop-J Internship will also be introduced during the online information session hosted by the Global Career Design Centre on 25 April 2024.

To register the above Online Information Session on 25 April, please access the below MS Forms:

<https://forms.office.com/r/PDfZ4aFvhP>

Internship Job Posting Companies (as of April 2024)

JX Metals / Cyber Agent / SHIONOGI / Asahi / HITACHI / Sumitomo Chemical / OKI / INPEX, et.al. (About 30 companies/institutions are joining the program as hosts.)

Tuition Fee Exemption for **Research Fellowship students**

Tuition fee exemption as part of the fellowship program will no longer be available. However, **Research Fellowship students will receive the increased stipends and research fund.(580,000Yen per year) In addition, Research Fellowship students may also apply for Tuition fee exemption if you wish.**

The Tuition fee exemption application period for current students has ended, but a **special application schedule will be set up for Research Fellowship students who are transitioning to the NEW SPRING.**

(This application is for Tuition fee exemption for the first semester of 2024 only. Please check the Economical support page of "Momiji" (Hiroshima University Student Information) carefully, as you will need to apply every semester if you wish to apply for the second semester of 2024 or later, and the application schedule will be the regular application schedule.)

Tuition fee exemption application the first semester of 2024 for **Research Fellowship students** Transitioning to the NEW SPRING

Special Application Schedule

Monday, April 22, 2024 through Wednesday, May 8, 2024
Weekdays from 8:30 a.m. to 5:15 p.m.

Application Methods

Please bring the following application documents to the tuition fee exemption counter () and state that you are applying for a tuition fee exemption due to the transition to the NEW SPRING.
(Tuition fee exemption application counter)
Higashi-Hiroshima Campus students: Student Services Group (Student Plaza 3F)
Kasumi Campus students: Student Support Group, Kasumi Campus Management Support Office.

Application forms

Refer to the Economical support page of "Momiji"
https://momiji.hiroshima-u.ac.jp/momiji-top/en/life/enrollment_fee_exemptiondeferment_and_tuition_fee_exemption.html

Inquiries

Inquiries on the Fellowship Program

Global Career Design Center

Mail fellowship@office.hiroshima-u.ac.jp

Inquiries on the STEM Female Research Fellowship

Research Promotion Group

Mail ura-women@office.hiroshima-u.ac.jp

Inquiries on the Tuition Fee Exemption for Hiroshima University

Student Services Group

Mail gkeizai-group@office.hiroshima-u.ac.jp