



広島大学



国立病院機構
呉医療センター

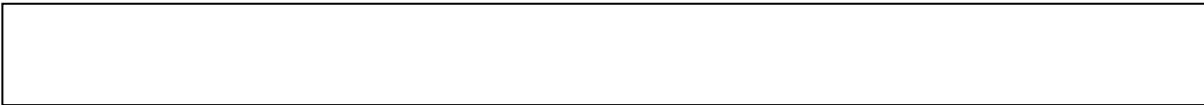


関西医科大学
KANSAI MEDICAL UNIVERSITY

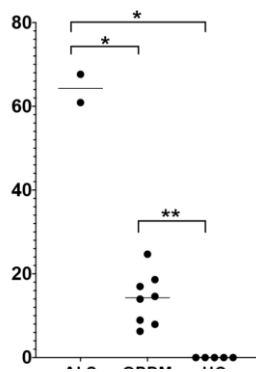
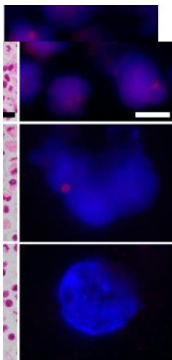


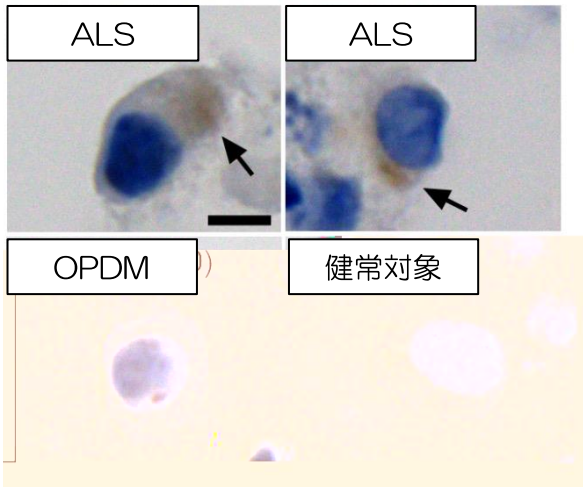
東北大学
TOHOKU UNIVERSITY

NEWS RELEASE



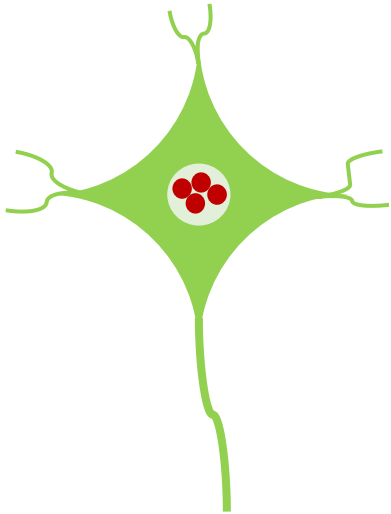
C





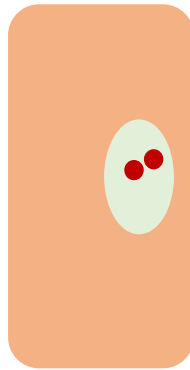
L

61-100 リピート

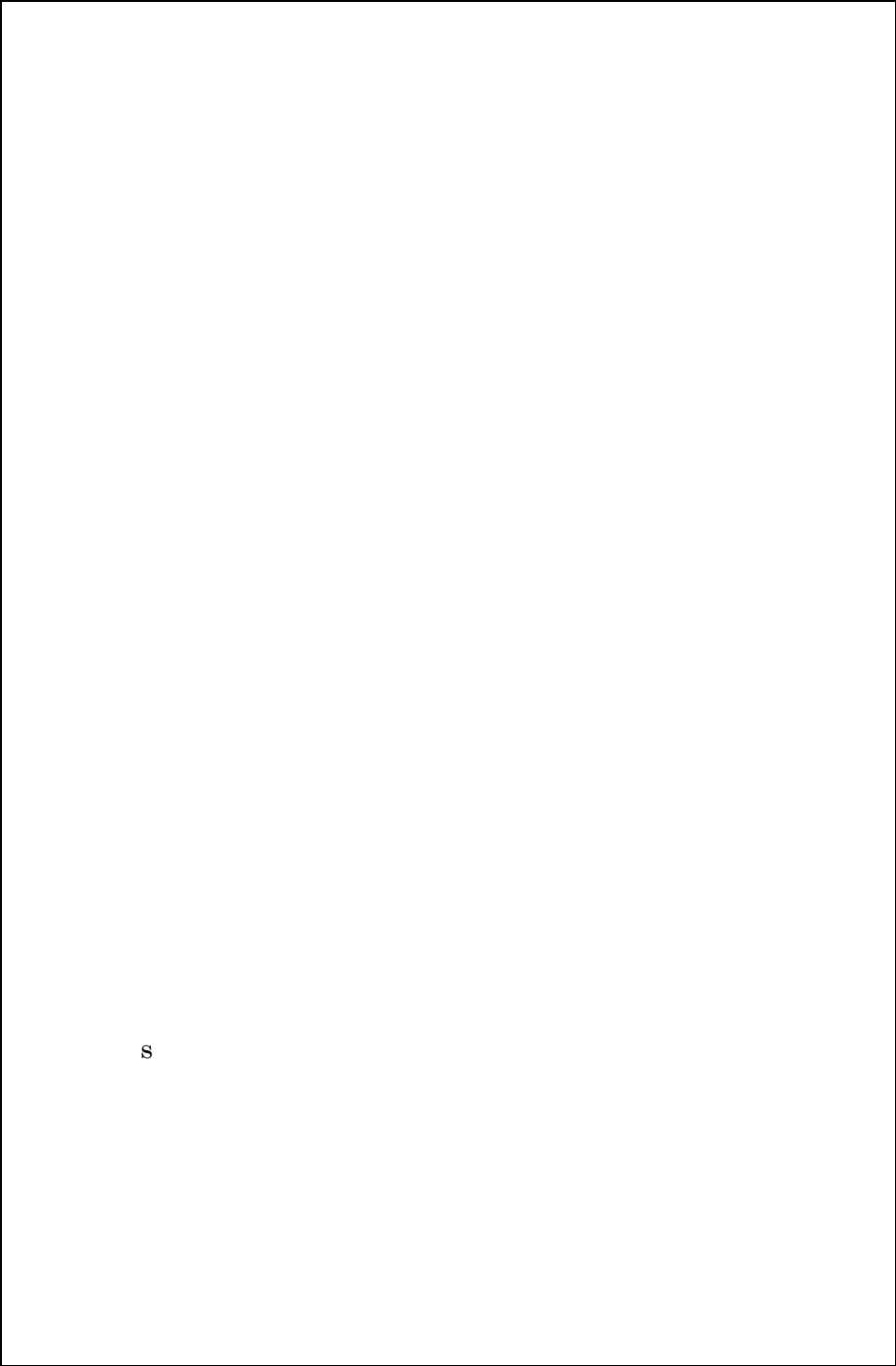


筋萎縮性側索硬化症

>100 リピート



眼咽頭遠位型ミオパチー



8

