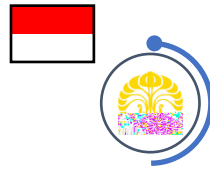


Decoding the Myths of working in Japan

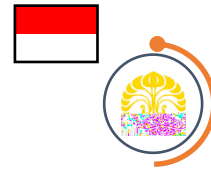


Presented by :
Sumarsono Sudarto

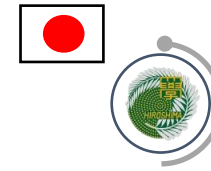
Dr. Eng. Sumarsono Sudarto, S.T., M.T., OCP



Universitas Indonesia
Bachelor's degree
2005 – 2009



Universitas Indonesia
Master's degree
2009 – 2011



Hiroshima University
Doctor of Engineering - PhD
2013 – 2016

- Work Experience -



Agenda

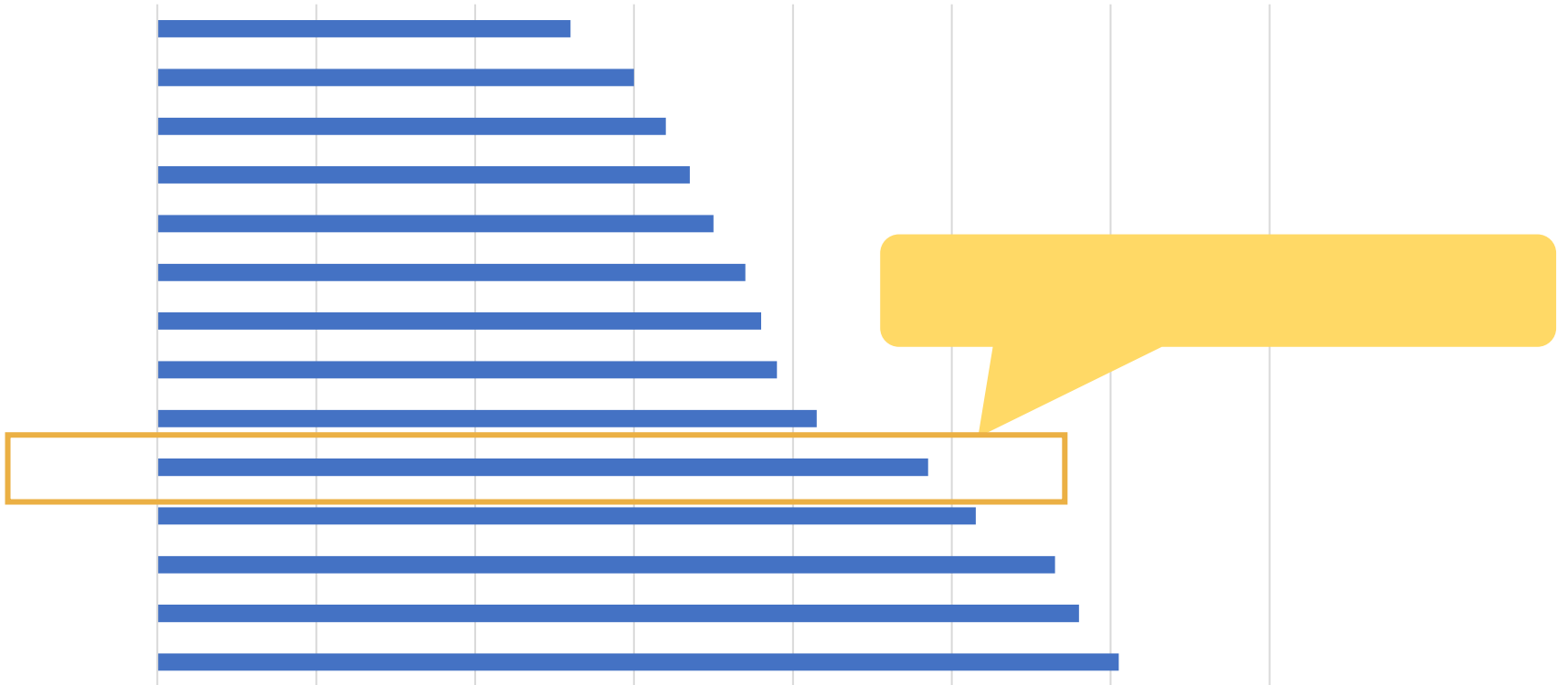




QnA Session



1. Working culture



QnA Session



ion

QnA Session



QnA Session





QnA Session







QnA Session





QnA Session

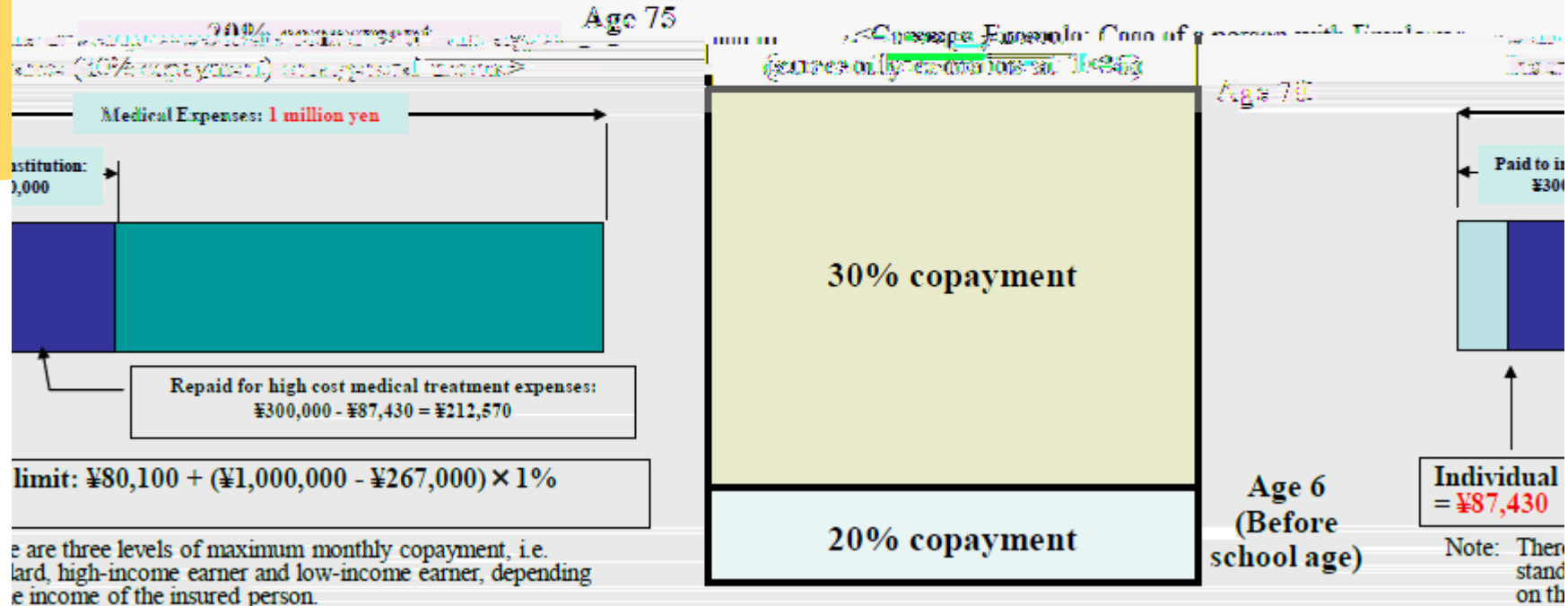


[Basic and patients' copayment for medical expenditure]



UI: Copayment

A system that any amount that exceeds the fixed monthly limit will be paid in order to ensure that the financial burden on the patient does not become too great.



There are three levels of maximum monthly copayment, i.e. standard, high-income earner and low-income earner, depending on the income of the insured person.



QnA Session





QnA Session



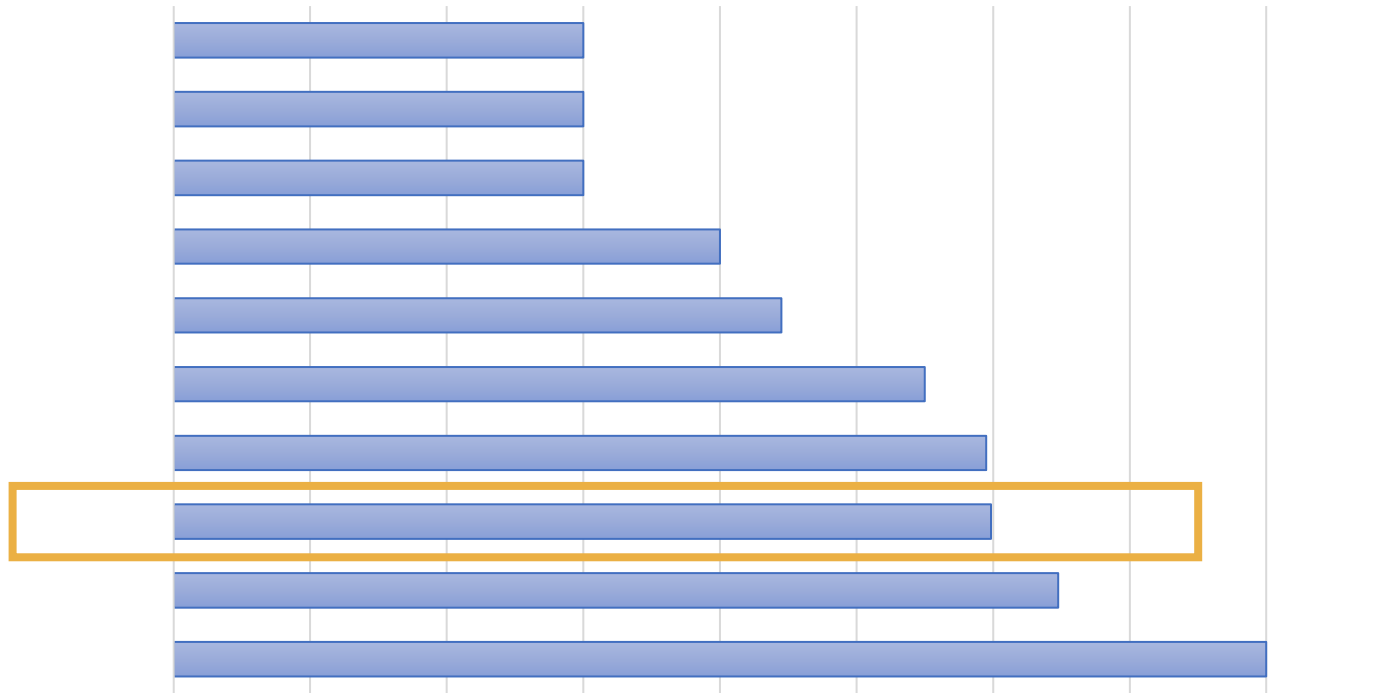
d ftd rr st st ddr st d rst d

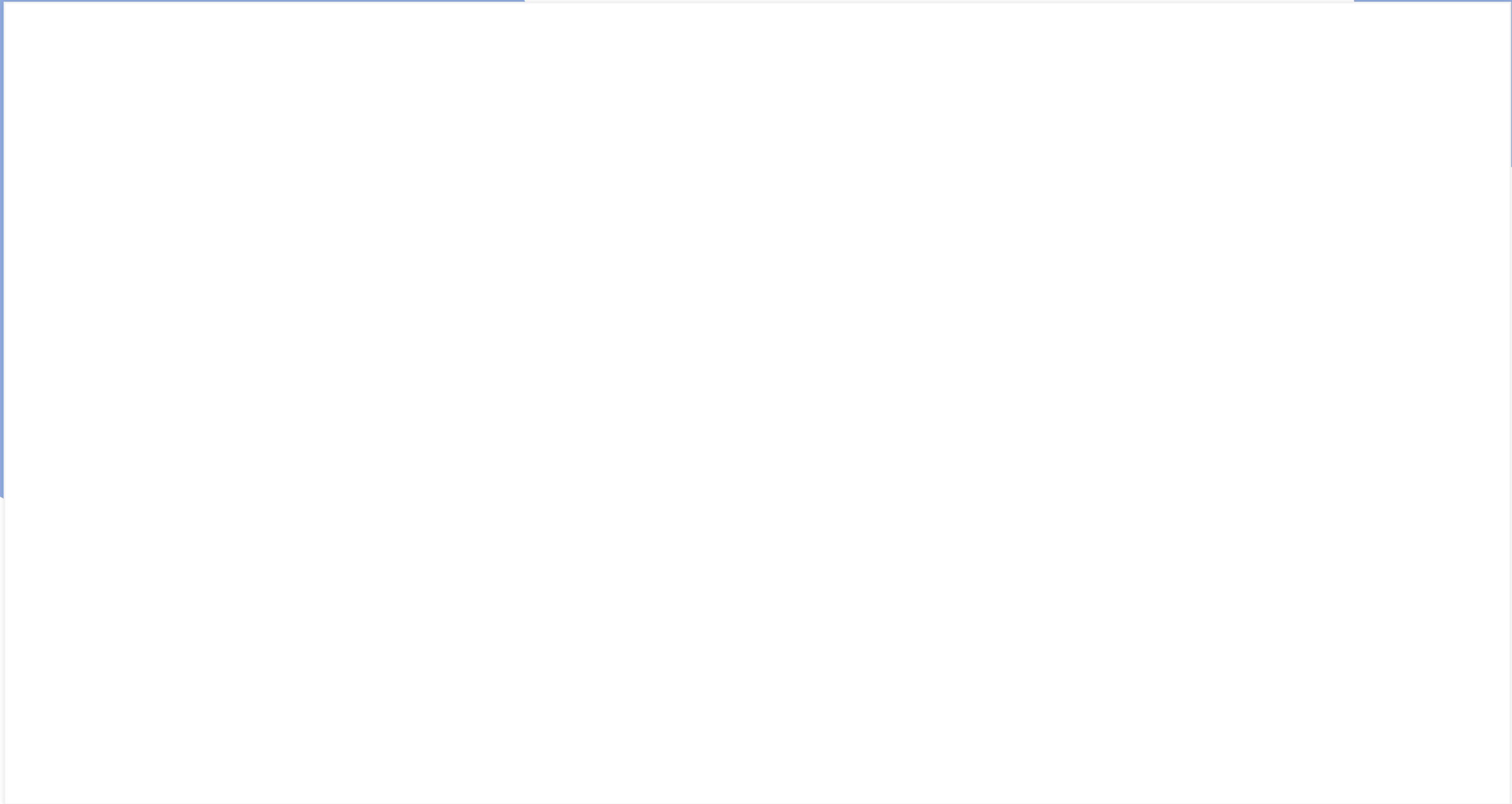
				(
)



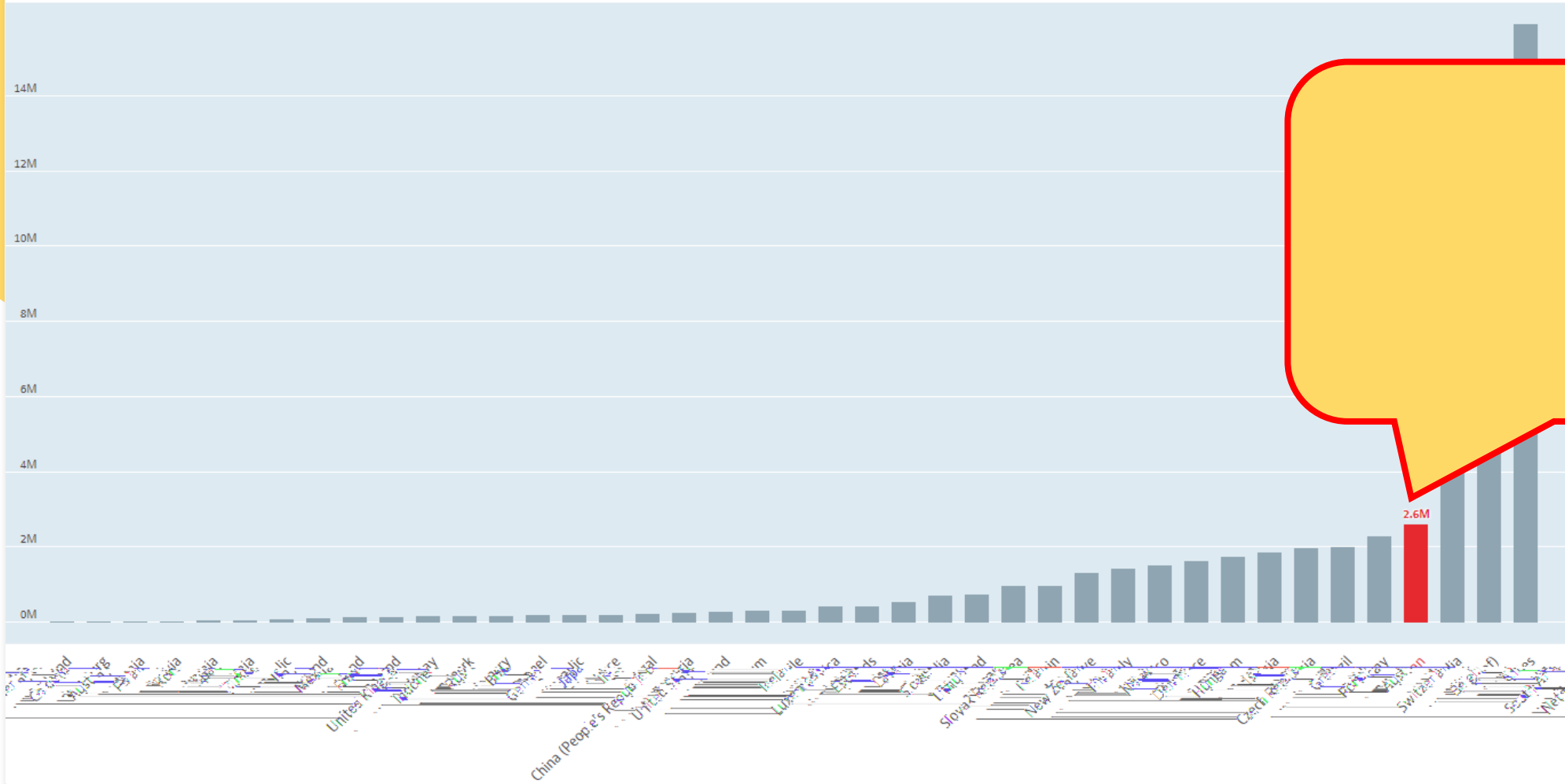


QnA Session

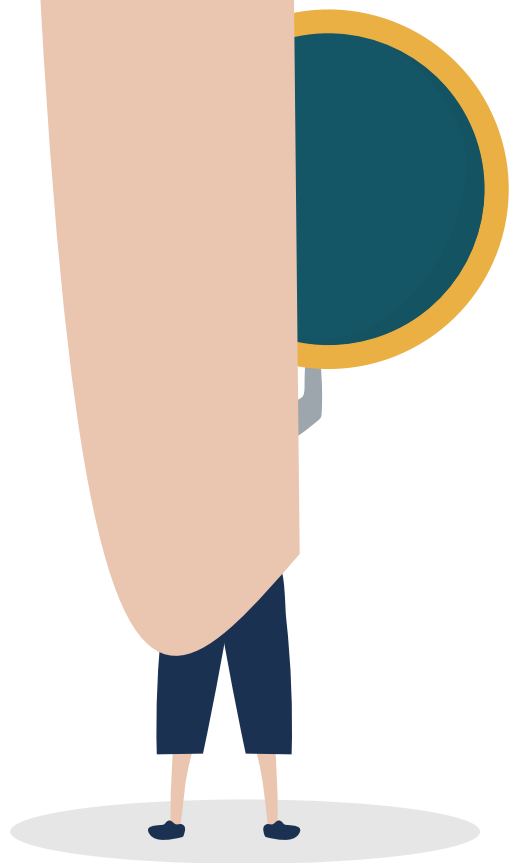


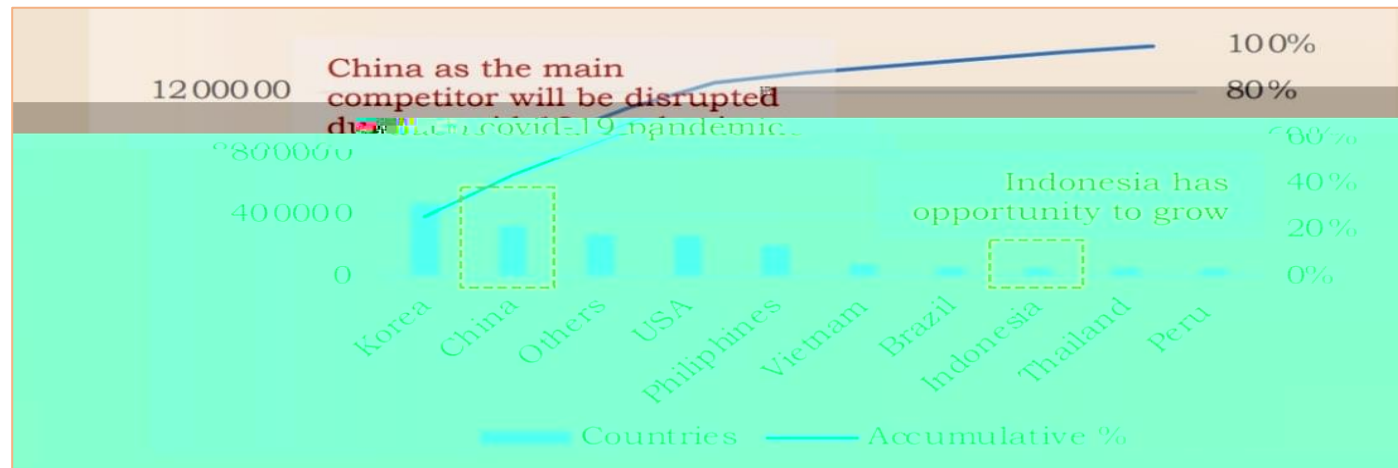
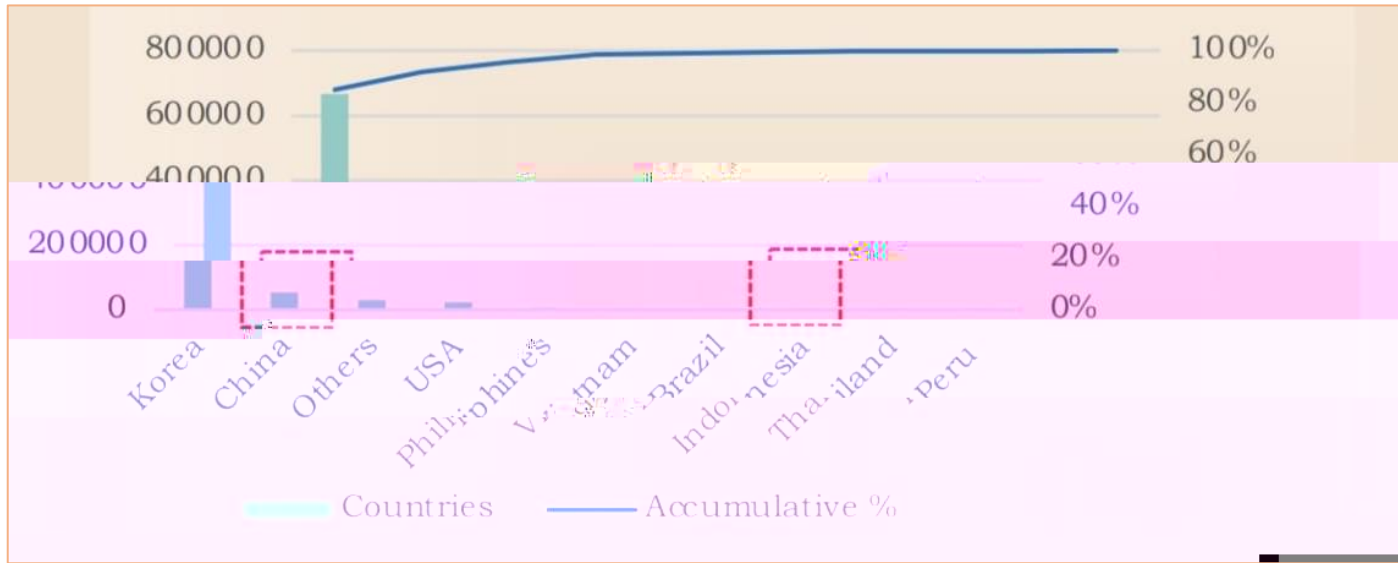


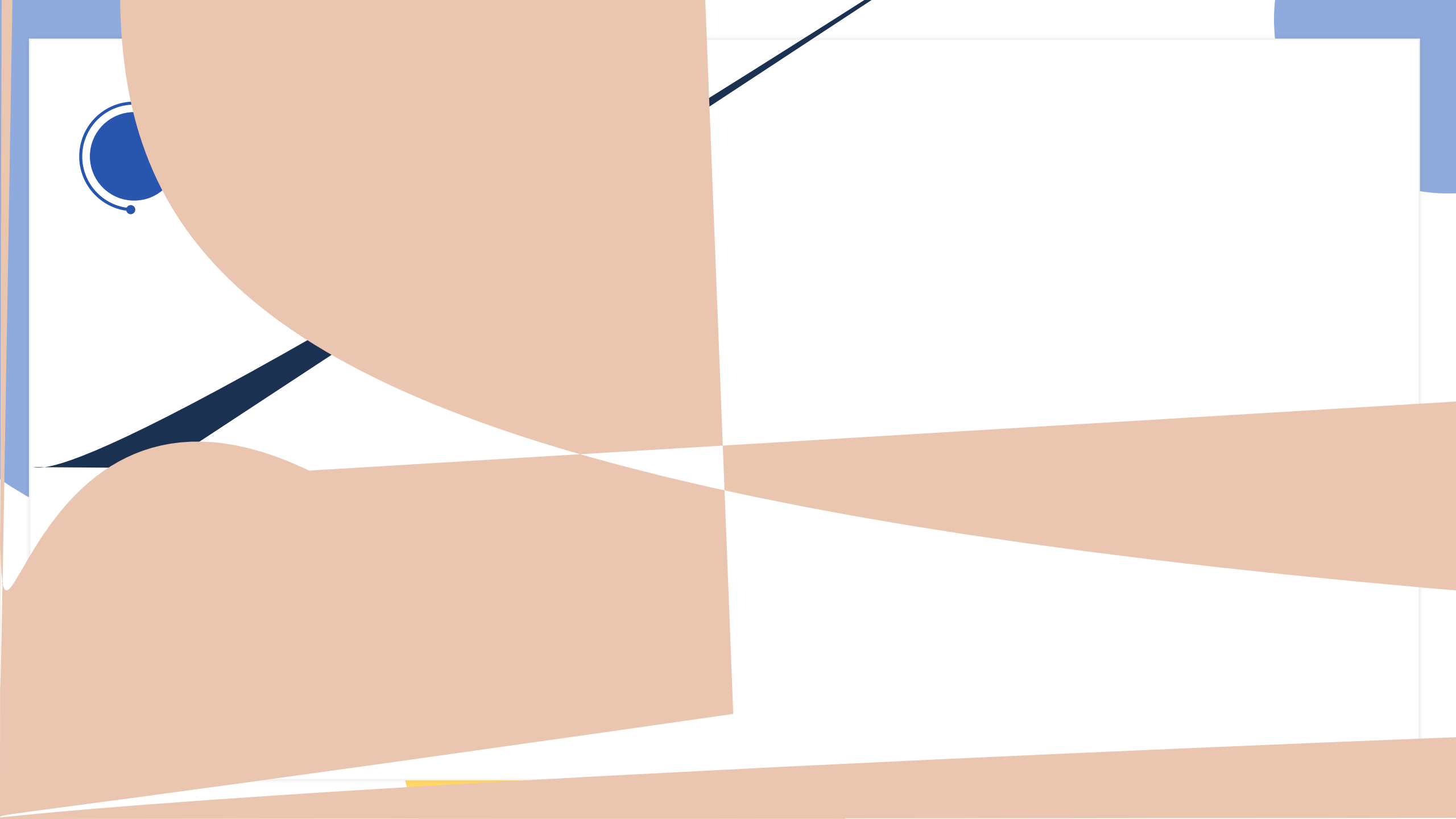
Household spending Total, Million US dollars, 2021 or latest available

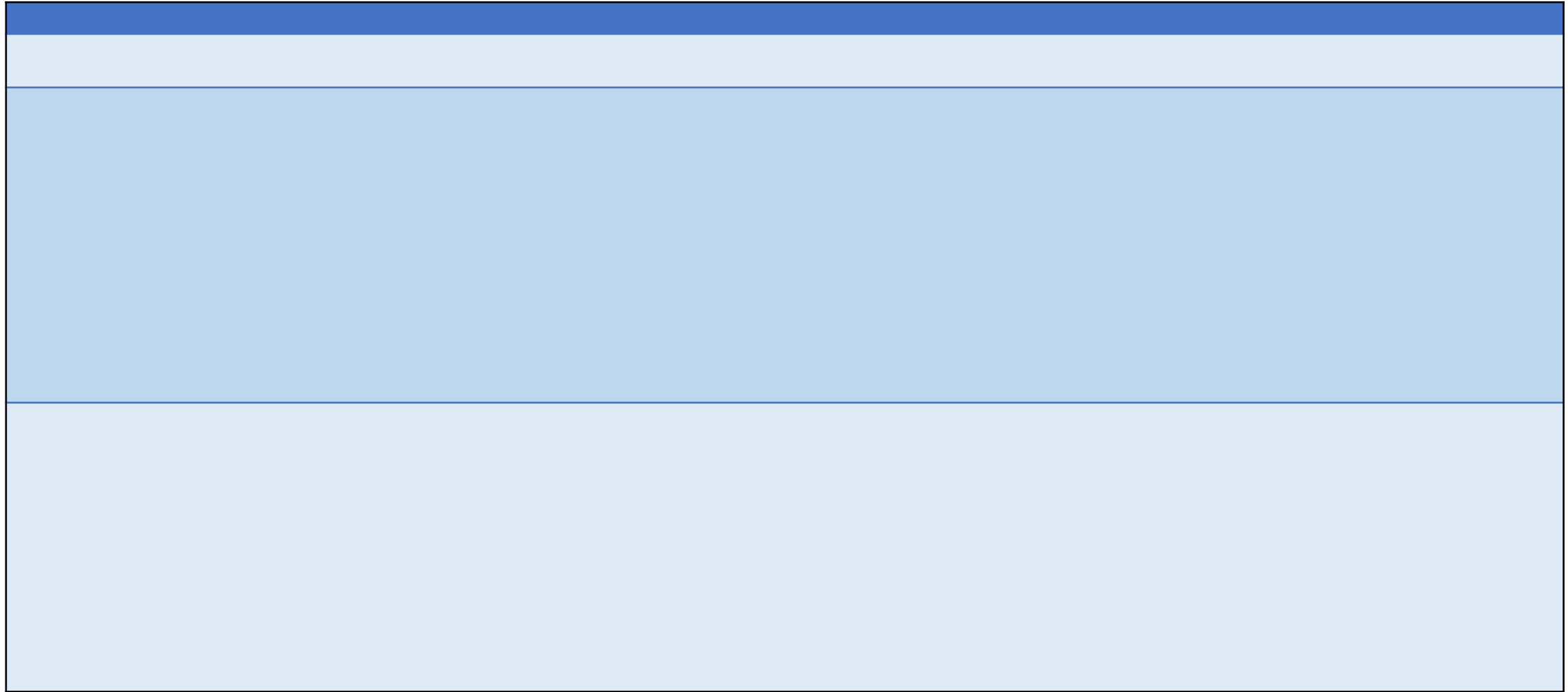


QnA Session



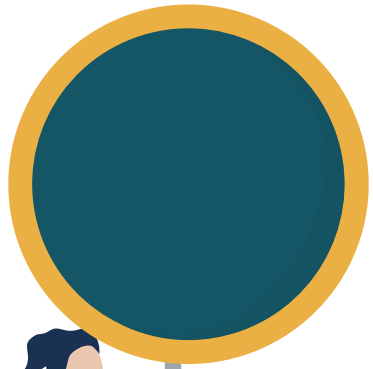






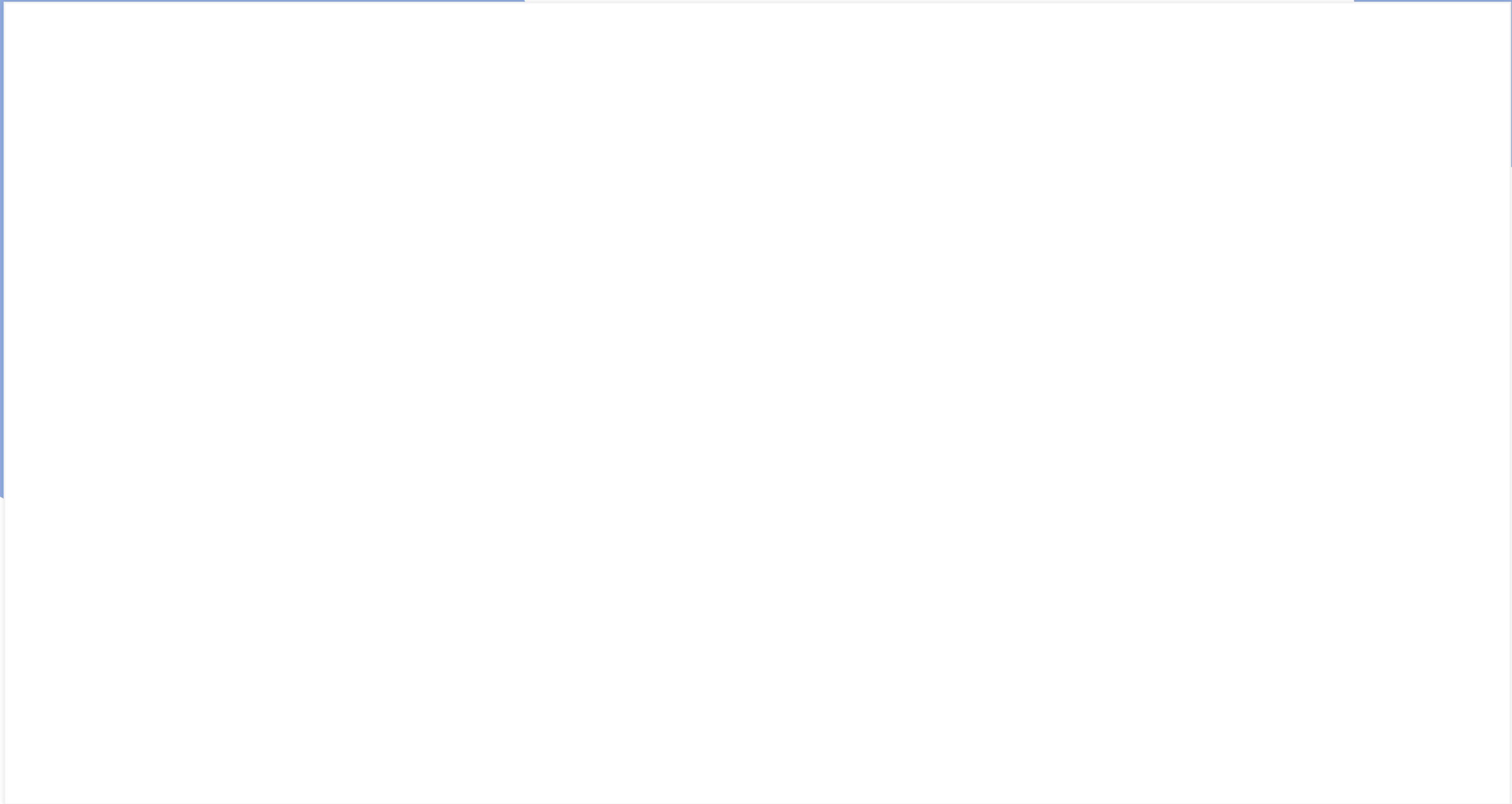


QnA Session



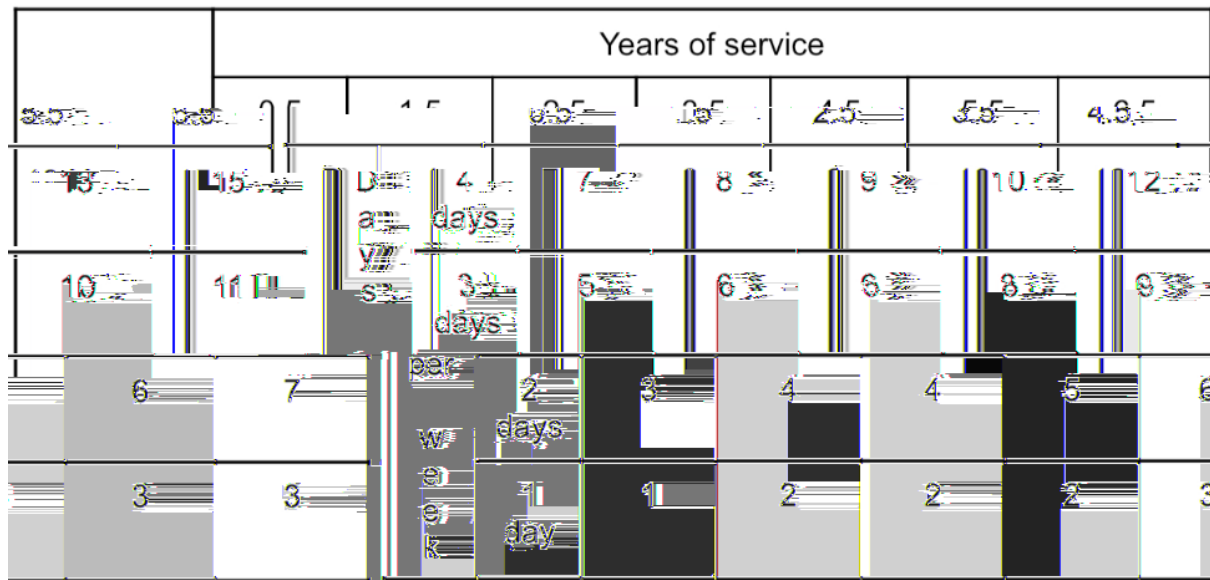
d

ft d ft d r



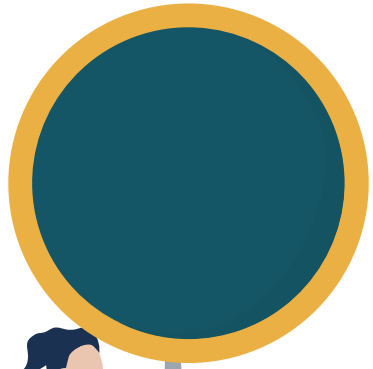
Years of Service	Annual Leave
5 (6 months)	10 days
11 days	1.5
12 days	2.5
14 days	3.5
16 days	4.5
18 days	5.5

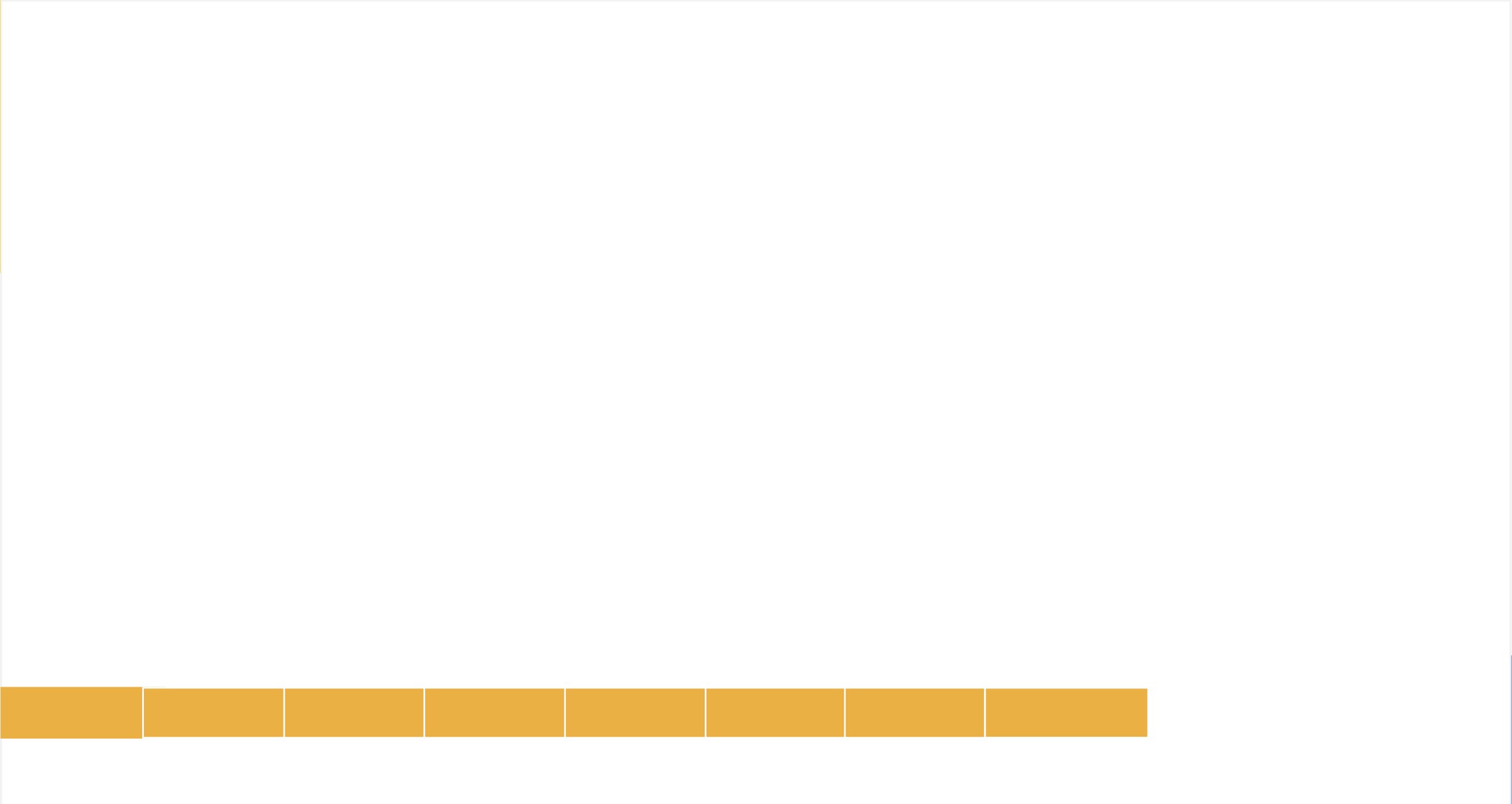
20 days 2.5 (for 20 years or more)





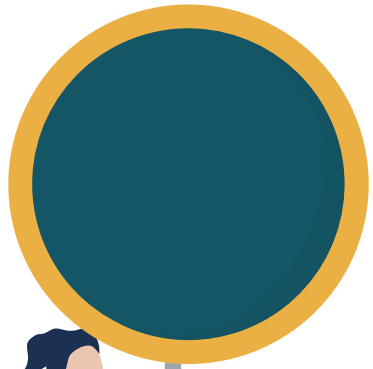
QnA Session

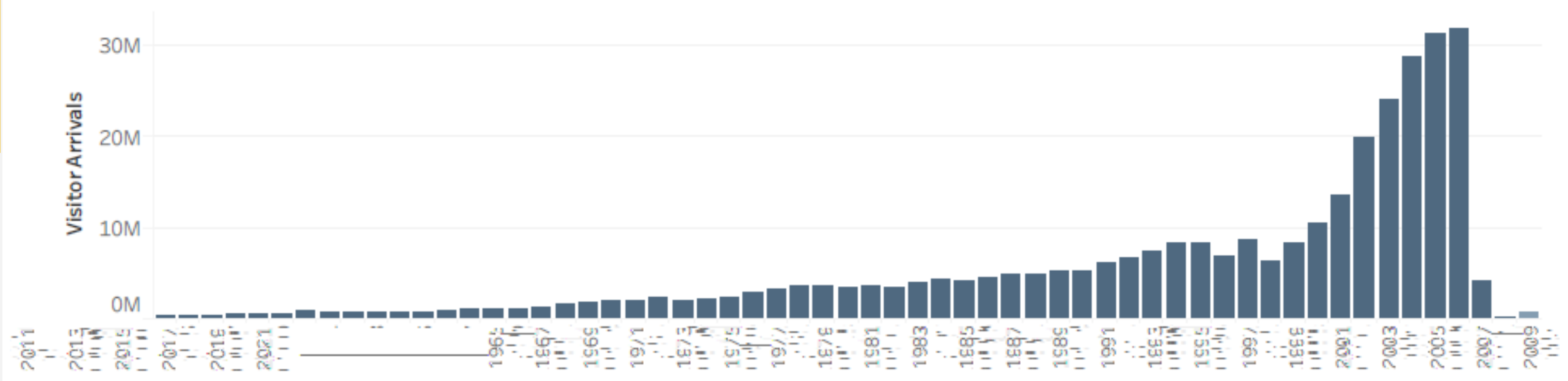






QnA Session

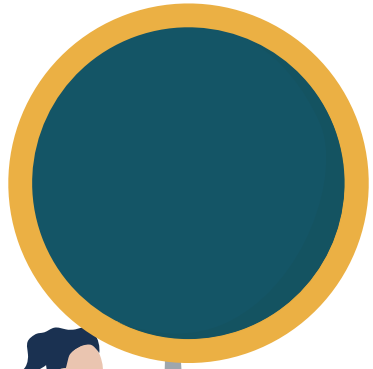


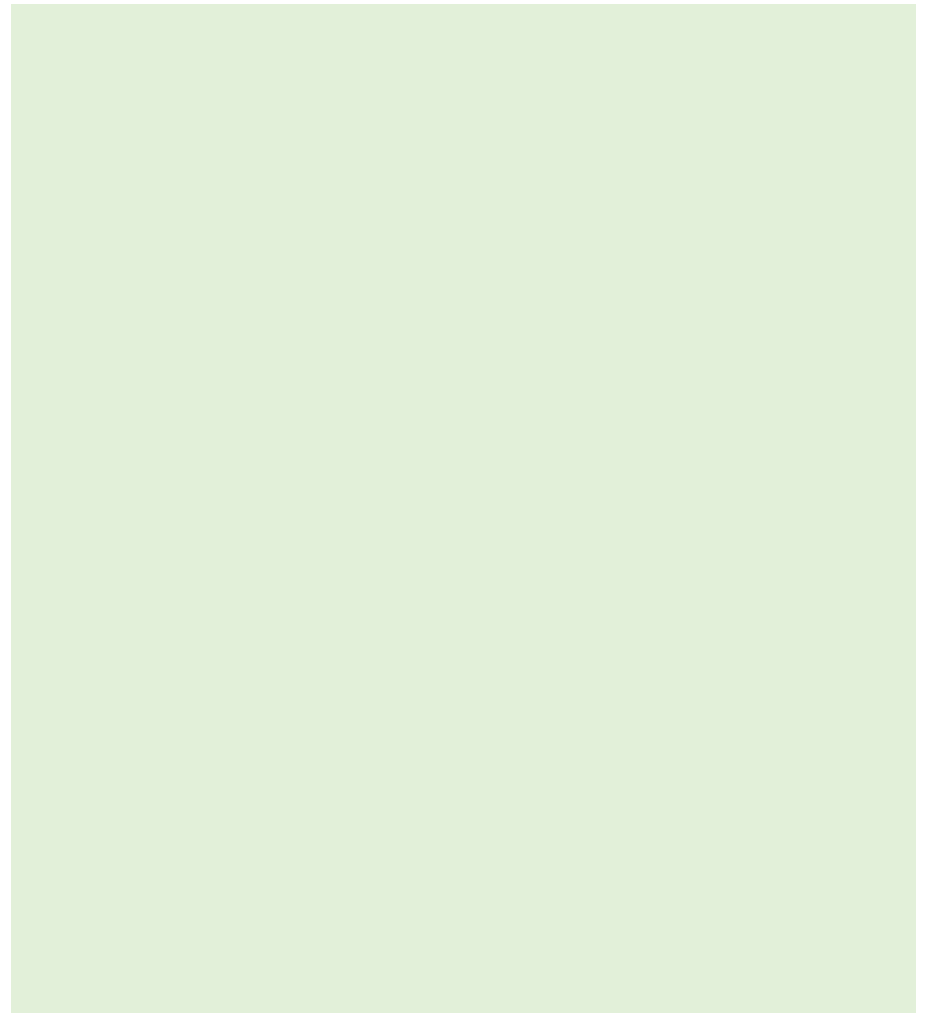


Last Update: 11/21/2022 6:48:08 AM UTC



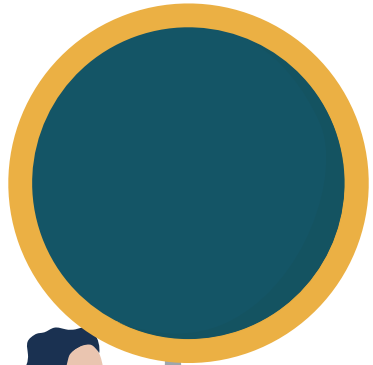
QnA Session







QnA Session



Open Discussion



Thank You

