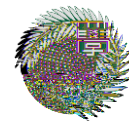


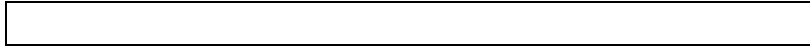
北海道大学
HOKKAIDO UNIVERSITY



広島大学



宮崎大学
University of Miyazaki



/

. . 2/6)

/

. 1

/

.

/

.

/

/

.

/

.

/

.

/

1
2
3
4
5
6
7
8
9
10
11
12
13
14
15
16
17
18
19
20
21
22
23
24
25
26
27
28
29
30
31
32
33
34
35
36
37
38
39
40
41
42
43
44
45
46
47
48
49
50
51
52
53
54
55
56
57
58
59
60
61
62
63
64
65
66
67
68
69
70
71
72
73
74
75
76
77
78
79
80
81
82
83
84
85
86
87
88
89
90
91
92
93
94
95
96
97
98
99
100

. . 1 /
/
/

/- . - 51.0 /- . - 512.

/- 1

Cell 5 1

Virological characteristics of the SARS-CoV-2 Omicron BA.2 spike

#, #, Hesham Nasser#, #, #, #, #, #,
Jiri Zahradnik#, , , , , , , , , ,
, , , , , , , , , ,
, , , , , , , , , ,
Phenotype Japan (G2P-Japan) Consortium, , *, , *, *, *,
*, *, *

#Equal contribution; *Corresponding author

DOI 10.1016/j.cell.2022.04.035

URL [https://www.cell.com/cell/fulltext/S0092-8674\(22\)00533-5](https://www.cell.com/cell/fulltext/S0092-8674(22)00533-5)

- 0 31- 6 // . /
- 0 31- 6 // . 0

- 6- 650/ 643-

- 63 01/ 0/ 36

- . . 4- 3 / 3. - - . . 4- 3 / - 6/

- 5/ 1/ 1 04. . - 5/ 1/ 1 3- 1-

- 652 25 4. . 1

.

/

. . 2/ 6)

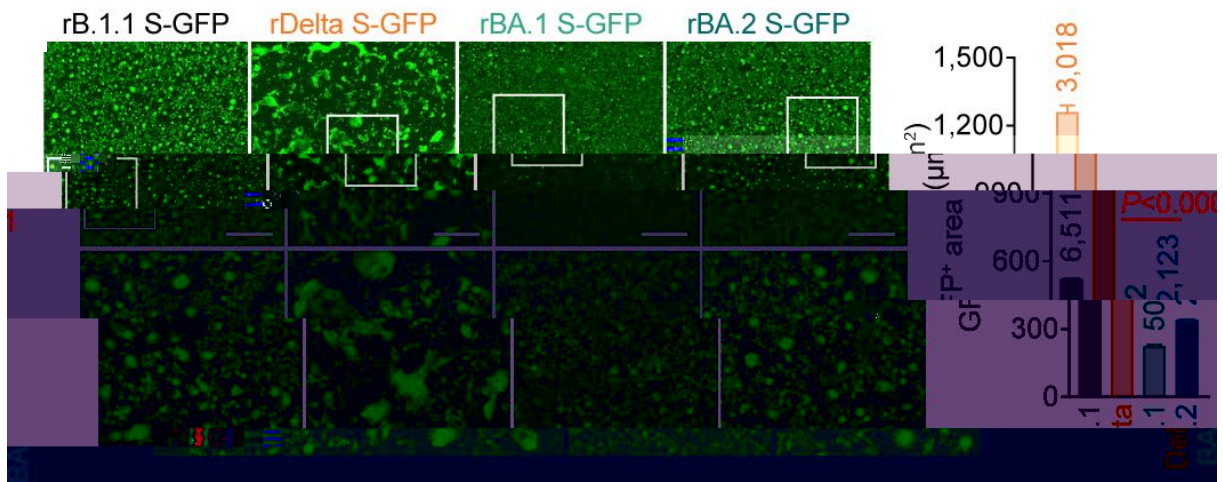
.

/

. . . 4
. 3.4/)

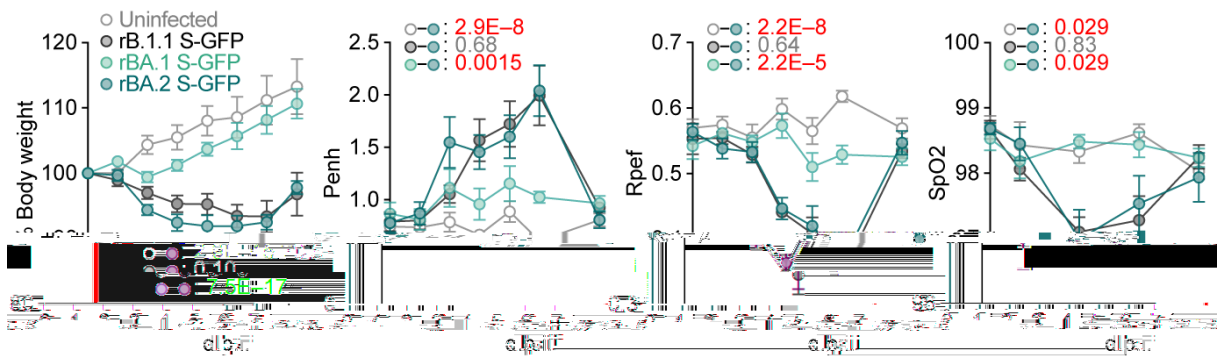
. 02.
. . 2/6)

.



3, /

15



/

/

))

/

/