

様式 1 公表されるべき事項

国立大学法人広島大学(法人番号1240005004054)の役職員の報酬・給与等について

1

--	--	--	--	--	--	--	--	--	--

2

		16					18	100	10
			22						
			28	10					

2

						(7	1,107,000)	
							100	120	
		167.5	12	100	25	100	6	6	100
					100	1625			
		25		95					100
		100		1625					167.5

						(1	706,000	4	895,000
)			
							100	120	
							6	6	100
		157.5				100	1625	12	100
									25
									100
		25		95					1625
		100		157.5					

$$\left(\begin{array}{c} 1 \end{array} \right)$$

$$\left(\begin{array}{c} (1 \quad 706,000) \\ 100 \quad 25 \quad 100 \quad 1625 \quad 6 \quad 100 \quad 120 \quad 100 \quad 167.5 \quad 12 \\ 25 \quad 95 \quad 100 \quad 1625 \quad 100 \quad 167.5 \end{array} \right)$$

$$\left(\begin{array}{c} 1 \end{array} \right)$$

	2						
	18,580	13,284	5,296				
A	15,188	10,740	4,152	295			
B	14,916	10,740	4,152	24			
C	14,728	8,472	3,818	2,438	4 1		
D	14,249	10,278	3,971			3 31	
E	14,230	9,816	3,795	619	4 1	3 31	
F	14,182	9,816	3,795	570	4 1		
G	3,720	3,720	0		4 1		
H	1,882	1,800	0	82	4 1		
A	8,597	7,332	998	267			
B	11,205	8,990	1,714	501			

5

3,700

„0

A	4,494 (47,194)	4 (39)		R2331	1.0
B	1,026 (31,269)	1 (39)		R2331	1.0
C	924 (22,443)	1 (19)		R3331	Q9
	3,523	4	5	R2831	Q9

1 A C

2 B

3 C

4 A B Q9
46,744 B 924 31,166

A 4,045

5 *

A	1.0 18
B	1.0 18

()

(100 120 6 100 25 28 10)

1
408,868
2
445,965

2

3,700

416,203

4

16

2

100

125

6

100

92

9

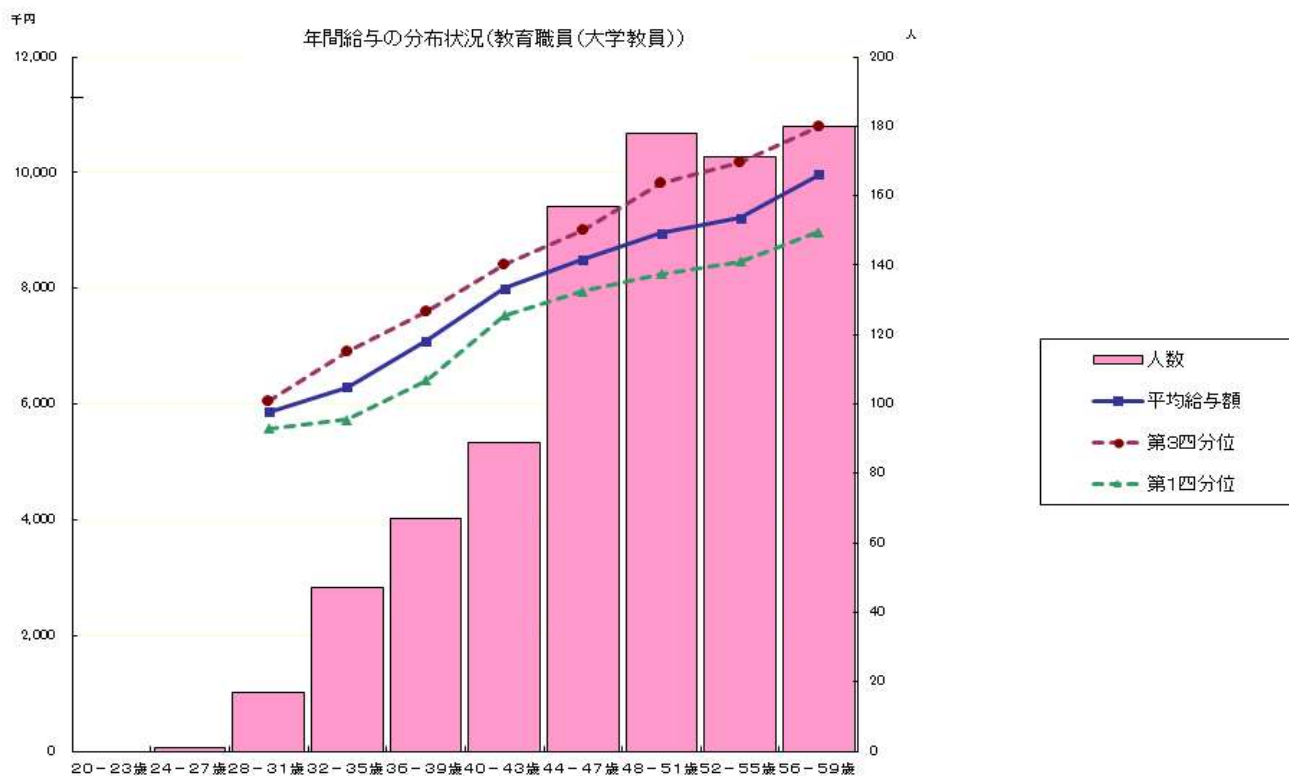
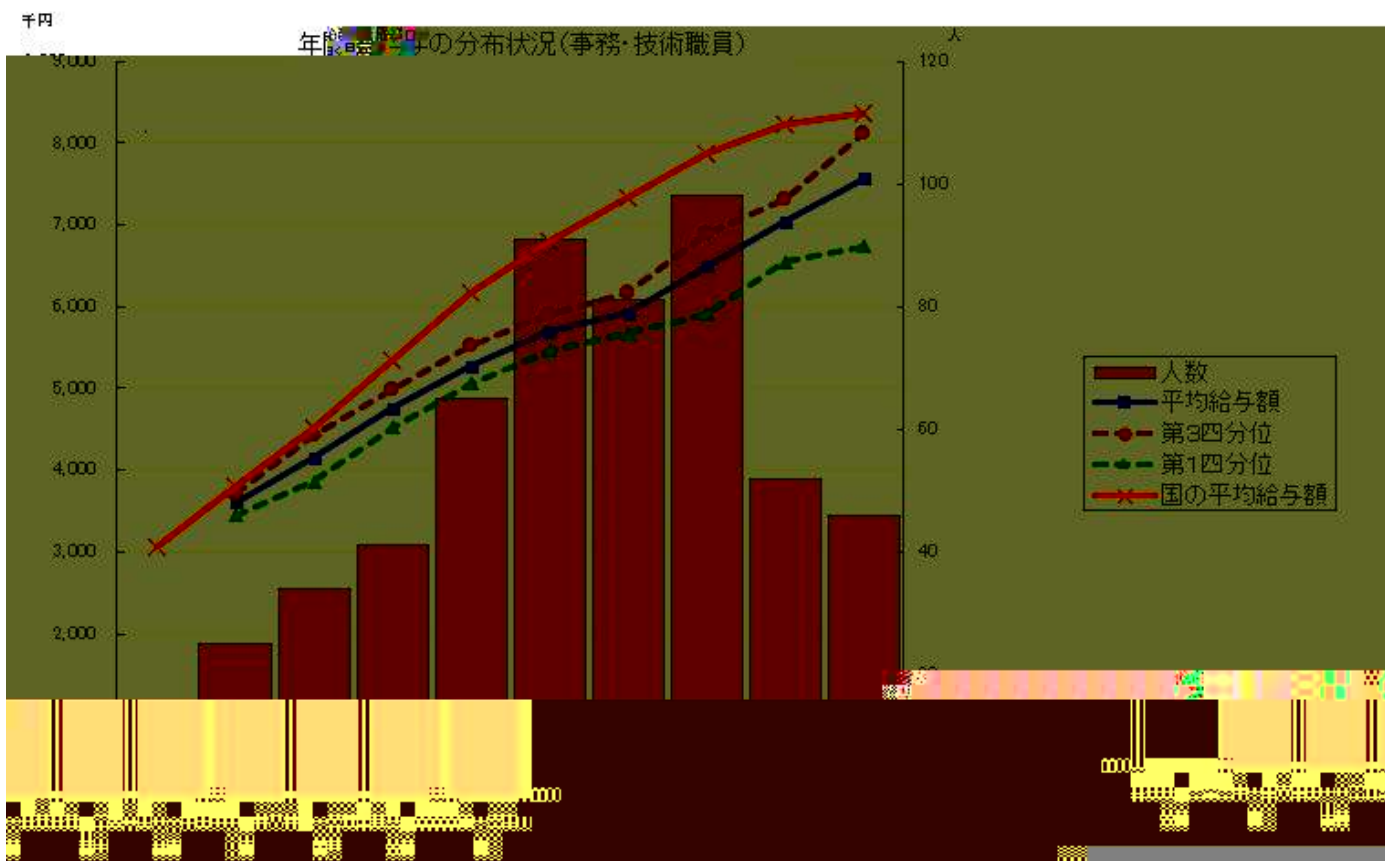
ž

ž

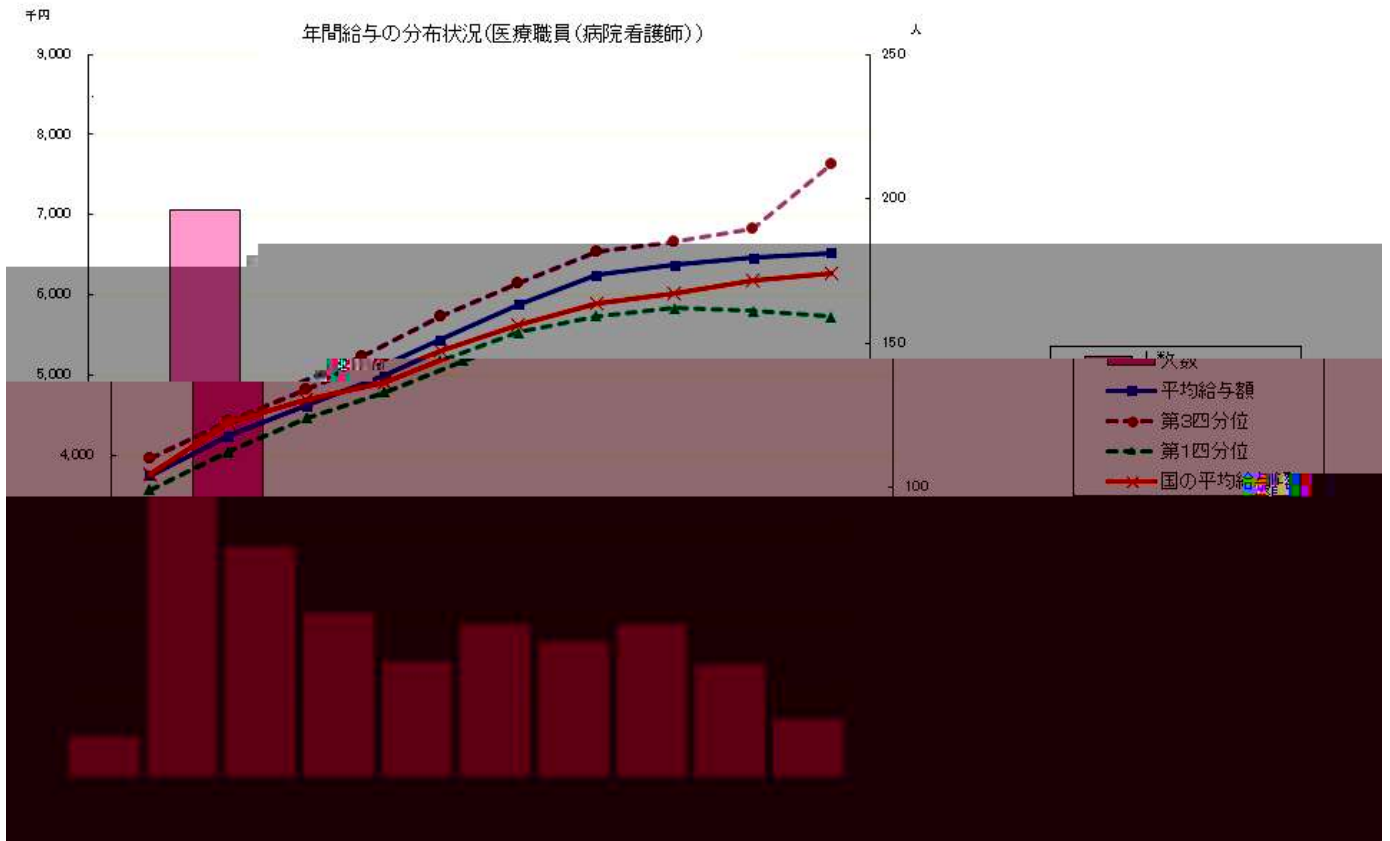
0

2,590	45.1	7,182	5,249	102	1,933
533	44.0	6,001	4,409	151	1,592
1,128	51.4	9,043	6,559	117	2,484

549	42.7	4,062	3,454	64	608
234	47.1	3,543	2,741	111	802
8	43.9	7,429	5,691	25	1,738
46	36.8	3,909	3,418	0	491
56	43.3	3,236	2,522	70	714
72	31.8	4,076	3,108	68	968
118	43.6	5,404	5,404	0	0
12	28.2	2,806	2,806	0	0
3	64.2	5,204	5,204	0	0
48	53.1	7,826	7,826	0	0
48	53.1	7,826	7,826	0	0



年間給与の分布状況(医療職員(病院看護師))



	11	55.9	9,674	11,563	7,976
	39	54.0	7,963	8,630	7,456
	37	50.8	6,800	7,612	6,194
	210	47.9	6,131	7,364	5,046
	187	39.1	5,209	6,420	3,816
	49	30.4	3,837	5,317	3,091

	495	56.5	10,318	15,251	8,023
	359	49.4	8,453	10,914	5,893
	61	49.8	8,083	9,210	6,532
	212	43.4	6,732	8,248	5,129
	1				

	1				
	6	55.2	8,312	8,708	8,080
	33	49.0	7,592	8,340	6,243
	80	44.6	6,139	7,195	5,240
	479	33.3	4,765	6,517	3,489

		12			
		500	486	49.3	
		500	51.4	50.7	
		558 398	588 404	57.0	40.7
		586	57.3	57.9	
		41.4	42.7	42.1	
		46.7 32.8	47.7 34.2	47.2	37.5

		12			
		54.3	52.5	53.4	
		45.7	47.5	46.6	
		80.2 39.6	85.1 40.5	82.7	40.0
		57.8	56.6	57.2	
		42.2	43.4	42.8	
		83.4 32.8	86.7 37.3	85.0	38.0

		12			
		54.3	53.4	53.9	
		45.7	46.6	46.1	
		53.4 42.3	54.5 42.4	54.0	43.1
		58.0	57.0	57.5	
		42.0	43.0	42.5	
		46.7 38.0	47.7 39.0	47.2	38.5

					101.2 97.0 97.3 98.1 102.5
	50.9%	4.1%	0%		1
	1	5			
		2			
					38.4
	80,883,382,000			31,073,703,226	
		0		2	
					29.1%
	22,648,379,854			77,844,551,487	
				100	
		38.4			
				101.2	
					25 12 24
				100	

94.4

182,200	2,728,005	
281,808	4,695,482	
454,436	7,460,662	
312,400	4,723,867	
362,766	6,044,406	
524,167	8,966,402	
10,000		6,500

	16	
28 4		

	28	29	30		2	3
(A)	21,729,421	22,436,426	22,440,428	22,648,379	22,806,836	
(B)	2,139,295	1,854,616	2,049,620	1,838,944	1,684,364	
(C)	11,395,407	10,621,900	10,853,172	11,325,259	11,707,522	
(D)	4,774,307	4,807,181	4,934,798	5,048,077	5,169,978	
(A+B+C+D)	40,038,432	39,720,125	40,278,019	40,860,661	41,368,702	

(18)

1.23