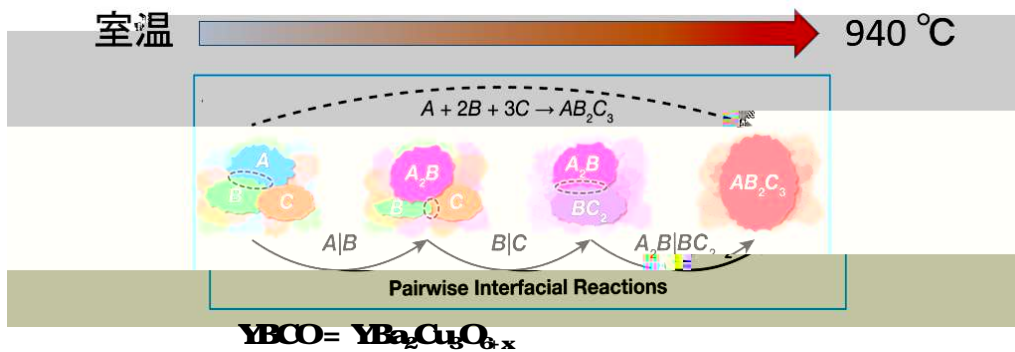
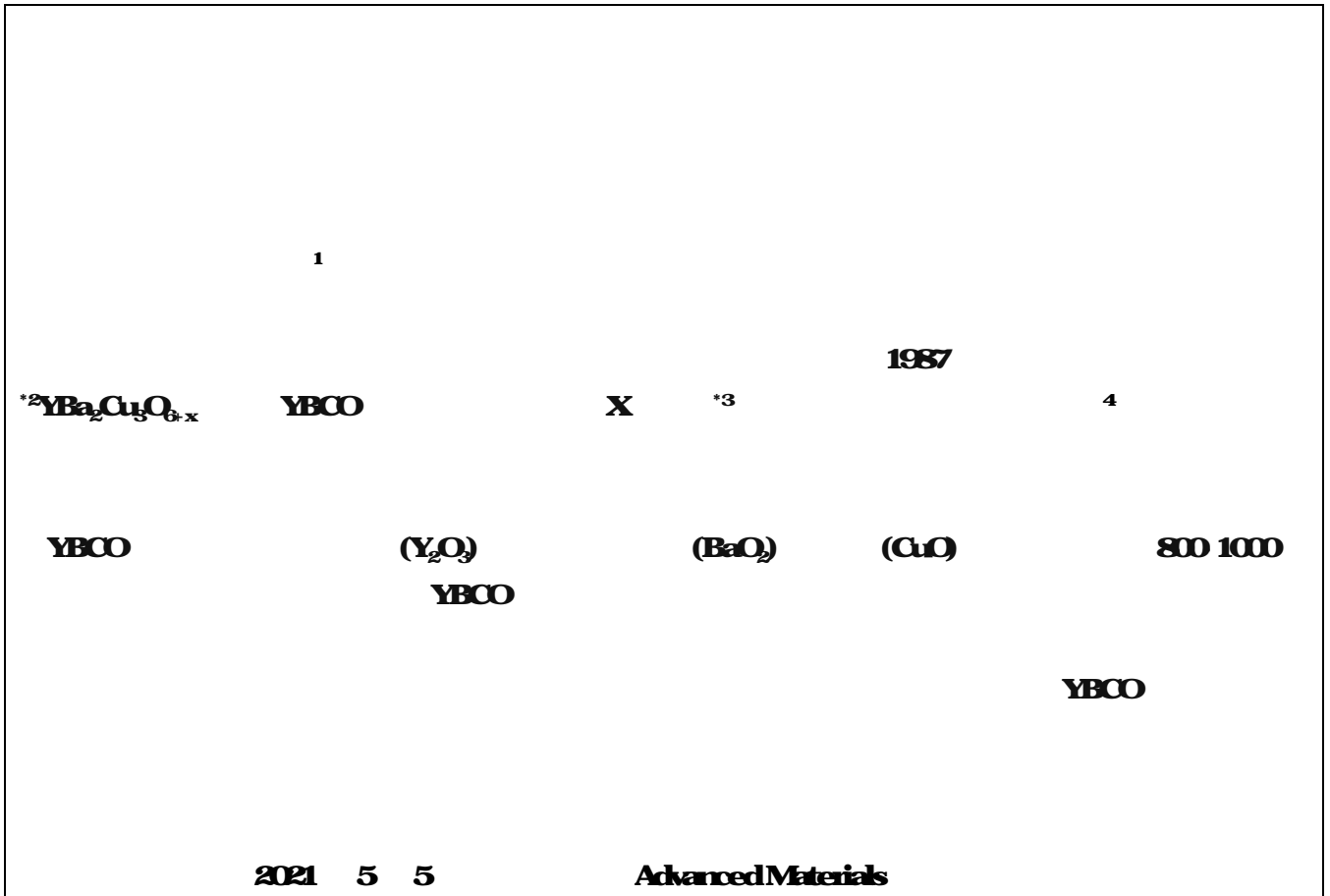


2021/5/10



X



3

X

A B C 3

2

A B A C B C 3

2

YBCO  
(CuO)  
YBCO

YBa<sub>2</sub>Cu<sub>3</sub>O<sub>6-x</sub>  
800 1000

1987

(Y<sub>2</sub>O<sub>3</sub>)

YBa<sub>2</sub>Cu<sub>3</sub>O<sub>6-x</sub>  
(BaCO<sub>3</sub>),

X

(BaCO<sub>3</sub>)

(BaO)

30

YBCO

X

1

YBCO

2

YBCO

2

J16K21724, J19H04682, J20K0124

( )

(MASACU)

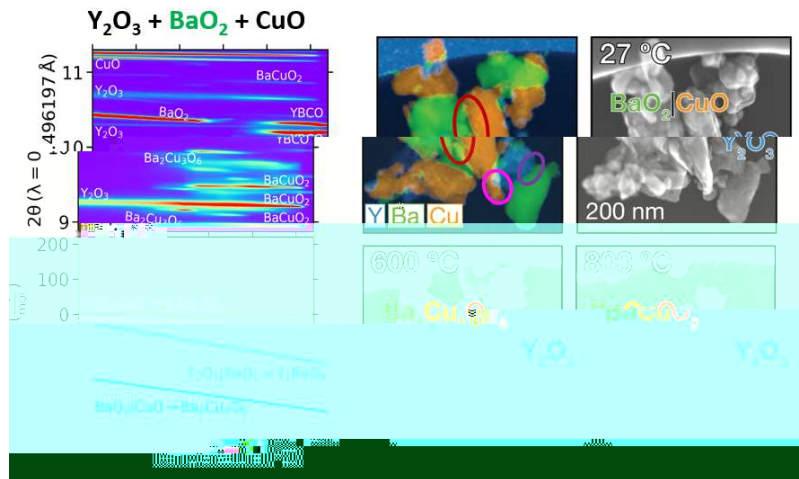
**Observing and modeling the sequential pairwise reactions that drive solid state ceramic synthesis**

<sup>1</sup> Christopher J Bartel<sup>2</sup> <sup>3</sup> <sup>3</sup> <sup>4</sup> <sup>4</sup>  
Yongning Wang<sup>5</sup> <sup>6</sup> <sup>6</sup> <sup>7</sup> Nataly Carolina Rosero Navano<sup>1</sup>  
<sup>1</sup> Gerhard Ceder<sup>2,8</sup> Wenhao Sun<sup>9</sup> <sup>1</sup> <sup>2</sup>  
<sup>3</sup> r <sup>4</sup> <sup>Î</sup> / <sup>5</sup> ”  
<sup>6</sup> <sup>7</sup> <sup>8</sup>  
<sup>9</sup>

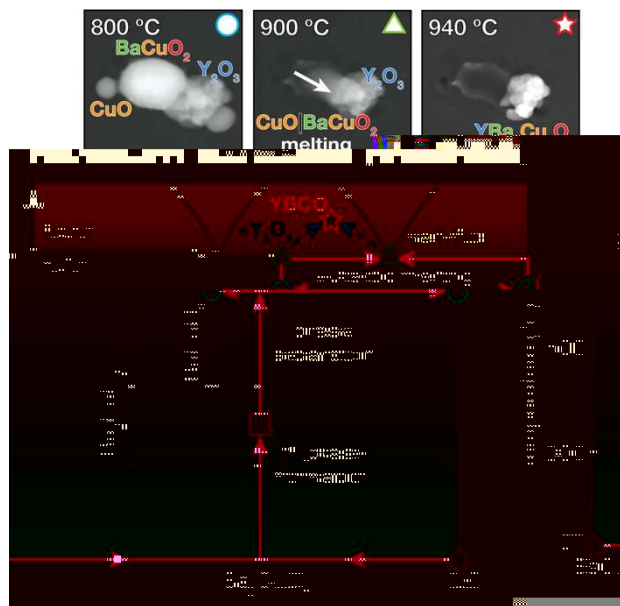
**Advanced Materials**

**10.1002/adma.202100812**

**2021 5 5**



# 1 YBCO



- 1            ...  
              **600**
- 2            ...            **25K**
- 3        **X**            ...  
                              **SPring 8**                                **X**
- 4            ...

ローレンス・バークレー  
国立研究所

**SPring 8**

理化学研究所  
大型放射光施設

日立ハイテク

