



WPI-MANA

MIRC

WPI-MANA

MANA

JST

JST

1

WPI-MANA

[]

http://www.k.u-tokyo.ac.jp/info/entry/22_entry760/ S. Watanabe, *et al.*, *Nature* 2019,

[]

100

3

[]

Controlled steric selectivity in molecular doping towards closest-packed
supramolecular conductors

Shinya Kohno, Yu Yamashita, Naotaka Kasuya, Tsubasa Mikie, Itaru Osaka, Kazuo
Takimiya, Jun Takeya, and Shun Watanabe*

DOI 10.1038/s43246-020-00081-3

11 4

7

11 4

10

TEL 04-7136-3788 / E-MAIL swatanabe@edu.k.u-tokyo.ac.jp

TEL 04-7136-5450 / E-MAIL press@k.u-tokyo.ac.jp

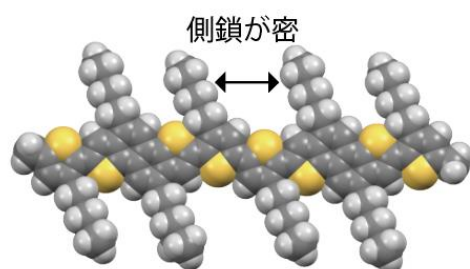
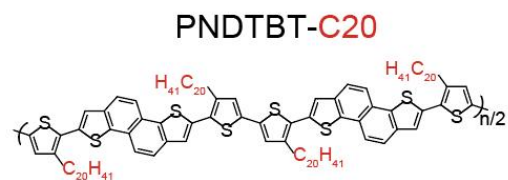
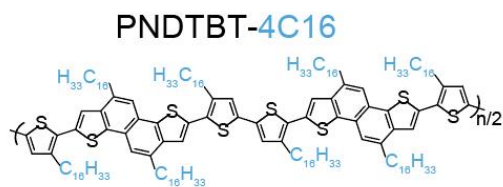
TEL 029-862-6216 / E-MAIL hodo-ml@aist.go.jp

TEL 082-424-3749 / E-MAIL koho@office.hiroshima-u.ac.jp

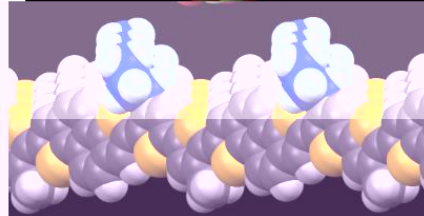
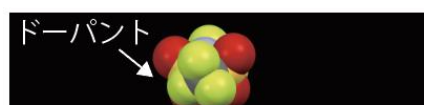
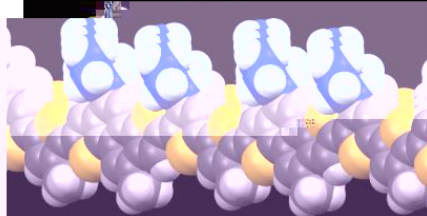
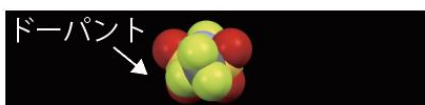
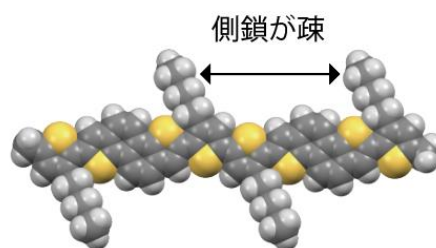
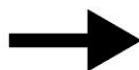
1

28 6 1





隙間を拡張



PNDTBT-4C16 PNDTBT-C20