

1

$$\left(\begin{array}{cc} 20 & \\ & 100 \quad 10 \end{array} \right)$$

$$\left(\begin{array}{cccccc} 4 & & & & & \\ 2\% & 3\% & 300\text{km} & 4\% & 6\% & 60\text{km} \quad 300\text{km} \end{array} \right)$$

Four empty curly braces are stacked vertically below the first row of the second matrix.

	20						
	19,761	13,704	5,547	535 25			
A	15,591	11,064	4,478	49			
B	14,259	10,116	4,094	49	4 1		
C	13,958	8,736	3,711	351 636 524	4 1		
D	14,881	10,353	4,094	434		3 31	
E	15,735	11,064	4,478	193		3 31	
A	12,616	8,736	3,536	344			
B	3,888	3,888					

28 182

20

A	6,520 60,518	4 34	0 10	20 3 31	1.0	20 6 25 1.0	

A

()

()

()

--	--	--	--	--	--

2 1 1 8 1

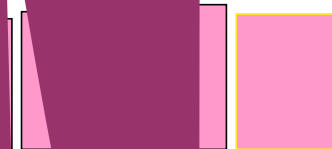
6 1 1 12 1 6

			20			
	2,739	43.9	7,345	5,326	112	2,019
	571	41.9	5,636	4,132	170	1,504
	1,425	47.8	8,953	6,448	114	2,505
	444	34.4	4,790	3,528	43	1,262
	2					
	7	47.9	7,521	5,458	0	2,063
	3	38.2	5,112	3,715	0	1,397
	92	44.6	7,300	5,350	92	1,950
	96	43.1	7,202	5,288	115	1,914
	95	43.0	5,796	4,212	99	1,584
	1					
	3	56.8	6,344	4,575	59	1,769

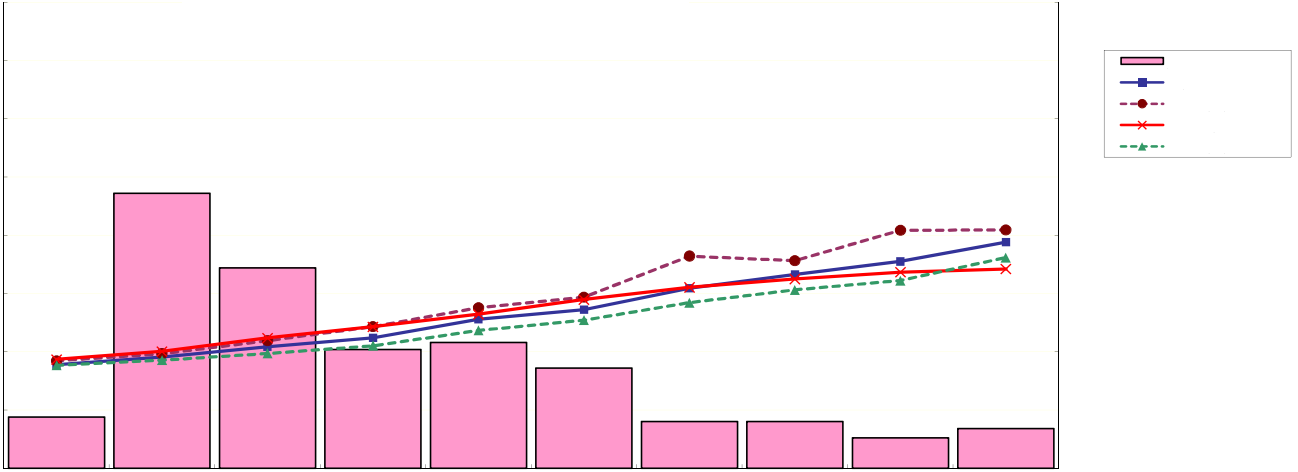
--	--	--	--	--	--	--

348	38.2	4,537	3,894	65	643
87	45.7	3,897	2,955	165	942
43	39.1	7,240	5,537	26	1,703
37	34.8	3,384	3,084	0	300
9	51.8	2,848	2,422	157	426
1					
55	29.5	3,793	2,837	104	956
1					
84	39.5	5,752	5,752	0	0
31	27.5	2,400	2,400	0	0

)



10,390
8,084
6,859
6,032



	7	51.9	7,614	8,043	8,434
	30	50.9	7,050	7,529	8,077
	73	41.0	5,091	5,544	5,928
	334	31.1	3,796	4,254	4,517

		1	2	3	4	5	6	7	8	9
	571	70 12.3%	85 14.9%	276 48.3%	84 14.7%	35 6.1%	17 3.0%	4 0.7%		
		50 23	56 27	59 33	59 45	59 48	59 43	58 48		
()		3,251 1,884	4,125 2,398	5,102 2,713	5,789 4,253	6,081 4,656	7,239 5,885	8,251 6,047		
()		4,339 2,594	5,583 3,286	7,000 3,718	7,746 5,951	8,222 6,657	9,879 8,025	11,392 8,326		

		1	2	3	4	5
	1,425		338 23.7%	101 7.1%	421 29.5%	565 39.6%
			62 27	61 30	62 31	62 39
()			6,285 3,110	7,311 4,187	7,786 4,276	10,148 5,903
()			8,490 4,245	9,859 5,669	10,640 5,904	13,880 8,409

		1	2	3	4	5	6	7
	444		335 75.5%	72 16.2%	30 6.8%	7 1.6%		
			58 22	59 28	59 39	59 46		
()			5,181 2,348	5,403 2,875	6,219 4,116	6,369 5,442		
()			7,126 3,215	7,378 4,025	8,438 5,771	8,755 7,461		

		66.8	65.8
		33.2	34.2
		29.7	43.8 31.0

85.5
98.1

98.8

96.6
100.5

100

	85.5			
			90.5	
			84.6	
			90.1	
	30,144	46.6	64,653	20
				46.6

	96.6			
			95.1	
			95.8	
			95.0	
	30,144	46.6	64,653	20
				46.6

96.5

20

	20	19			16
	22,943,364	23,432,000	488,636	2.1	978,893
	2,003,033	2,991,850	988,817	33.1	676,777
	7,782,521	6,077,670	1,704,851	28.1	3,965,372
	3,542,900	3,476,103	66,797	1.9	186,827
	36,271,818	35,977,623	294,195	0.8	2,496,529

1

17

2

19

17 12 24

	17	18	19	20
	24,993,046	23,555,024	23,432,000	22,943,364
		5.8	6.2	8.2
		5.8	6.9	8.9

1

17 12 24

18

19 20

0% 0.7% 0%

2 17

17