

国立大学法人広島大学の役職員の報酬・給与等について

1

{ 100 10 }

{
{
{
{
{

	19,010	13,620	4,854	535		
A	15,454	11,004	4,008	441		
B	15,062	11,004	4,008	49		3 31
C	13,574	9,360	3,223	354 636		3 30
D	13,969	10,056	3,864	49	4 1	
E	12,642	9,360	3,223	59	4 1	
F	15,269	11,004	3,789	475		3 31
A	12,213	8,688	3,096	428		
B	3,852	3,852	0	0		

28

182

13

140

(())

(())

()

		1 1 1
		2 8
		1
		(6 1 12 1) 6

4 2 15 3

7,000 10,000

35

5,000

1
6,000 18,000

23 4 1

43

22 1 1

23 4 1

10

1

3

30,000 300,000

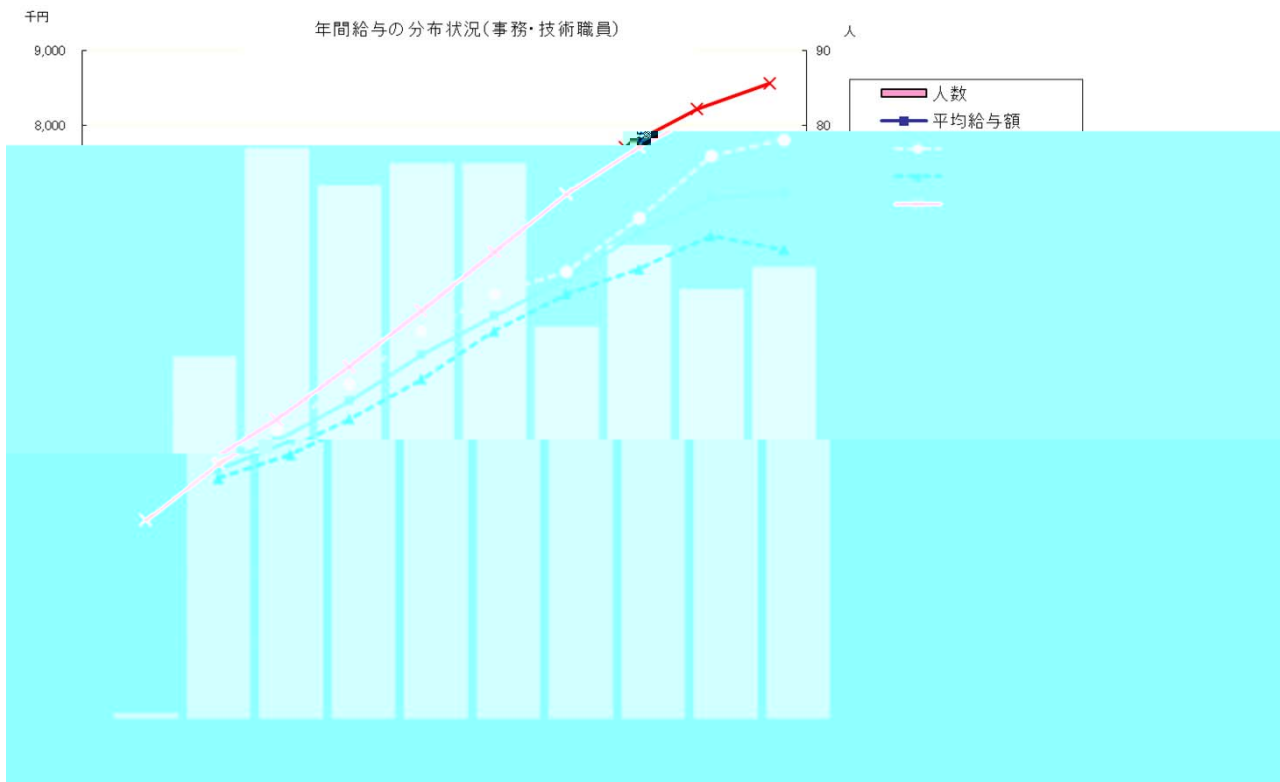
		2,838	43.8	7,009	5,257	106	1,752
		585	41.7	5,489	4,158	168	1,331
		1,406	48.6	8,687	6,471	109	2,216
		534	34.1	4,676	3,553	38	1,123
		2					
		7	45.6	6,537	4,879	0	1,658
		4	41.5	5,228	3,919	0	1,309
		96	45.0	7,023	5,315	84	1,708
		86	42.5	6,808	5,172	115	1,636
		115	41.6	5,376	4,054	85	1,322
		1					
		2					

		1					
		1					

		579	39.0	4,421	3,791	62	630
		171	42.7	3,520	2,706	137	814
		66	40.7	7,768	6,063	27	1,705
		40	35.0	4,177	3,687	0	490
		53	45.3	3,075	2,418	92	657
		63	30.6	3,838	2,919	89	919
		1					
		140	39.5	5,444	5,444	0	0
		45	27.8	2,400	2,400	0	0

		4	35.5	6,900	6,900	0	0
		4	35.5	6,900	6,900	0	0

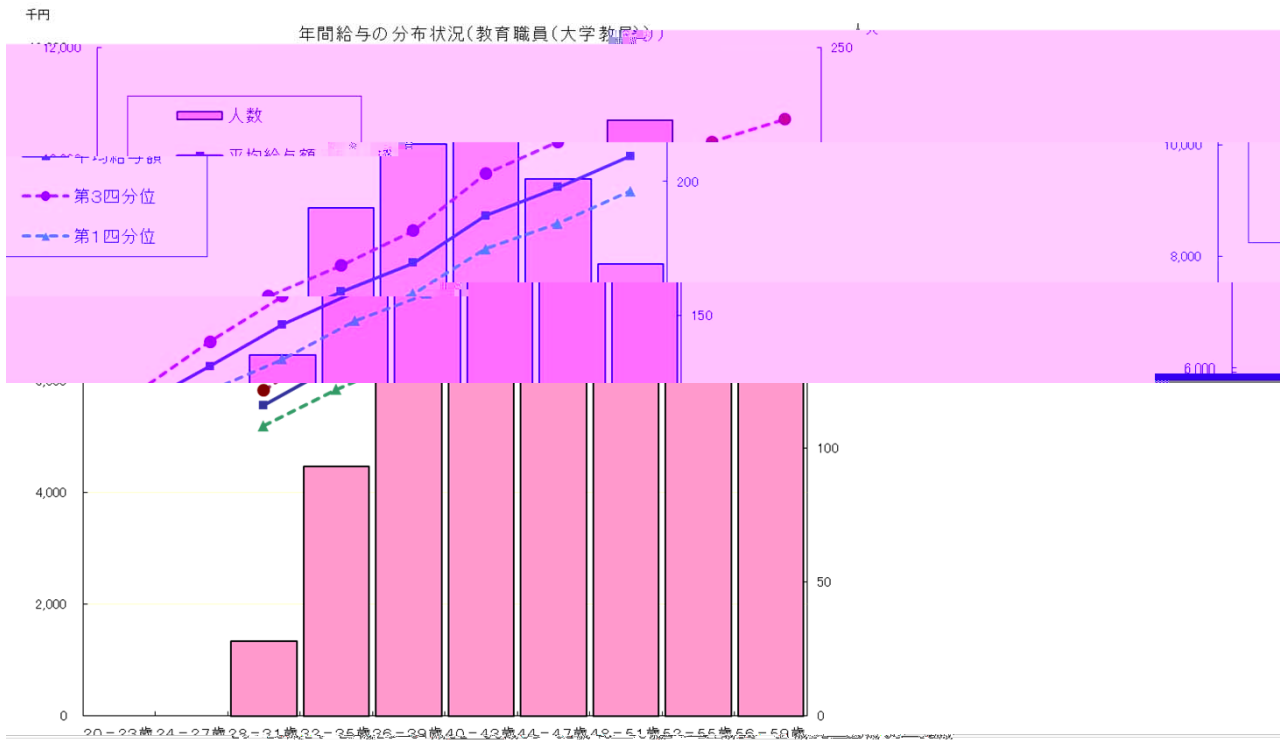
)



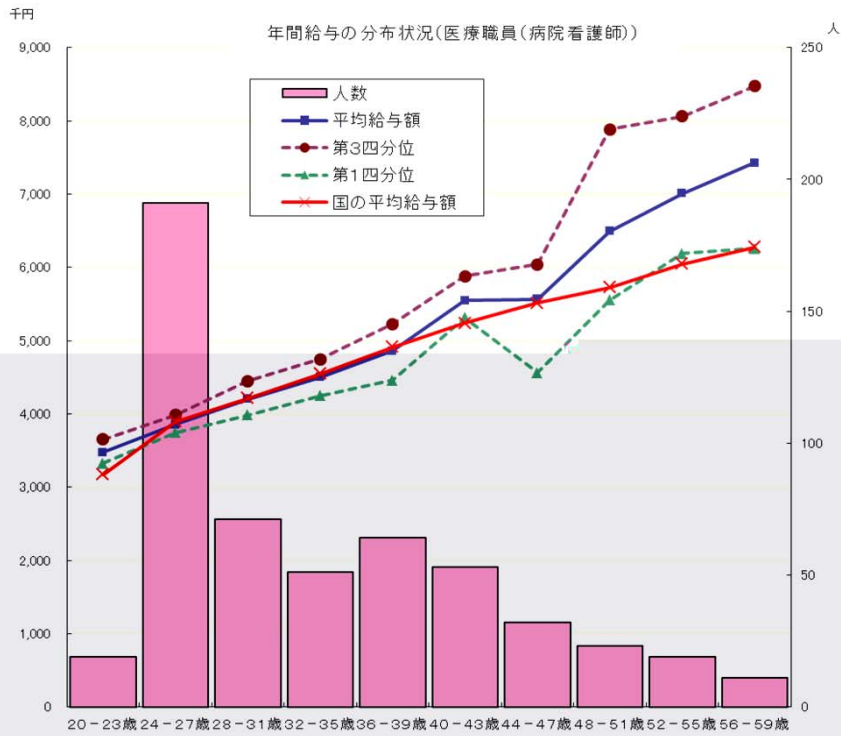
20-23

1

	8	57.0	8,687	9,518	9,714
	50	54.2	7,550	7,718	8,018
	45	52.6	6,471	6,697	6,943
	223	45.9	5,351	5,778	6,222
	104	38.8	4,277	4,727	5,113
	155	29.6	3,419	3,673	3,884



	568	55.1	9,525	10,142	10,646
	412	46.2	7,637	8,137	8,601
	106	45.3	7,098	7,886	8,617
	313	41.0	6,044	6,617	7,159
	7	43.5	4,804	5,910	6,606



	1	-	-	-	-
	7	51.1	8,271	8,225	8,433
	29	49.3	7,481	7,541	7,941
	78	40.8	4,790	5,412	6,003
	419	31.4	3,809	4,221	4,476

		585	45	110	275	80	47		
			7.7%	18.8%	47.0%	13.7%	8.0%		
		41	23	40	27	59	33	59	43
()		2,778	2,170	3,491	2,449	4,820	2,813	5,424	4,297
()		3,606	2,872	4,517	3,253	6,444	3,766	7,195	5,781

		20	8						
		3.4%	1.4%	%	%				
		59	47	59	49				
()		6,293	5,559	8,642	6,333				
()		8,324	7,401	11,563	8,477				

		1,406		320	106	412	568		
			%	22.8%	7.5%	29.3%	40.4%		
				63	28	63	29	63	31
()				6,716	3,366	7,212	4,268	8,166	4,326
()				8,438	4,396	9,770	5,703	10,848	5,839

		534		419	78	29	7	1	
			%	78.5%	14.6%	5.4%	1.3%	0.2%	%
				58	22	59	30	59	39
()				4,913	2,405	5,024	3,107	6,453	4,078
()				6,562	3,181	6,941	4,216	8,475	5,578

87.1
99.3

99.8

102.4
102.5

100

		87.1	
			93.4
			86.2
			93.1
	23	29,521	42.0 70,364
		42.0	

		102.4	
			96.4
			100.2
			97.2
	0%	55.3%	12.1%
	23	29,521	42.0 70,364
		42.0	

97.1

23

23 22

(A)

(B)

(C)

(D)

(A+B+C+D)

1

18

2

22

7 54

	17	18	19	20	21	22	23
	24,993,046	23,555,024	23,432,000	22,943,364	22,614,274	21,921,054	22,085,926
		5.8	6.2	8.2	9.5	12.3	11.6
		5.8	6.9	8.9	7.8	9.1	8.2

1

17 12 24

18 19

20 21 22 23
 0% 0.7% 0% 2.4% 1.5% 0.23%

2 17

3 23

8.4%

8.2%

24 7

24 5