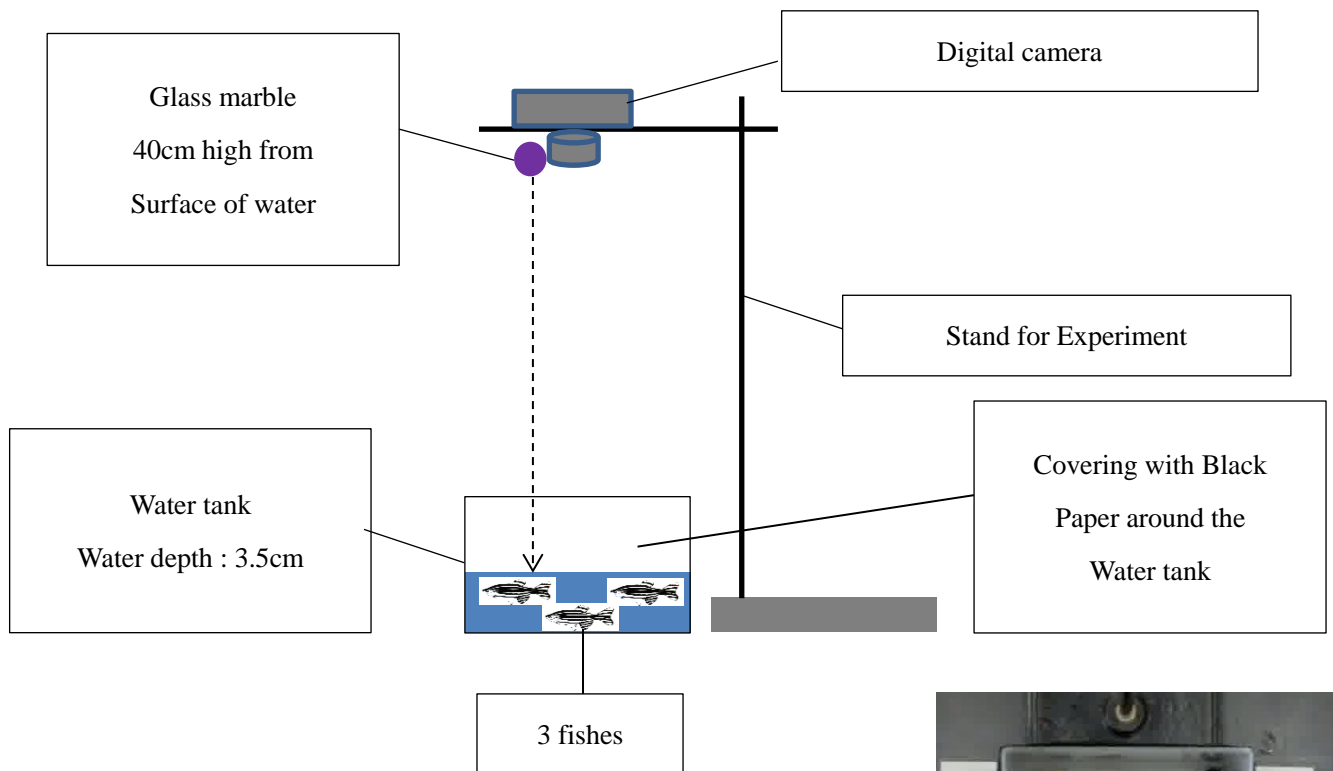


1. Experimental apparatus



2. Experiment

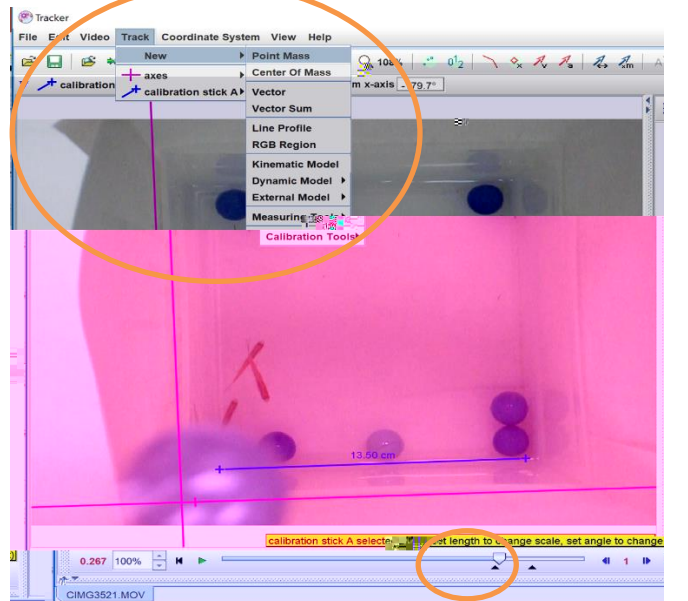
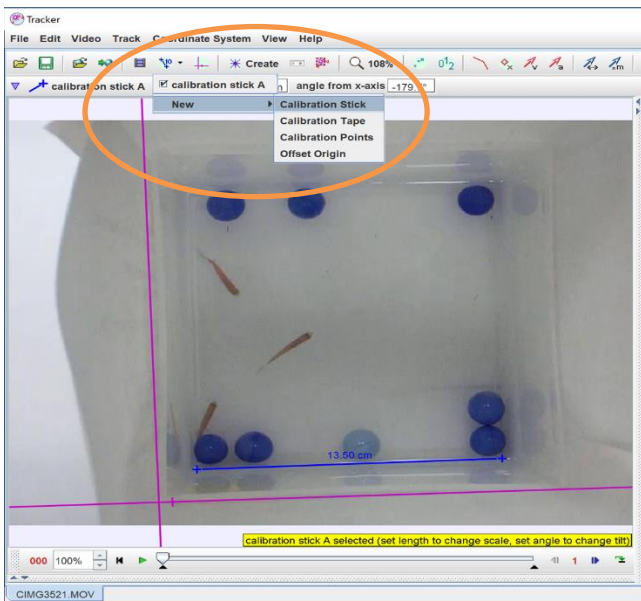
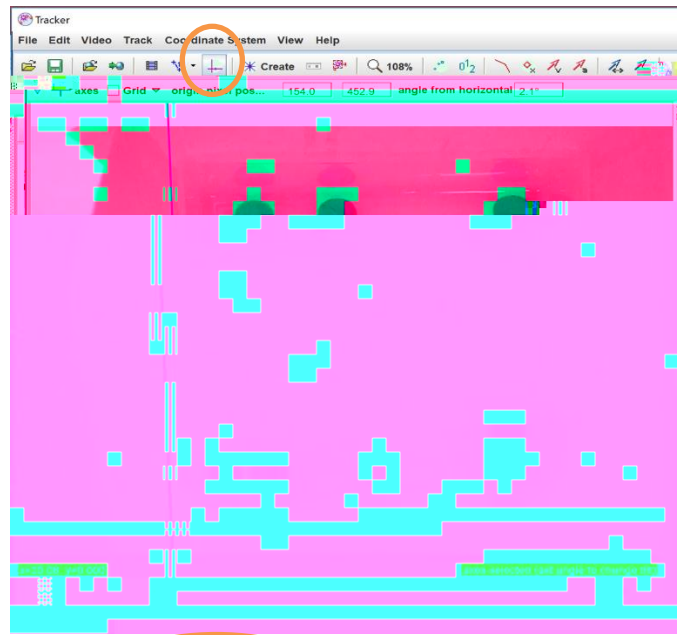
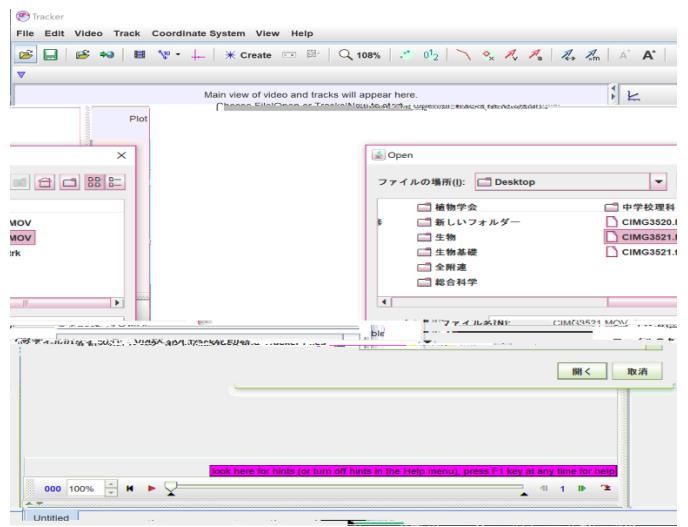
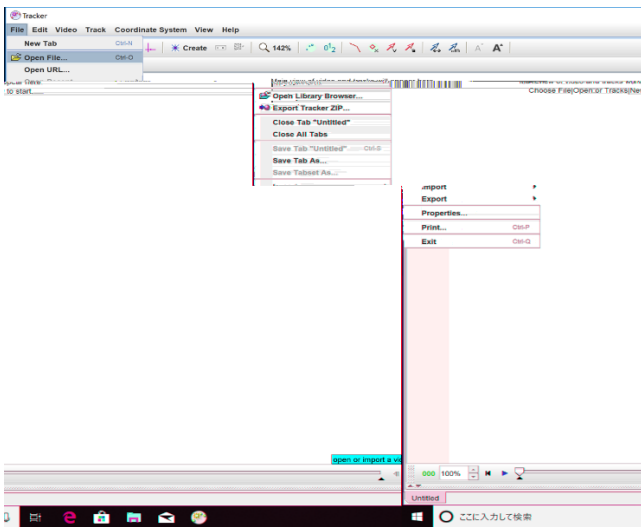
- Your digital camera: MENU
→ Moving Image Quality (動画画質) → HS120
means that you photograph the moving image with the speed of 120 frames per a second, that is $1/120$ [sec] \doteq 8.3 [mm sec].
- Recording on → Drop a glass marble → Recording off
- Repeat this 5 times

3. Analysis of the result

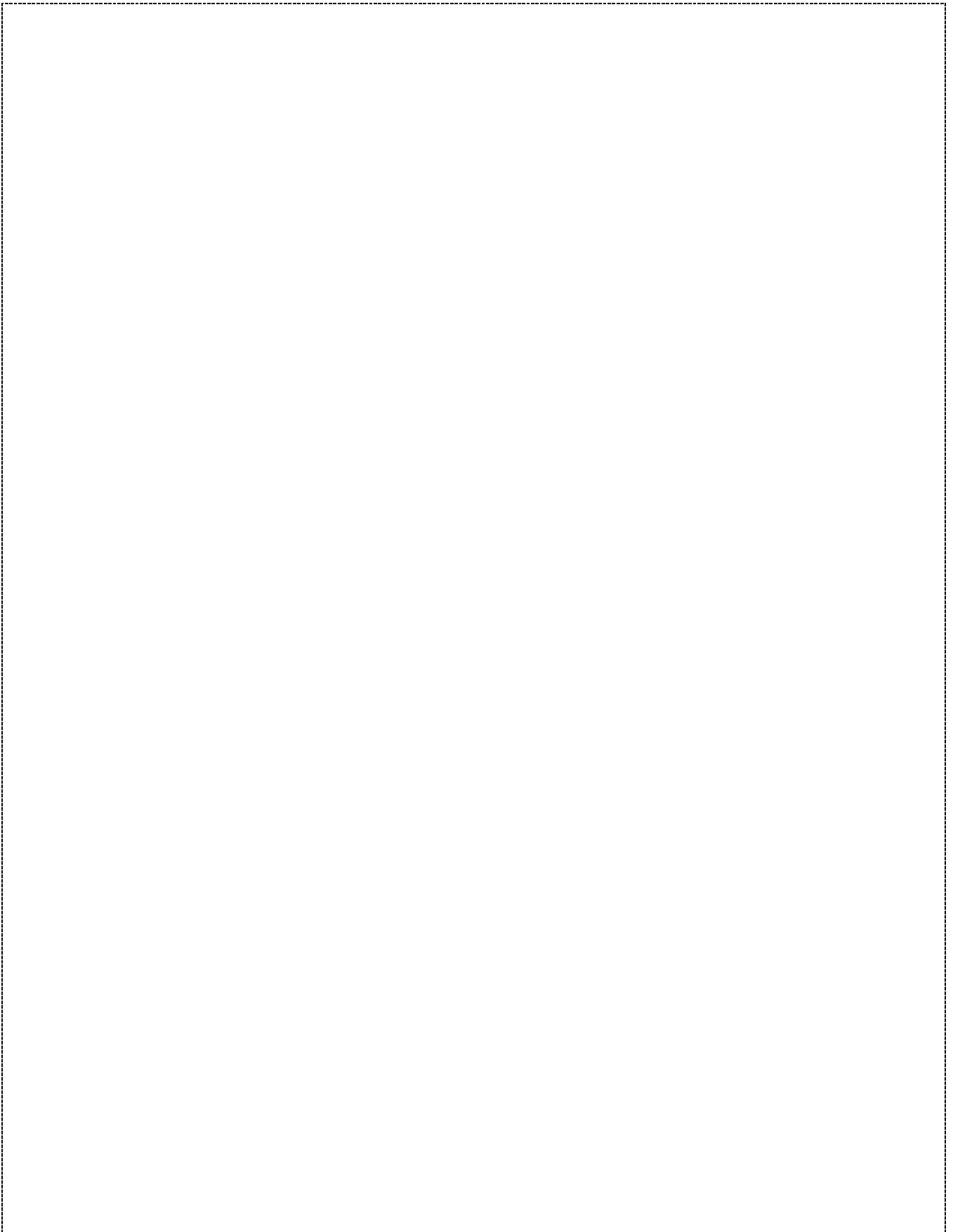
- Analyze your recorded moving image with *- Video analysis and Modeling Tool -*
<https://physlets.org/tracker/>
- Measure the swimming speed of the fish before and after that a glass marble fell to the surface of water.

4. Discussion and Conclusion

- Discuss whether fish use visual sense or using lateral line sense when danger approaches.
- Talk about your conclusion with scientific evidences in each group.



Discussion and Conclusion (your record)

A large, empty rectangular box with a dashed border, occupying most of the page below the section header. It is intended for the student to write their discussion and conclusion.