

2020 4 2020 10
April 2020 and October 2020 Admission

Graduate School of Advanced Science and Engineering (Doctoral Course)
Application Guidebook

Mathematics Program

Physics Program

Earth and Planetary Systems Science Program



Contents

10

s.p. 7 (3.8(e4 (P)00

		739-8527 4 1 TEL (082)424-7518

- (1)
- (2)
- (3)

(4)

- (5)
- (6)

(7)

(8) []

(1) . (7) (8)

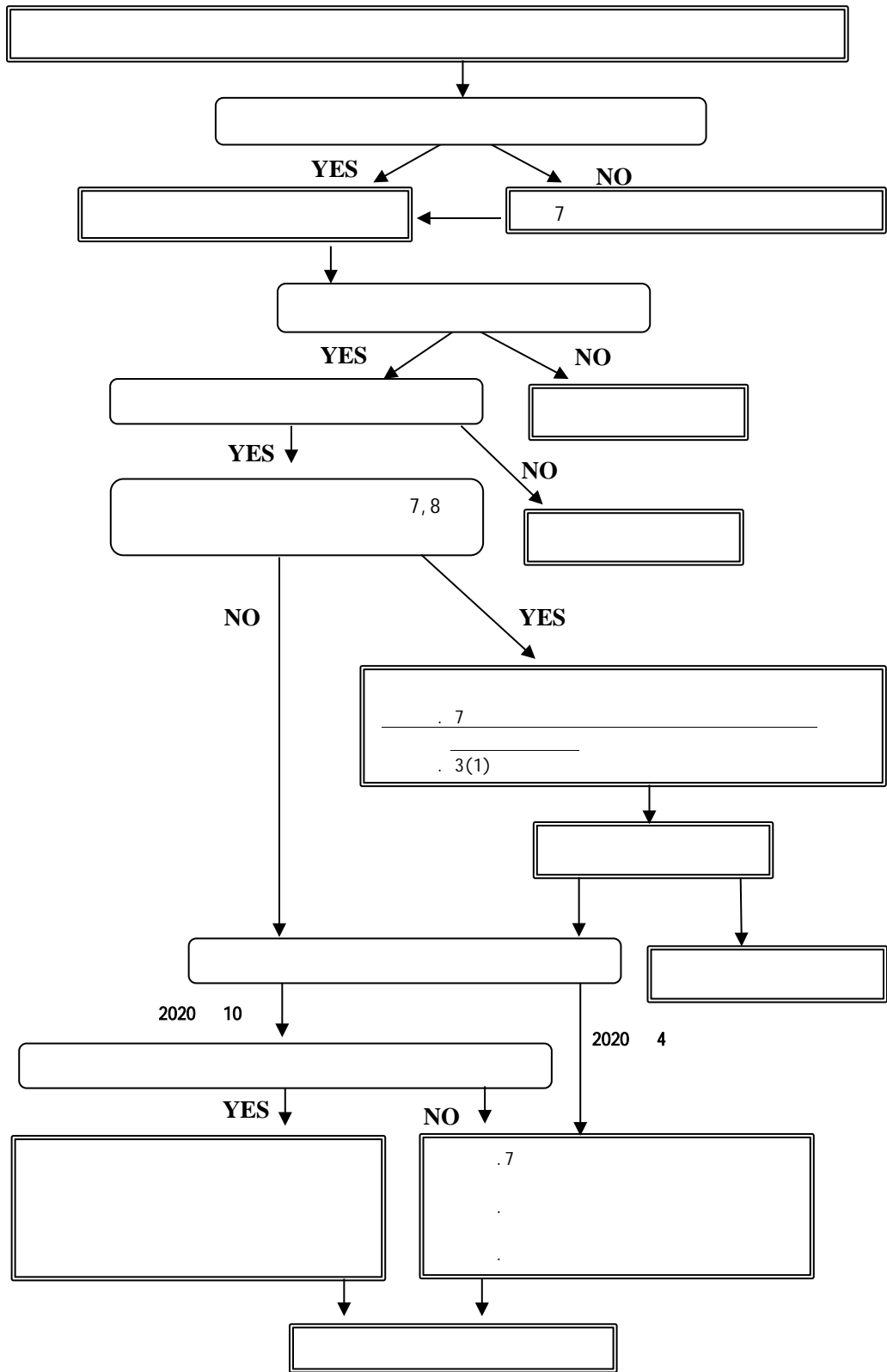
(2)

(3)

(6)

4

(1)



(2)

(3)

<http://seeds.office.hiroshima-u.ac.jp/search/index.html>
HP <https://www.hiroshima-u.ac.jp/adse/research>

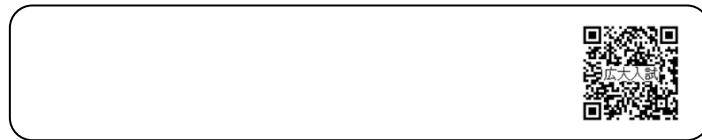
7

(4)

(5)

(5)

VISA MasterCard JCB AMERICAN EXPRESS



(6)

(6)

Program

The Division of Advanced Science and Engineering of Graduate School of Advanced Science and Engineering (Doctoral Course) in Hiroshima University consists of 14 programs that are listed in the table below with the numbers to .

This student application guidebook describes the schedule of the entrance examination and the method for selecting students for 4 programs that are listed under the numbers from (Program) to (Program).

You can obtain the document of the application guidebooks for the other programs in the location that is listed in the "contact / place of submission" section in the table.

		Inquiries, Submission
	Mathematics	Preparatory Office for the Establishment of Graduate School of Advanced Science and Engineering, Hiroshima University (Graduate Student Section, Student Support Office of Graduate School of Science) 1-3-1 Kagamiyama, Higashi-Hiroshima 739-8526, Japan Tel: +81-(0)82-424-7309, 4468
	Physics	
	Earth and Planetary Systems Science	
	Basic Chemistry	

Preparatory Office for the Establishment of Graduate School of Advanced Science and Engineering,

Graduate School of Advanced Science and Engineering Admission Policy

Each program's Admission Policy

Mathematics Program (Doctoral Course)

The Mathematics Program seeks students who have the following aspirations and motivation and have the basic academic abilities necessary for it:

A strong questing mind for the mathematical truth and an ambition to take a role as a leading researcher in specialized and/or cross-disciplinary research of mathematics;

The will to take the leading role in professional occupations such as researchers, educators, and highly-professional engineers in mathematics areas;

A zeal for establishing the "science for sustainable development" from a multifaceted perspective and for solving regional and international issues by acquiring wide range of academic knowledge and study skills for the academic areas related to mathematics as well as a wide range of intelligence; and

Common sense as a member of society and ethics required for researchers.

Doctoral

Earth and Planetary Systems Science Program (Doctoral Course)

The Earth and Planetary Systems Science Program seeks students who have the following aspirations and motivation and have the basic academic abilities necessary for it:

An ambition for acquiring advanced expertise and research techniques related to the earth and planetary systems science to take the leading role in advanced and prominent research activities;

The will to take the leading role in professional occupations such as researchers educators, and highly-professional engineers in earth and planetary science areas;

A zeal for establishing the "science for sustainable development" from a multifaceted perspective and for solving regional and international issues by acquiring knowledge and study skills for the academic areas related to mathematics as well as a wide range of intelligence, in addition to a strong curiosity about not only the earth and planetary systems science but also for the other areas; and

Common sense as a member of society and ethics required for researchers and highly-professional engineers.

Basic Chemistry Program (Doctoral Course)

The Basic Chemistry Program seeks students who have the following aspirations and motivation and have the basic academic abilities necessary for it:

An ambition for taking the leading role in advanced and prominent academic and inter-disciplinary research;

The will to take the leading role in professional occupations such as researchers and highly-professional engineers in basic chemistry areas;

A zeal for establishing the "science for sustainable development" from a multifaceted perspective and for solving regional and international issues by acquiring wide range of academic knowledge and study skills for the academic areas related to basic chemistry as well as a wide range of intelligence; and

Common sense as a member of society and ethics required for researchers and highly-professional engineers.

The Graduate School of Advanced Science and Engineering, Hiroshima University is accepting applicants currently residing outside Japan for admission to the Doctoral Course as indicated below for Academic Year 2020 (for April and October admission).

Number of students accepted

April and October admission, AY 2020

Program	Number of students accepted
Mathematics Program Physics Program Earth and Planetary Systems Science Program Basic Chemistry Program	Unspecified small number

Eligibility for application

Those who are of a non-Japanese nationality, live outside Japan at the time of application for admission, and to whom any of the following corresponds or is expected to correspond by the date of enrollment to HU are eligible for application:

- (1) have received, or are expected to receive a Master's degree or *senmonshoku gakui* (a first professional degree) or equivalent within Japan;
- (2) have received, or are expected to receive a Master's degree or a *senmonshoku gakui* (a first professional degree) or equivalent from a university outside Japan;
- (3) have received, or are expected to receive a Master's degree or a *senmonshoku gakui* (a first professional degree) or equivalent by studying in Japan a distance learning course provided by a university outside Japan;
- (4) have received, or are expected to receive a Master's degree or *senmonshoku gakui* (a first professional degree) or equivalent after completing a course of an overseas graduate school offered by an educational facility that is located in Japan but administered by the educational authorities of the said country, provided that the said course is specified by the Minister of Education, Culture, Sports, Science & Technology of Japan;
- (5) have received, or are expected to receive a Master's degree or equivalent from the United Nations University;
- (6) have been certified by the Minister of Education, Culture, Sports, Science & Technology of Japan (The Ministry's Notification # 118, issued on September 1, 1989);
- (7) have at least two years of research experience at a university/research institute after graduating from a university, and who are certified by the Graduate School of Science of Hiroshima University as having academic achievements equivalent to or higher than those who have a Master's degree;
- (8) will be at least 24 years old at the time of admission, and who are certified by the Graduate School of Science of Hiroshima University through individual eligibility screening as having academic achievements equivalent to those who have a Master's degree, *senmonshoku gakui* (a first professional degree) or equivalent.

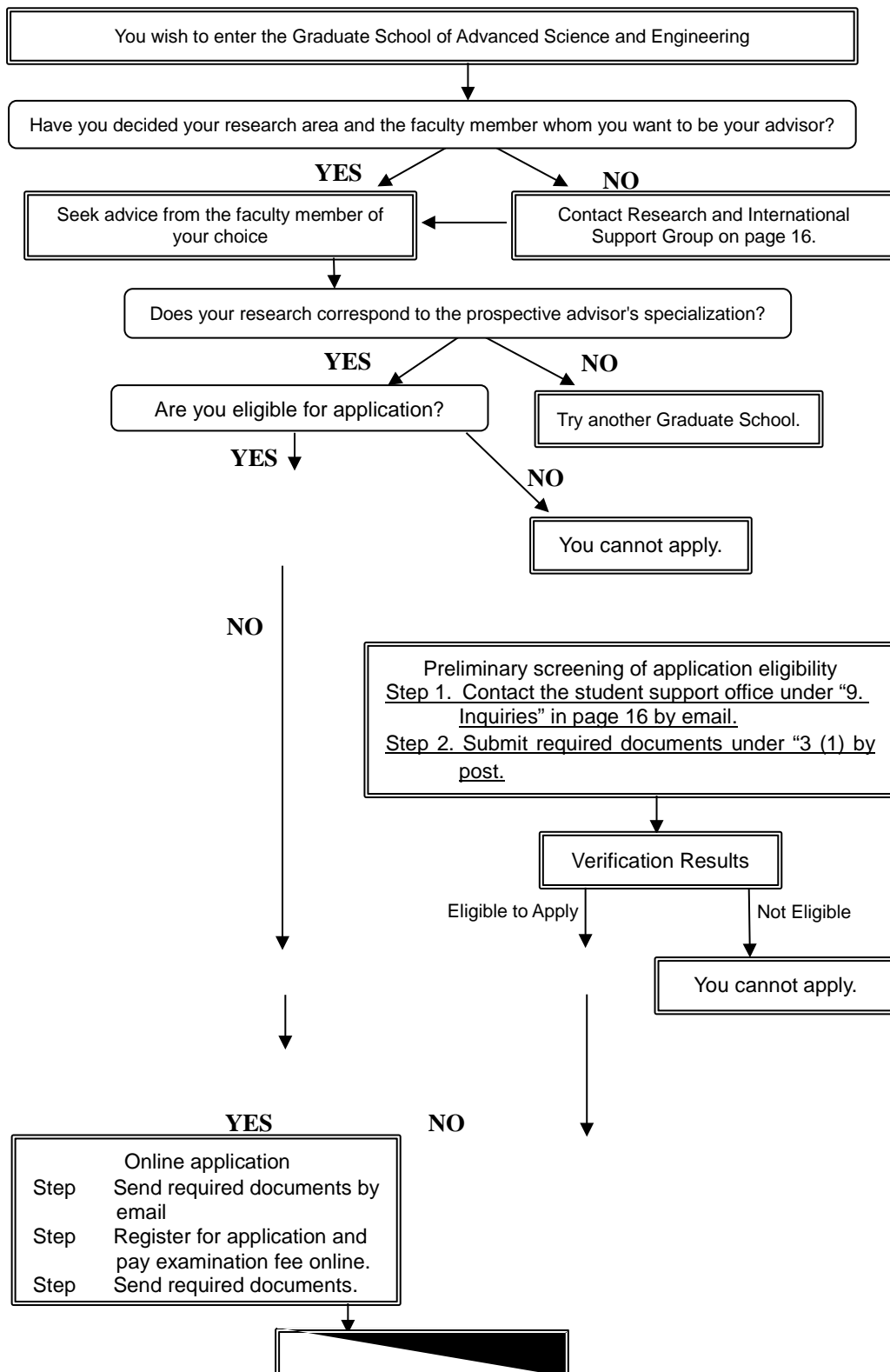
Verification of application eligibility

- (1) The Graduate School will verify application eligibility of those who wish to apply for admission in eligibility category (7) or (8) under “(2)Eligibility for application” Those who correspond to this description must submit the following documents to the Preparatory Office for the Establishment of Graduate School of Advanced Science and Engineering, Hiroshima University (Graduate Student Section, Student Support Office of Graduate School of Science), no later than Thursday, October 31, 2019 (for admission in April), Friday, January 31, 2020 (for admission in October).
 - a. Application form (provided) for eligibility verification
 - b. Survey sheet (provided) for eligibility verification
 - c. Statement of motivation for entering the Graduate School and research plan for the Doctoral Program (use A4-size sheets; free format)

- (2) Verification results will be notified to the applicants by e-mail or by post by Friday, November 29, 2019 (for admission in April), Friday, February 28, 2020 (for admission in October).
- (3) Those whose application eligibility is verified through this process need not submit “4. Research plan” stated among the “(6) Required documents” under “(2) Eligibility for application”

Application Procedure

(1) Application Flow Chart



(2) Period of acceptance of application

Admission in April **Tuesday, October 1, 2019 - Friday, December 6, 2019 at 17:00**

(6) Required documents

No.	Document	Description
1	Application form	Download the designated form from the website of the Graduate School of Advanced Science and Engineering, Hiroshima University. https://www.hiroshima-u.ac.jp/en/adse/admission
2	Academic performance record	Must be issued by the President of the University (or the Faculty Dean) concerned and submitted. Master's Degree Certificate, Diploma, or Certificate of Expected Graduation issued by the university in which an applicant is/was enrolled. If unavailable, a letter of expected graduation from the current supervisor.
3	Certificate of (expected) graduation	* Those who have graduated or expect to graduate from a university in China (not including Taiwan, Hong Kong and Macau) must submit _____ and _____, as well as the following documents obtainable from the China Higher Education

(7) Submission of required documents

Send all the application documents listed in (6) above together to the address below:

Preparatory Office for the Establishment of Graduate School of Advanced Science and Engineering, Hiroshima University (Graduate Student Section, Student Support Office of Graduate School of Science)

1-3-1 Kagamiyama, Higashi-Hiroshima City 739-8526, Japan

Tel: +81-(0)82-424-7309

Pre-arrangements for special needs applicants

Those who have disabilities and require special consideration for taking the examinations and/or pursuing the graduate program must contact (by submitting a statement of information as described below in free format) the Preparatory Office for the Establishment of Graduate School of Advanced Science and Engineering, Hiroshima University (Graduate Student Section, Student Support Office of Graduate School of Science) to enable the necessary arrangements.

Information to include in the statement

	Items of information	Remarks
①	Applicant's name, address, and contact telephone number	
②	Name of the last school attended	
③	Department and Graduate School applied for	
④	Type and degree of disability	Attach the treating physician's diagnosis or certificate (copy) of disability

⑤

Inquiries

Preparatory Office for the Establishment of Graduate School of Advanced Science and Engineering, Hiroshima University (Graduate Student Section, Student Support Office of Graduate School of Science)

1-3-1 Kagamiyama, Higashi-Hiroshima City 739-8526, Japan

Tel: +81-(0)82-424-7309 FAX: +81-(0)82-424-2464

E-mail ri-gaku-sien@office.hiroshima-u.ac.jp

Inquiries by phone are not permitted

10 Others

Smoking will be prohibited entirely in all HU campuses from January, 2020.

The Kasumi Campus has been smoke-free since April, 2018.