

**2020    4                      2020    10**  
**April 2020 and October 2020 Admission**

Graduate School of Advanced Science and Engineering (Master's Course)  
**Application Guidebook**

Mathematics Program

Physics Program

Earth and Planetary Systems Science Program

Basic Chemistry Program

**Special Selection for International Students**  
**[ Residing outside Japan ]**

**Special Selection for International Students**  
**[ Residing outside Japan (Overseas Bases) ]**

**September 2019**







---

--	--

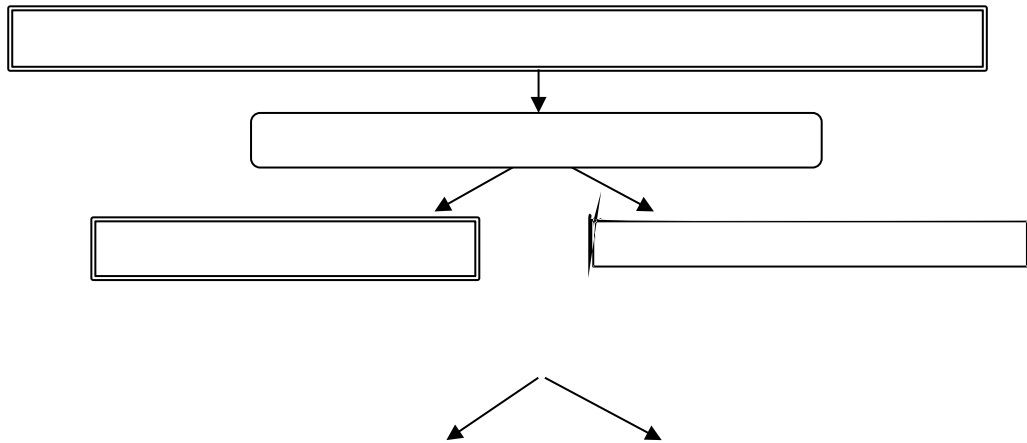




1.


2.

4.





<http://seeds.office.hiroshima-u.ac.jp/search/index.html>  
<https://www.hiroshima-u.ac.jp/adse/research>

---

VISA MasterCard JCB AMERICAN EXPRESS



		<p>毕业证书" " 硕 证书</p> <p>历证书查询</p> <p><a href="http://www.chsi.com.cn/xlcx/bgys.jsp">http://www.chsi.com.cn/xlcx/bgys.jsp</a></p> <p>...</p> <p>历证书电 备</p> <p>...</p> <p>线验证报</p>
		TOEFL® TOEIC® CET
		<div>GRE</div> <div> <div>(Subject Test, General Test)</div> <div>Subject Test</div> </div>
		<div>Subject Test</div> <div>Physics</div> <div>Mathematics,</div> <div>Chemistry,</div> <div>Biology</div>
		Physics



--	--	--


<https://www.hiroshima-u.ac.jp/adse/research>



The Division of Advanced Science and Engineering of Graduate School of Advanced Science and Engineering (Master Course) in Hiroshima University consists of 14 programs that are listed in the table below with the numbers to .

This student application guidebook describes the schedule of the entrance examination and the method for selecting students for 4 programs that are listed under the numbers from ( Program) to ( Program).

You can obtain the document of the application guidebooks for the other programs in the location that is listed in the "contact / place of submission" section in the table.

		Inquiries, Submission
Advanced Science and Engineering		Preparatory Office for the Establishment of Graduate School of Advanced Science and Engineering, Hiroshima University (Graduate Student Section, Student Support Office of Graduate School of Science) 1-3-1 Kagamiyama, Higashi-Hiroshima 739-8526, Japan Tel: +81-(0)82-424-7309, 4468
		Preparatory Office for the Establishment of Graduate School of Advanced Science and Engineering, Hiroshima University (Graduate Student Section, Student Support Office of Graduate School of Engineering) 1-4-1 Kagamiyama, Higashi-Hiroshima 739-8527, Japan Tel: +81-(0)82-424-7518
		Preparatory Office for the Establishment of Graduate School of Advanced Science and Engineering, Hiroshima University (Graduate Student Section, Student Support Office of Graduate School of Advanced Sciences of Matter) 1-3-1 Kagamiyama, Higashi-Hiroshima 739-8530, Japan Tel: +81-(0)82-424-7008,7009
		Preparatory Office for the Establishment of Graduate School of Advanced Science and Engineering, Hiroshima University (Graduate Student Section, Student Support Office of Graduate School of Integrated Arts and Sciences) 1-7-1 Kagamiyama, Higashi-Hiroshima 739-8521, Japan Tel: +81-(0)82-424-6318
		Preparatory Office for the Establishment of Graduate School of Advanced Science and Engineering, Hiroshima University (Graduate Student Section, Student Support Office of Graduate School of International Development and Cooperation) 1-5-1 Kagamiyama, Higashi-Hiroshima 739-8529, Japan Tel: +81-(0)82-424-4680



#### Mathematics Program (Master's Course)

The Mathematics Program seeks students who have the following aspirations and motivation and have the basic academic abilities necessary for it:

- A strong questing mind for the mathematical truth and an ambition to make a progress in specialized and/or inter-disciplinary research of mathematics;

- The will to be engaged in professional occupations such as researchers, educators, and engineers in mathematics areas;

- A zeal for establishing the "science for sustainable development" from a multifaceted perspective and for solving regional and international issues by acquiring knowledge and study skills for the academic areas related to mathematics as well as a wide range of intelligence; and

- Common sense and ethics required for a member of society.

#### Earth and Planetary Systems Science Program (Master's Course)

The Earth and Planetary Systems Science Program seeks students who have the following aspirations and motivation and have the basic academic abilities necessary for it:

An ambition for acquiring advanced expertise and research techniques related to the earth and planetary systems science;

The will to be engaged in professional occupations such as researchers, educators, and engineers in areas of the earth and planetary systems science;

A zeal for establishing the "science for sustainable development" from a multifaceted perspective and for solving regional and international issues by acquiring knowledge and study skills for the academic areas related to mathematics as well as a wide range of intelligence, in addition to a strong curiosity about not only the earth and planetary systems science but also for the other areas; and

Common sense and ethics required for a member of society.

#### Basic Chemistry Program (Master's Course)

The Basic Chemistry Program seeks students who have the following aspirations and motivation and have the basic academic abilities necessary for it:

Basic knowledge and ability of comprehension, examination, and presentation regarding the basic chemistry and an ambition for taking part in the academic and/or inter-disciplinary research;

The will to be engaged in professional occupations such as researchers and engineers in basic chemistry areas;

A zeal for establishing the "science for sustainable development" from a multifaceted perspective and for solving regional and international issues by acquiring knowledge and study skills for the academic areas related to basic chemistry as well as a wide range of intelligence; and

Common sense and ethics required for a member of society.

The Graduate School of Advanced Science and Engineering, Hiroshima University is accepting applicants currently residing outside Japan for admission to the Master's Course as indicated below for Academic Year 2020 (for April and October admission).

Those applicants who wish to apply for Special selection for International students (the resident outside Japan) at Overseas Bases in December, 2019, please refer to page 23.

## **I. Special Selection for International Students [ Residing outside Japan]**

### **Number of Students Accepted and Examination Venues**

April and October admission, AY 2020

Program	Number of students accepted	Examination venues
Mathematics Program Physics Program Earth and Planetary Systems Science Program Basic Chemistry Program	Unspecified small number	Examinations will be held at one of the following venues on a date and at a time specified later by Hiroshima University: Graduate School of , HU HU Office Other specified venue outside Japan

**These programs may not accept applicants, therefore please contact Preparatory Office for the Establishment of Graduate School of Advanced Science and Engineering, Hiroshima University (Graduate Student Section, Student Support Office of Graduate School of Science) before you apply.**

### **Eligibility for Application**

Those who are of a non-Japanese nationality, live outside Japan at the time of application for admission, and to whom any of the following corresponds or is expected to correspond by the date of enrollment to HU are eligible for application:

- (1) Graduate of a university;
- (2) Holders of academic degrees conferred by the
- (3) Those who have completed 16 years of formal school education outside Japan;
- (4) Those who have completed 16 years of formal school education in the educational system of a foreign country by completing in Japan a correspondence course operated by an educational establishment instituted in the foreign country;
- (5) Those who have completed an applicable curriculum at an educational establishment that is located in Japan, is recognized as offering undergraduate courses in the educational system of a foreign country (only educational establishments whose graduates are recognized as having completed 16 years of formal school education in the educational system of that country), and is separately so designated by the Minister of Education, Culture, Sports, Science and Technology of Japan;
- (6) Persons who have been conferred, or expect to be conferred, a degree equivalent to a bachelor's degree through attending an overseas university or other overseas school (limited to those whose education and research activities have been evaluated by persons who have been certified by the relevant country's government or a related institution, or have been separately designated by the Ministry of Education, Culture, Sports, Science and Technology as being equivalent to such) and graduated from a program that requires 3 or more years to complete (Includes graduating from a program implemented by the relevant overseas school while living in Japan through distance learning, as well as graduating from a program implemented by an educational facility established with the relevant overseas country's school education system and has received the designation mentioned above).
- (7) Those who have completed, on or after the date specified by the Minister of Education, Culture, Sports, Science and Technology of Japan, a specialized curriculum of a vocational school (only vocational schools whose period of education is four years or longer and that fulfill other criteria specified by the same Minister) that is recognized as such by the Minister;

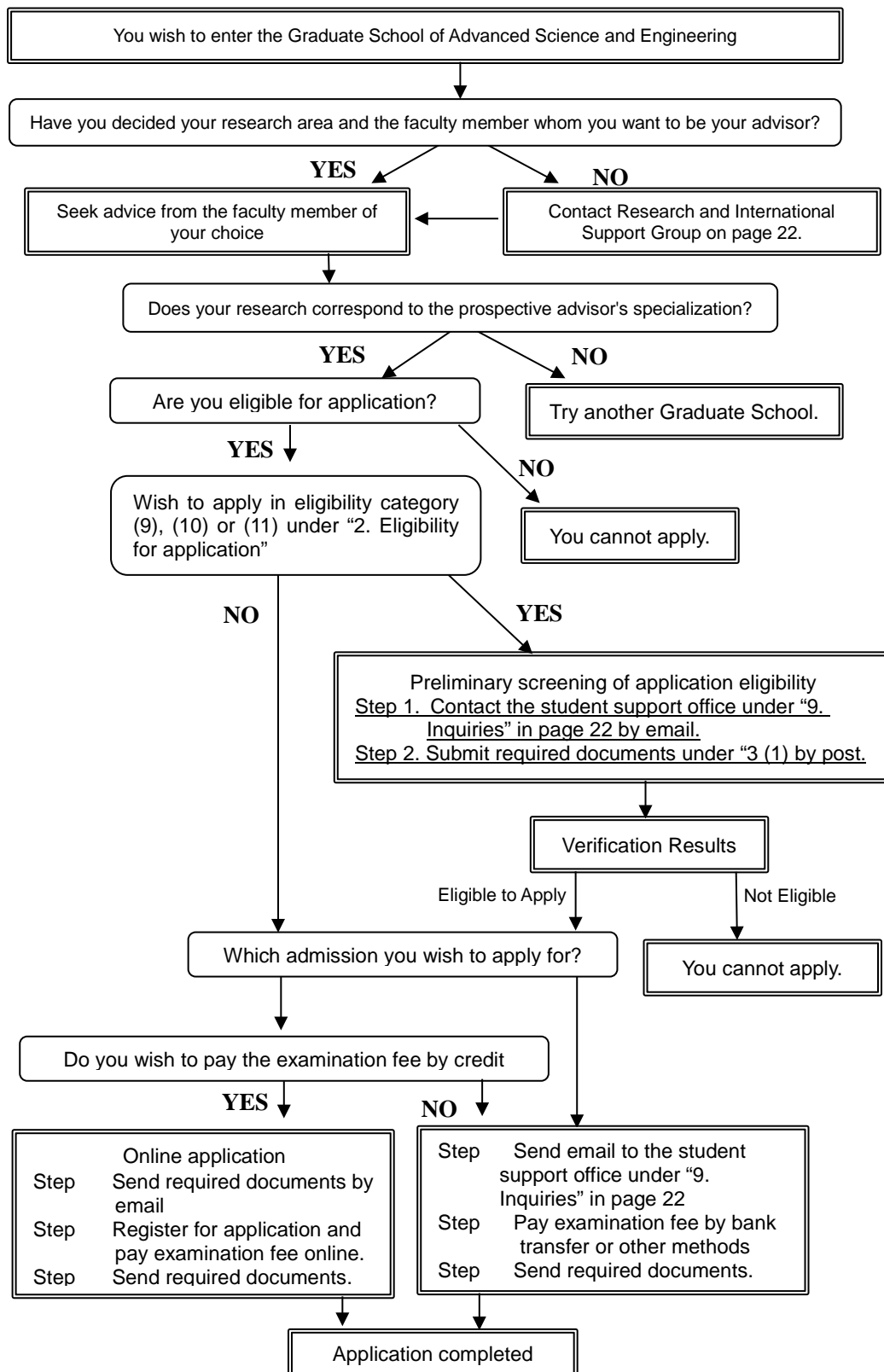
- (8) Have been certified by the Minister of Education, Culture, Sports, Science & Technology of Japan
- (9) Those who entered a graduate school in compliance with the provisions of Article 102, Item 2 of the School Education Law of Japan and who are recognized by the relevant Graduate School of Hiroshima University as having academic ability appropriate for receiving postgraduate education;
- (10) Those who has attained the age of 22 years and has been recognized through a separate admission screening at This Graduate School as having academic ability equal to, or greater than, a person graduated from a university;
- (11) Those who were enrolled in a university for a period of three years or longer (including those recognized by the Minister of Education, Culture, Sports, Science and Technology of Japan as being equivalent thereto) and who have demonstrated excellent academic performance and obtained credits in subjects designated by the relevant Graduate School of Hiroshima University.

## **Verification of Application Eligibility**

- (1) The Graduate School will verify application eligibility of those who wish to apply for admission in eligibility category (9), (10) or (11) under “2. Eligibility for Application” Those who correspond to this description must submit the following documents to the Preparatory Office for the Establishment of Graduate School of Advanced Science and Engineering, Hiroshima University (Graduate Student Section, Student Support Office of Graduate School of Science), no later than Thursday, October 31, 2019 (for admission in April), Friday, January 31, 2020 (for admission in October).
  - a. Application form (provided) for eligibility verification
  - b. Survey sheet (provided) for eligibility verification
  - c. Statement of motivation for entering the Graduate School and research plan for the Master's Program (use A4-size sheets; free format)
- (2) Verification results will be notified to the applicants by e-mail or by post by Friday, November 29, 2019 (for admission in April), Friday, February 28, 2020 (for admission in October).
- (3) Those whose application eligibility is verified through this process need not submit “4. Research plan” stated among the “(6) Required documents” under “**4. Application Procedure**”.

# Application Procedure

## (1) Application Flow Chart



## (2) Period of acceptance of application

Admission in April **Tuesday, October 1, 2019 - Friday, January 10, 2020 at 17:00**  
(Late applications will not be accepted) (Japan time)

Admission in October **Wednesday, April 1, 2020 - Friday, June 12, 2020 at 17:00**  
(Late applications will not be accepted) (Japan time)

## (3) Contacting the HU faculty

Applicants must contact by e-mail a member of the Hiroshima University faculty in the research area in which they wish to pursue their studies and research before submitting their application documents to receive advice regarding their application. The research areas and contact information for the HU faculty are available under "Profiles of Faculty and Research Scholars in Hiroshima University" (<http://seeds.office.hiroshima-u.ac.jp/search/index.html?lang=en>) and the Graduate School of Advanced Science and Engineering website (<https://www.hiroshima-u.ac.jp/en/adse/research>).

Please contact Student Support Office (Graduate Program) on page 27 if you do not know of any faculty member whose specialization corresponds to your research interest.

## (4) Examination Fee

30,000 yen (payable in Japanese yen only)

Refer to "(5) Application Procedure" for the method of payment.

\*International students receiving Japanese government scholarship grants are exempt from the examination fee.

\*The examination fee, once paid, will not be refunded under any circumstances.

## (5) Application Procedure

The application procedure differs depending on whether or not you are paying the examination fee by credit card.

### **Online application**(Only available for Admission in October 2020)

Use the online application if you can pay the examination fee by credit card (VISA, MasterCard, JCB or AMERICAN EXPRESS). To do so, first register online by entering required information on the form. You can access the online application page via the entrance examination page of the Hiroshima University website.

Hiroshima University Entrance Examination Information Web Site  
<http://en.hiroshima-u.jp/top/nyugaku>



### Notes

- 1) The name of credit card account need not be in the name of the applicant.
- 2) The online application process requires an account; account information will be provided to applicants once their application documents sent by e-mail are confirmed.
- 3) The online application process enables applicants to register and pay the examination fee online; however, this does not complete the application process. Be sure to send the required application documents by post, as indicated below (6), by the closing date.

### **Conventional application**

Send by post the required application documents, as indicated below (6), by the closing date. The method of payment of the examination fee will be separately notified.

## (6)Required documents

No.	Document	Description
1	Application form	Download the designated form from the website of the Graduate School of Advanced Science and Engineering, Hiroshima University. <a href="https://www.hiroshima-u.ac.jp/en/adse/admission">https://www.hiroshima-u.ac.jp/en/adse/admission</a>
2	Academic performance record	Must be issued by the President of the University (or the Faculty Dean) concerned and submitted.
3	Certificate of (expected) graduation	<p>Must be issued by the President of the University (or the Faculty Dean).</p> <p>* Those who have graduated or expect to graduate from a university in China (not including Taiwan, Hong Kong and Macau) must submit and , as well as the following documents obtainable from the China Higher Education Student Information and Career Center's verification system ( , in Chinese <a href="http://www.chsi.com.cn/xlcx/bgys.jsp">http://www.chsi.com.cn/xlcx/bgys.jsp</a>):</p> <ul style="list-style-type: none"> <li>• Graduates:</li> <li>• Students expecting to graduate:</li> </ul> <p>Make sure that the online verification remains valid at least for the next 3 months at the time of submission of the application.</p>
4	Research plan	Download the designated form from the website of the Graduate School of Advanced Science and Engineering, Hiroshima University.
5	Letters of recommendation	<p>Download the designated forms from the website of the Graduate School of Advanced Science and Engineering, Hiroshima University for the following <b>two types</b> of letters of recommendation.</p> <ol style="list-style-type: none"> <li>1. Letter signed by the head of an organization to which the applicant belongs.</li> <li>2. Letter(s) signed by one or more persons who instruct or instructed the applicant in academic research</li> </ol>
6	English test score	A copy of the score sheet from a standard English proficiency test such as TOEFL®, TOEIC® or CET.
7	The Graduate Record Examination(GRE) (Optional)	<p>Program of Physics, and Earth and Planetary Systems Science will evaluate score of GRE (General or Subject). If you have score, please submit it. About subject score, it is specified as follows.</p> <p>Program of Physics: Physics</p> <p>Program of Earth and Planetary Systems Science: Physics, Mathematics, Chemistry, or Biology</p>

### Notes:

1. Documents written in a language other than Japanese or English must be accompanied by a Japanese or English translation.
2. Documents serving as certificates must be originals or certified copies. Uncertified copies will not be accepted.
3. The Graduate School will cancel successful examination results of applicants or admission of students in whose application documents falsification or misrepresentation is found after the examinations or admission.
4. The Graduate School will cancel admission of students who apply as students expecting to graduate (or complete the required course) and fail to graduate (or complete the course) by the day of admission.

## (7) Submission of required documents

Send all the application documents listed in (6) above together to the address below:

Preparatory Office for the Establishment of Graduate School of Advanced Science and Engineering, Hiroshima University (Graduate Student Section, Student Support Office of Graduate School of Science)

1-3-1 Kagamiyama, Higashi-Hiroshima City 739-8526, Japan

Tel: +81-(0)82-424-7309

## Pre-arrangements for Special Needs Applicants

Those who have disabilities and require special consideration for taking the examinations and/or pursuing the graduate program must contact (by submitting a statement of information as described below in free format) the Preparatory Office for the Establishment of Graduate School of Advanced Science and Engineering, Hiroshima University (Graduate Student Section, Student Support Office of Graduate School of Science) to enable the necessary arrangements.

### Information to include in the statement

	Items of information	Remarks
	Applicant's name, address, and contact telephone number	
	Name of the last school attended	
	Department and Graduate School applied for	
	Type and degree of disability	Attach the treating physician's diagnosis or certificate (copy) of disability
	Requested consideration regarding the examinations	
	Requested consideration during enrollment in the Graduate School	



## Admission Fee and Tuition

Admission fee: 282,000 yen

Tuition: 535,800 yen (267,900 yen per semester)

Notes:

- (1) Admission fee and tuition, once paid, will not be returned under any circumstances.
- (2) The above figures are valid as of April 2019 and are subject to change without prior notice.
- (3) The University has a system to either waive the entrance fee and tuition, or discount the amount by up to 50% for students in financial difficulties, provided that they have an excellent academic record and/or special reasons to seek such assistance. However, there is no guarantee that this system will be applicable to individual student.

## Inquiries

Preparatory Office for the Establishment of Graduate School of Advanced Science and Engineering, Hiroshima University (Graduate Student Section, Student Support Office of Graduate School of Science)

1-3-1 Kagamiyama, Higashi-Hiroshima City 739-8526, Japan

Tel: +81-(0)82-424-7309 FAX: +81-(0)82-424-2464

E-mail [ri-gaku-sien@office.hiroshima-u.ac.jp](mailto:ri-gaku-sien@office.hiroshima-u.ac.jp)

Inquiries by phone are not permitted

## 10 Others

Smoking will be prohibited entirely in all HU campuses from January, 2020.

The Kasumi Campus has been smoke-free since April, 2018.

## II. Special Selection for International Students [ Residing outside Japan (Overseas Bases) ]

### Application Guideline

The Program of Mathematics, Earth and Planetary Systems Science and the Program of Basic Chemistry of the Graduate School of Advanced Science and Engineering, Hiroshima University are currently inviting applications from international students for the Master's Course to start in April or October 2020.

The screening process comprises several steps. First, as a preliminary screening, up to approximately 30 applicants will be selected through a review of submitted application documents. The selected applicants will be invited to a briefing session. On the same day, following the briefing session and aptitude test (written examinations) will be given to the selected applicants. Applicants for the Program of Mathematics must take a mathematics test; Earth and Planetary Systems Science must take a Earth and Planetary Science test; applicants for the Program of Basic Chemistry must take a Chemistry test. The aptitude test (written examinations) can be taken in either English or Japanese. On the following day, interviews will be conducted for applicants who achieve the highest scores in the examinations.

The applicants who pass the interview will be required to hold discussions with faculty members by e-mail or other means. From among faculty members of the University, the applicants can choose members responsible for the academic field in which they intend to major and contact those members. After discussions, applicants who pass this final screening will receive a letter of recommendation from the faculty members concerned, which the applicants must submit along with the application form for admission.

#### Schedule until enrollment

2019	November	19 to 26	Application period for the Briefing Session
		29	Invitations to the Briefing Session will be distributed
	December	12	Briefing Session and aptitude test (Written Examination)
		13	Aptitude test (Interview)
		24	Announcement of aptitude test (Written Examination Interview) results
		24	Discussion period
		24	[Admission in April] Application period for admission By January 10, 2020
2020	January	29	[Admission in April] Announcement of admission
			[Admission in April] Arrival in Hiroshima, enrollment procedures
		1	[Admission in April] Enrollment
	July	1	[Admission in October] Application period for admission By June 12, 2020
		9	[Admission in October] Announcement of admission
			[Admission in October] Arrival in Hiroshima, enrollment procedures
	September		
	October	1	[Admission in October] Enrollment

## Number of International Students to Be Accepted

Mathematics program: up to 3.

Earth and Planetary Systems Science program: up to 3.

Basic Chemistry program: up to 3.

## Eligibility for Application

Those who are of a non-Japanese nationality, live outside Japan at the time of application for admission, and to whom any of the following corresponds or is expected to correspond by the date of enrollment to HU, are eligible for application:

- (1) Graduate of a university;
- (2) Holders of academic degrees conferred by the National Institution for Academic Degrees and Quality Enhancement of Higher Education in compliance with the provisions of Article 104, Item 7 of the School Education Law of Japan.
- (3) Those who have completed 16 years of formal school education outside Japan;
- (4) Those who have completed 16 years of formal school education in the educational system of a foreign country by completing in Japan a correspondence course operated by an educational establishment instituted in the foreign country;
- (5) Those who have completed an applicable curriculum at an educational establishment that is located in Japan, and are eligible for application.

## **Briefing Session**

A briefing session will be held for prospective applicants for the Master's Course of the Program of

(3) Documents to submit (All documents should be written in English unless otherwise specified.)

Documents	Remarks
Application Form for Participation to the Briefing Session	Use the official form. An identification photo taken within the last three months must be attached in the upper right corner of the form.
Grade Transcript	Official document(s) issued by the institution (faculty/college) from which you have graduated or are expected to graduate.
Certificate of (Expected) Graduation	Official document(s) issued by the institution (faculty/college) from which you have graduated or are expected to graduate.  Those who have graduated or expect to graduate from a university in China (not including Taiwan, Hong Kong and Macau) must submit _____ and _____, as well as the following documents obtainable from the China Higher Education Student Information and Career Center's verification system ( _____ ), in Chinese <a href="http://www.chsi.com.cn/xlcx/bgys.jsp">http://www.chsi.com.cn/xlcx/bgys.jsp</a> ):  <ul style="list-style-type: none"> <li>• Graduates:</li> <li>• Students expecting to graduate:</li> </ul> <p>Make sure that the online verification remains valid at least for the next 3 months at the time of submission of the application.</p>
Grade Certificate(s) for Foreign Language Tests	A copy of the score sheet from a standard English proficiency test such as TOEFL ®, TOEIC ® or CET.
Letter of Recommendation	Use the official form, which can be downloaded from the website of the Graduate School of Advanced Science and Engineering website. Ask the supervisor for your Bachelor's thesis or the head of your department to fill out the form. <a href="https://www.hiroshima-u.ac.jp/en/adse/admission">https://www.hiroshima-u.ac.jp/en/adse/admission</a>
Motivation Letter	Use the official form, which can be downloaded from the website of the Graduate School of Science.

Note 1: The Official documents written in languages other than English or Japanese must be translated into English or Japanese, and both the original and the translated documents must be submitted.

Note 2: The University will not return any submitted documents.

Note 3: Applicants who can not submit any required documents during the application period are required to inform to Preparatory Office for the Establishment of Graduate School of Advanced Science and Engineering, Hiroshima University (Graduate Student Section, Student Support Office of Graduate School of Science).

Note 4: Applicants who pass the final screening will be required to submit additional documents.

- (4) Invitations for the briefing session (admission free) will be sent around November 29, 2019. If there are more than 30 applicants, however, 30 will be selected through a review of submitted application documents.
- (5) Only applicants for the Program of Chemistry, results of the aptitude test (written examinations) will be exhibited at 5 pm, December 12, 2019, on a bulletin board at the Beijing Research Center. Only applicants who passed the aptitude test can take interview.
- (6) Results of the interview will be announced around December 24, 2019. The University will send application forms for admission and other forms via e-mail to applicants who pass the interview. Applicants who pass the interview must contact faculty members responsible for the academic field in which they intend to major. Between December 25, 2019 to January 10, 2020, applicants must hold discussions with the faculty members via e-mail or other means, so as to obtain the acceptance from them.

- (7) Applicants who obtain the acceptance are required to follow the application procedures for admission, by submitting the application forms for admission and other documents specified below.

## **Application Procedures for Admission**

### **Application Procedure**

Submit the required documents online and pay the examination fee 30,000 yen.

If you wish to apply for the admission in April, send required documents listed below by post.

The applicant shall be notify the detailed procedure when the result will be informed.

Document

## Contact Information

Preparatory Office for the Establishment of Graduate School of Advanced Science and Engineering, Hiroshima University (Graduate Student Section, Student Support Office of Graduate School of Science)

1-3-1 Kagamiyama, Higashi-Hiroshima City 739-8526, Japan

Tel: +81-(0)82-424-7309    FAX: +81-(0)82-424-2464

E-mail [ri-gaku-sien@office.hiroshima-u.ac.jp](mailto:ri-gaku-sien@office.hiroshima-u.ac.jp)

Inquiries by phone are not accepted. Please contact by email.

## Others

Smoking will be prohibited entirely in all HU campuses from January, 2020.

The Kasumi Campus has been smoke-free since April, 2018.