

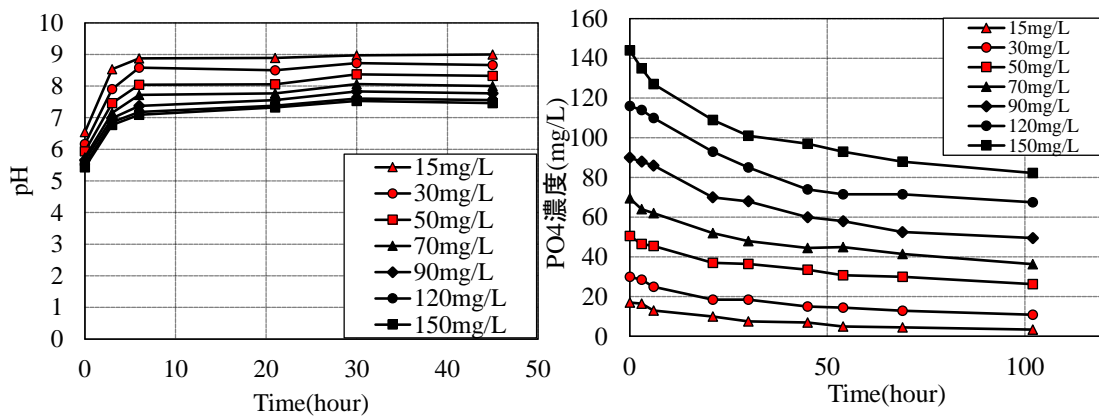
n 1 10

q: mg/L

C(mg/L) K_f

n

$$\text{Log}q = 1/n \log C + \log K_f$$



(b) pH

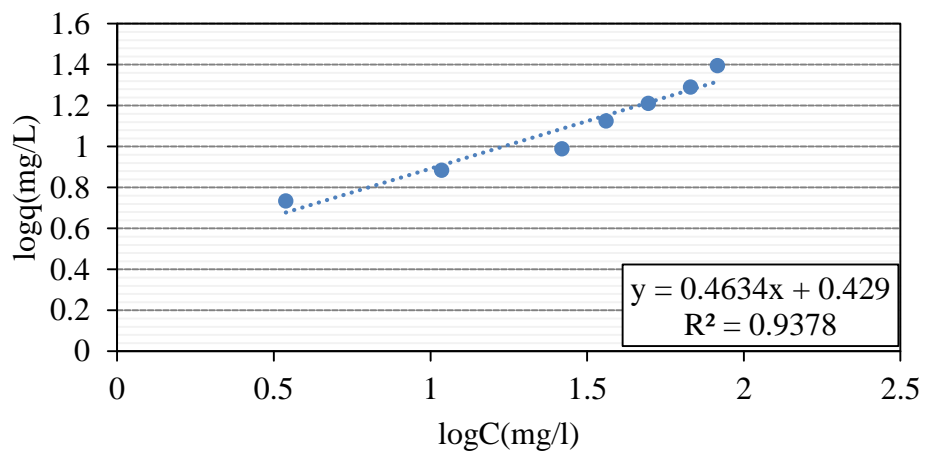


Fig. 1 $\text{Ca}^{2+} + 2\text{OH}^-$, pH $\text{CaO} + \text{H}_2\text{O}$ $\text{Ca}(\text{OH})_2\text{aq}$ $\text{Ca}(\text{OH})_2\text{aq}$
 pH $(2\text{PO}_4^{3-} + 3\text{Ca}^{2+} \rightarrow \text{Ca}_3(\text{PO}_4)_2)$
 Fig. 2 C(mg/L) K_f n n 1 10 q: mg/g
 n=2.158 $K_f=2.685$ n
 n=1.308, $K_f=9.58$
 GCA

7.

Marine environmental system laboratory
