

---

,

, 3 2 ,/ 3 ,1

,

, 3 2 ,/  
, 3 2 ,1 , 3 3 ,/  
, 2 3 ,1

4 h p l m n M hm G f m  
4 f h hi m . Goe g 3 J h ha G f m  
4 Jli n Niha F

,

NA

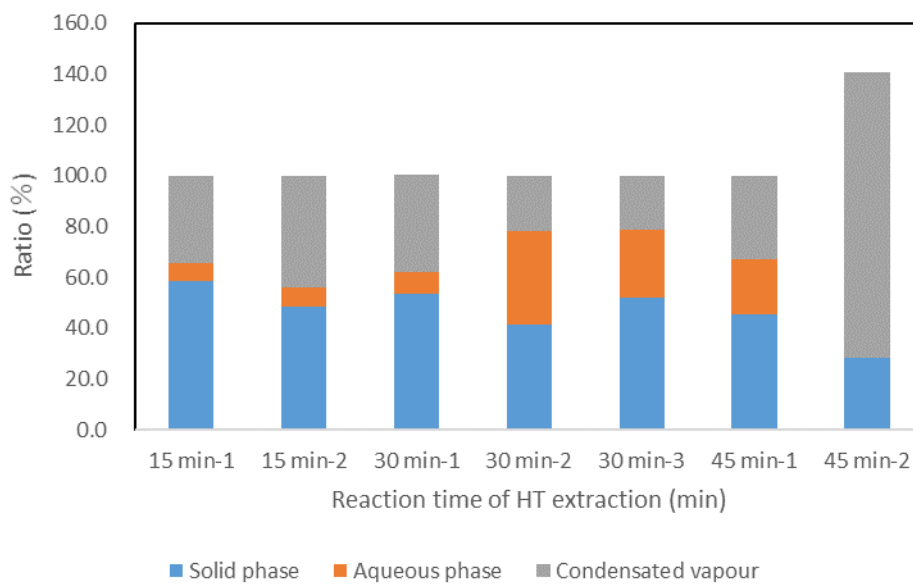
N f

---

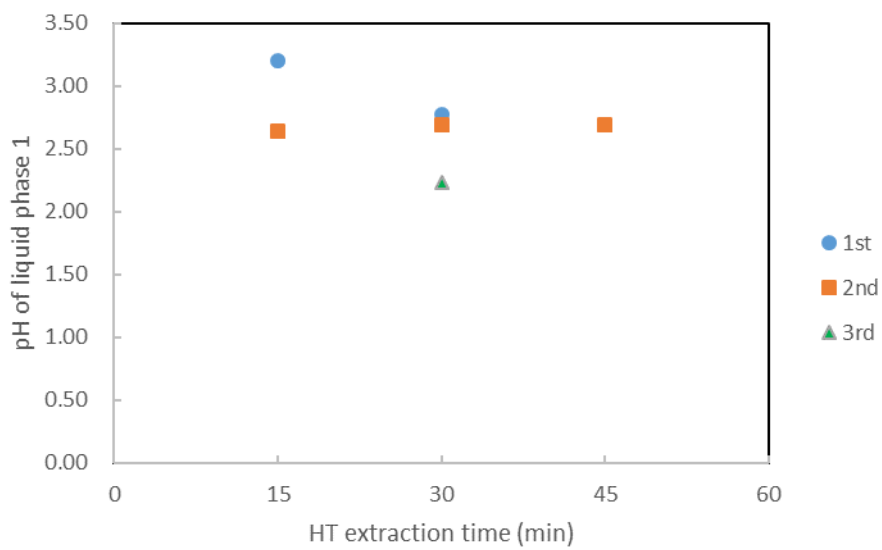
**Table 1**

	1st step	2nd step
Reaction	HT extraction	HTC
Feedstock	Chlorella vulgaris (2 g)	Solid phase from HT extraction
Temperature (°C)	160	210
Reaction time (min)	15, 30, 45	30

a .



**Fig. 1**



**Fig. 2**

pH

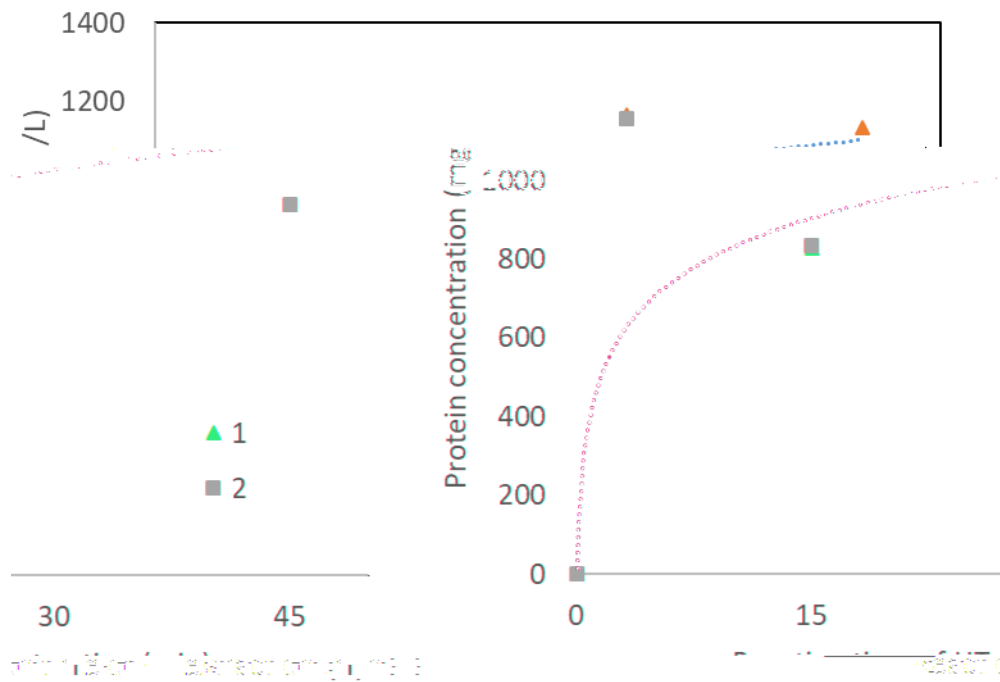


Fig. 3

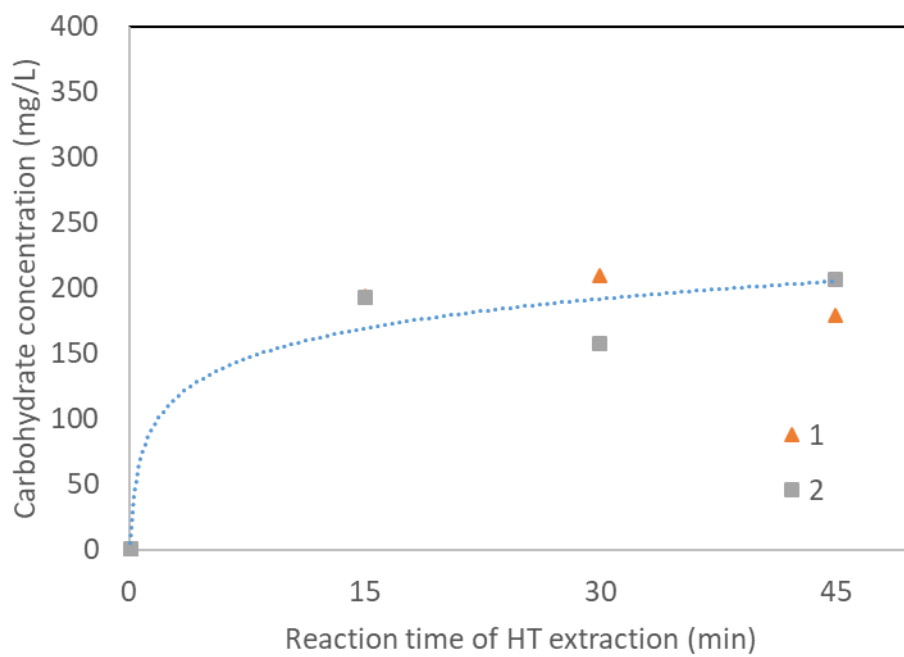


Fig. 4

---

, 0. ,

/ g h

,

a / 2

---



---

a / g h g h

b , 02 , 3/

./ g h

/ ga F J

, ga F H , /

,

.

---