



2020 1 24

4

2020 1 23

SN2006gy

la

Anders Jerkstrand

10

SN2006gy

2000

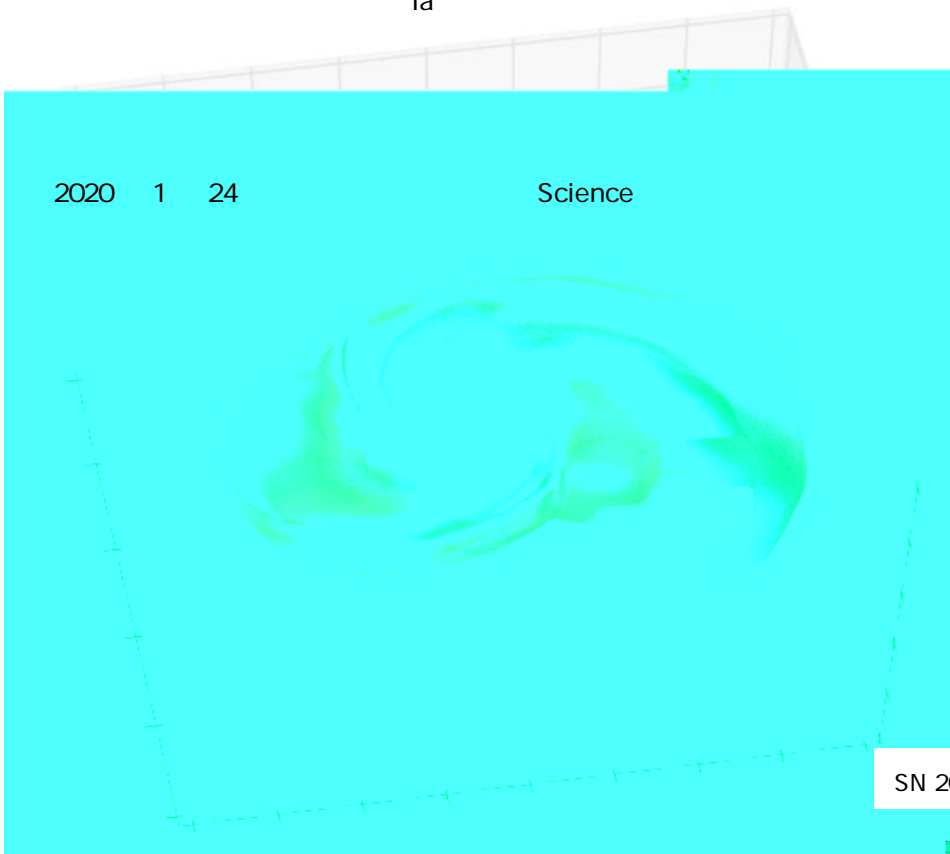
SN2006gy

la

la

2020 1 24

Science



SN 2006gy

2000

10^{44}

10^{44}

10

1-10%

IIIn

II

I

II

10%

II

10

SN2006gy

2006

II

10

Anders Jerkstrand

SN 2006gy

400

SN2006gy

400

FOCAS Faint Object

Camera and Spectrograph

SN2006gy

8000-8500

1500 km s⁻¹

10-15%

SN2006gy

10

0.3

SN2006gy

0.1

SN2006gy

Ia

Ia

~10,000 km s⁻¹

100

10,000 km s⁻¹

1,500 km s⁻¹

300

1500 km s⁻¹

Ia

SN2006gy

Ia

IIn

SN2006gy

-10

1,500 km s⁻¹

10⁴⁴

200-300

SN2006gy

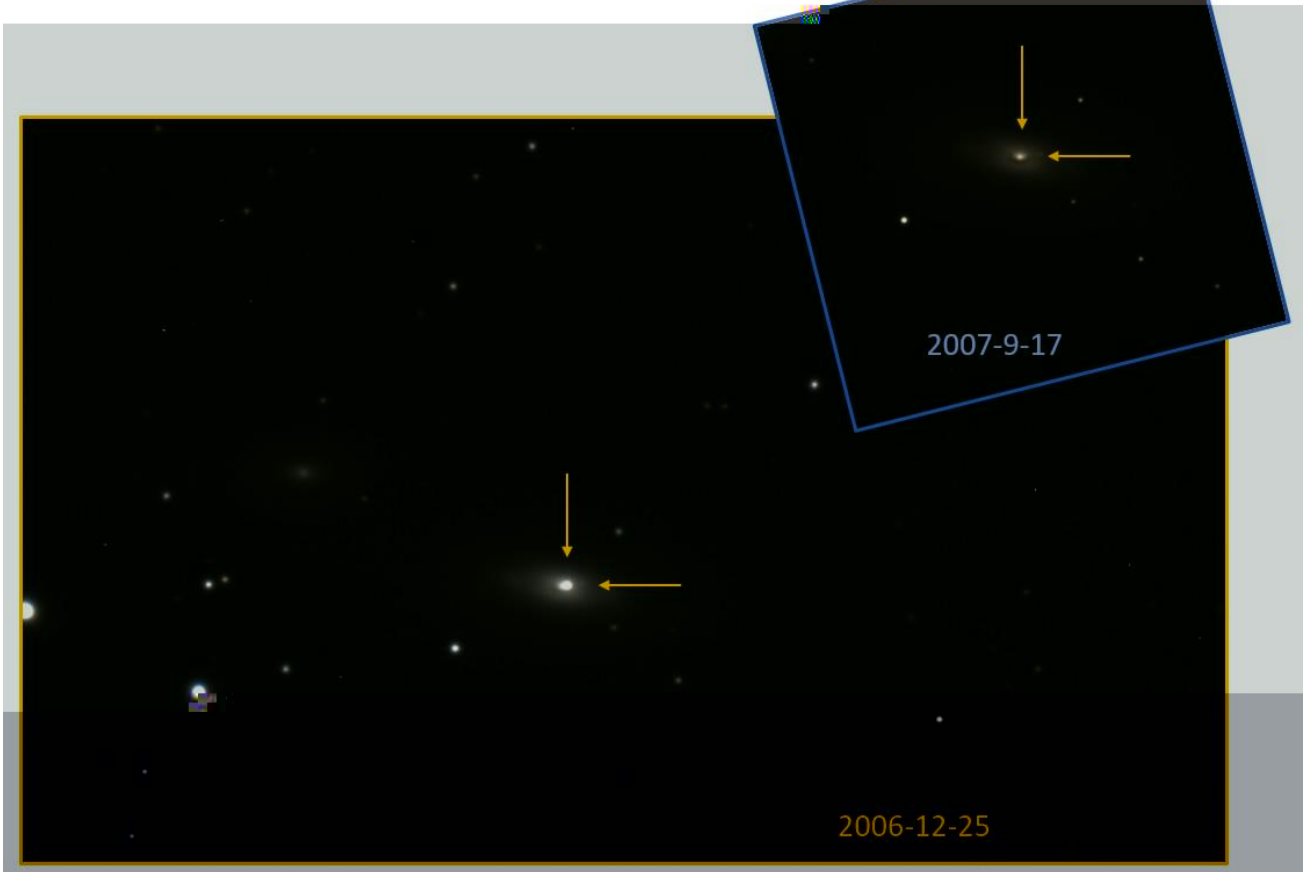
SN 2006gy

Ia

Ia

Ia

Ia



SN2006gy

FOCAS

100

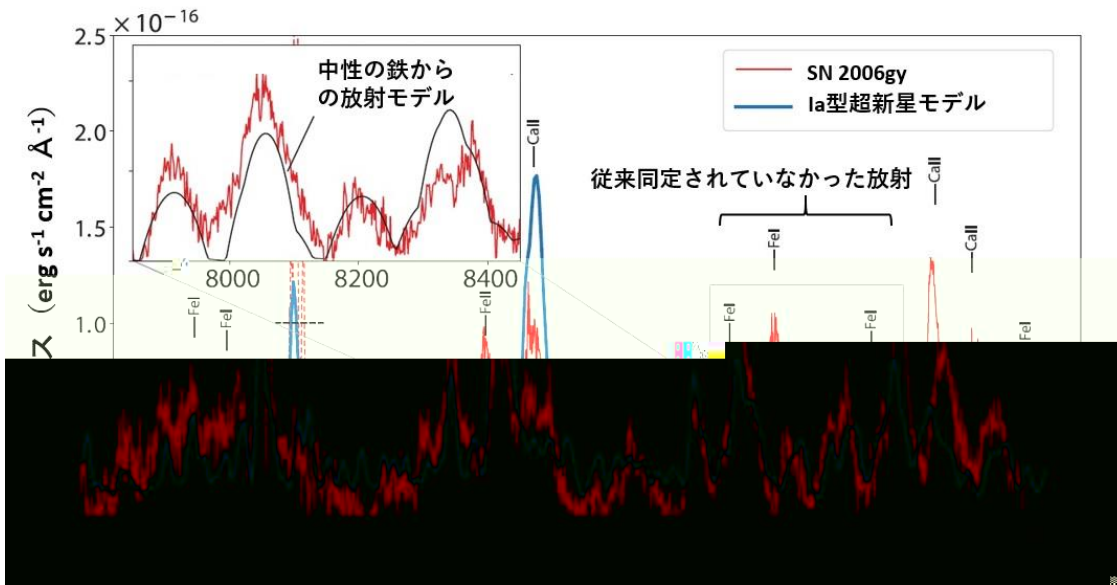
2006 12 25

SN2006gy

400

300 2007 9 17

© Koji Kawabata

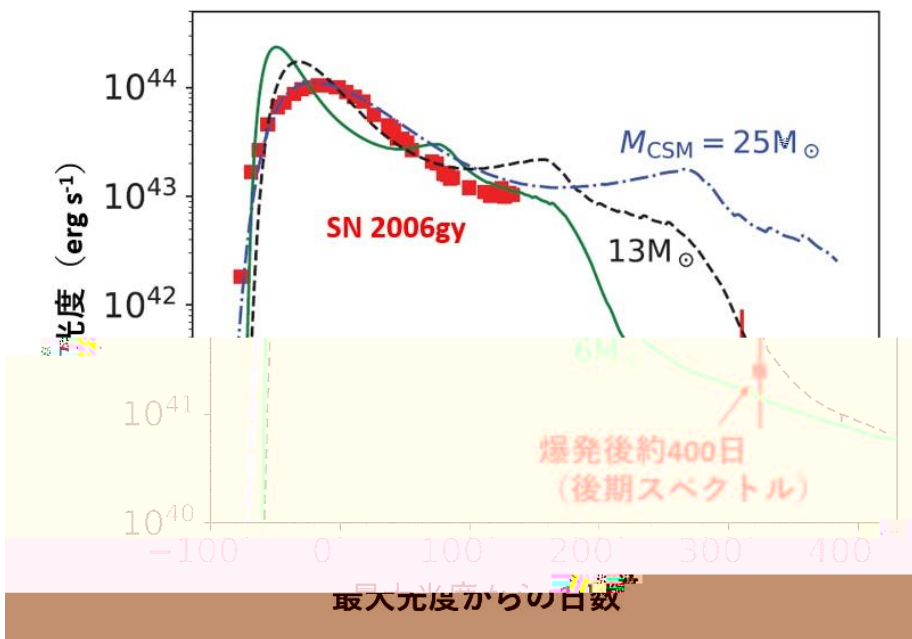


SN 2006gy

400

Ia

Jerkstrand, Maeda, Kawabata



SN 2006gy

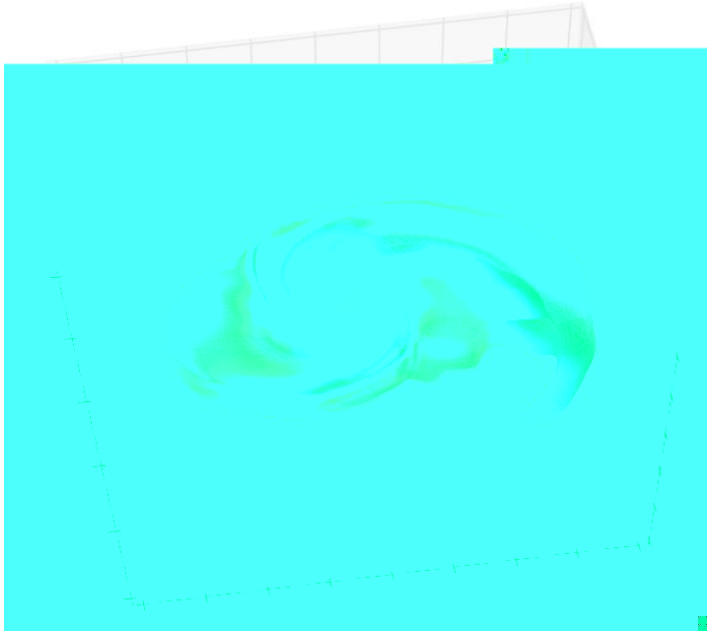
Ia

6 13 25

10

1,500 km s⁻¹

Jerkstrand, Maeda, Kawabata



SN 2006gy

©Roberto Iaconi & Keiichi Maeda

la

la

la

| | | | | |
|----------|-----|----|-----|---|
| 18H05223 | S | la | | |
| / | | | | |
| 18H04585 | | | | |
| 17H02864 | B | | 100 | 1 |
| 17684004 | (A) | | | |
| 18H03720 | (A) | | | |

10⁴⁴

URL http://www.kyoto-u.ac.jp/ja/research/research_results/2018/190117_1.html

URL <https://www.ipmu.jp/ja/node/757>

<https://www.ipmu.jp/ja/feb-1-2008>

http://www.kyoto-u.ac.jp/ja/research/research_results/2018/190305_1.html

Kawabata, K., Tanaka, M., Maeda, K., et al. 2009, *The Astrophysical journal*, 697, 747

Jerkstrand

Jerkstrand, A., Fransson, C., Kozma, C. 2011, *Astronomy and Astrophysics*, 530, A45

1.4

10^{44}

1.4

la

Morozova, V., et al. 2015, The Astrophysical Journal, 814, 63
URL <https://stellarcollapse.org/SNEC>

8

10

la

la

URL http://www.kyoto-u.ac.jp/ja/research/research_results/2017/171005_1.html

3.8

2019

A Type Ia supernova at the heart of superluminous transient SN 2006gy
SN2006gy Ia

Anders Jerkstrand^{1,2}, Keiichi Maeda^{3,4}, Koji Kawabata⁵

¹Max-Planck-Institute for Astrophysics, Germany.

²The Oskar Klein Centre, Department of Astronomy, Stockholm University, Sweden.

³Department of Astronomy, Kyoto University, Japan.

⁴Kavli Institute for the Physics and Mathematics of the Universe, The University of Tokyo, Japan.

⁵Hiroshima Astrophysical Science Center, Hiroshima University, Japan.

Science (24 January 2020)

広島

TEL 082-424-7371 070-5075-3634

FAX 082-424-5765

E-mail kawabtkj@hiroshima-u.ac.jp

<https://home.hiroshima-u.ac.jp/kawabtkj/index-j.html>

TEL 075-753-3894 080-2014-7824

FAX 075-753-3897

E-mail