



NEWS RELEASE

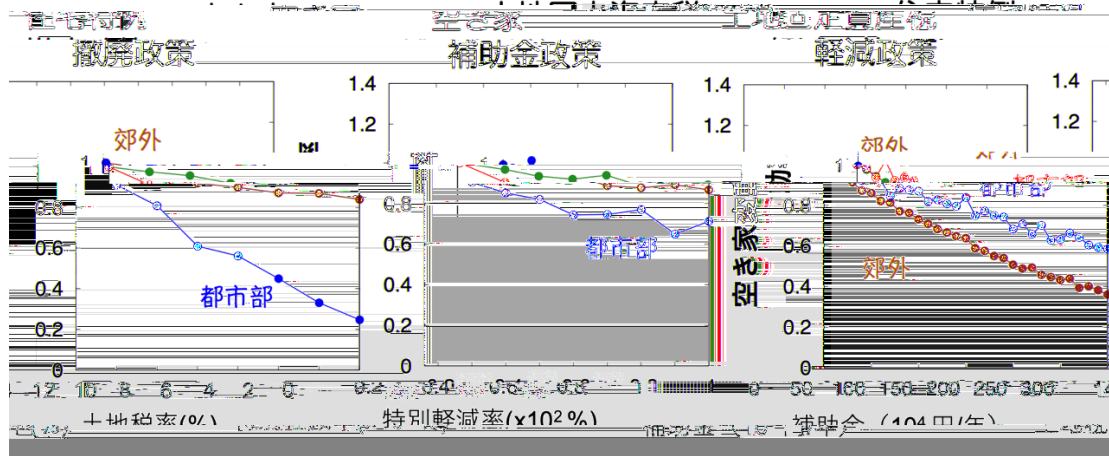
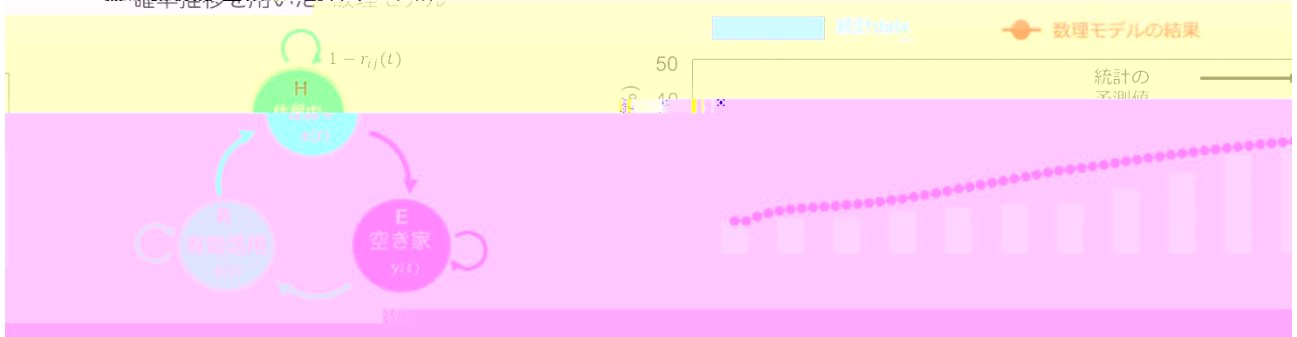
Mathematical modeling and regionality-based optimal policy to reduce empty houses, Akiya, in Japan

1,2,3,*₁, 2₂, 2

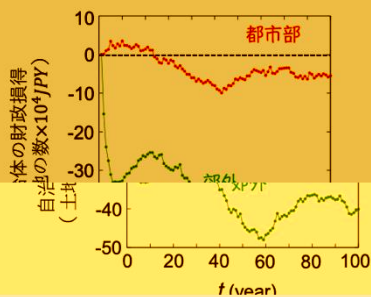
* (corresponding author)

- 1.
- 2.
3. JST

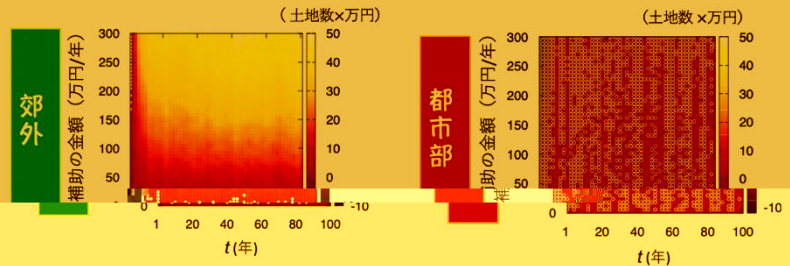
確率推移を用いた数理モデル



空き家政策を使わなかった場合の自治体の財政損得



2010年以降補助金政策を使った場合の毎年たつた自治体財政損得 (都市部・郊外)



田舎の場合は補助金を上げれば自治体も黒字財政にな

