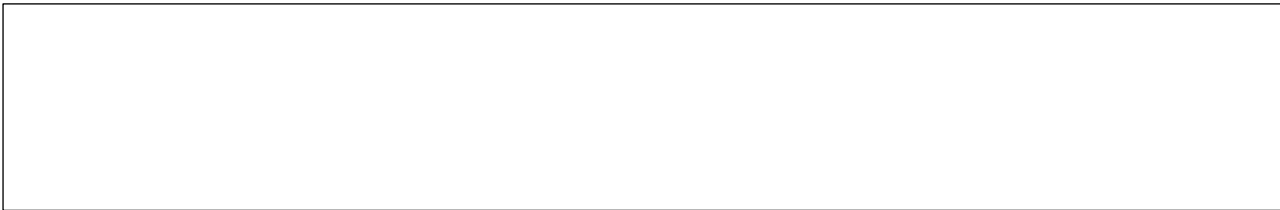




UNIVERSITÄT
BAYREUTH



2019 10 4

Spring-8

660 km

Spring-8 ¹

X

BL04B1

²

2 km

660 km

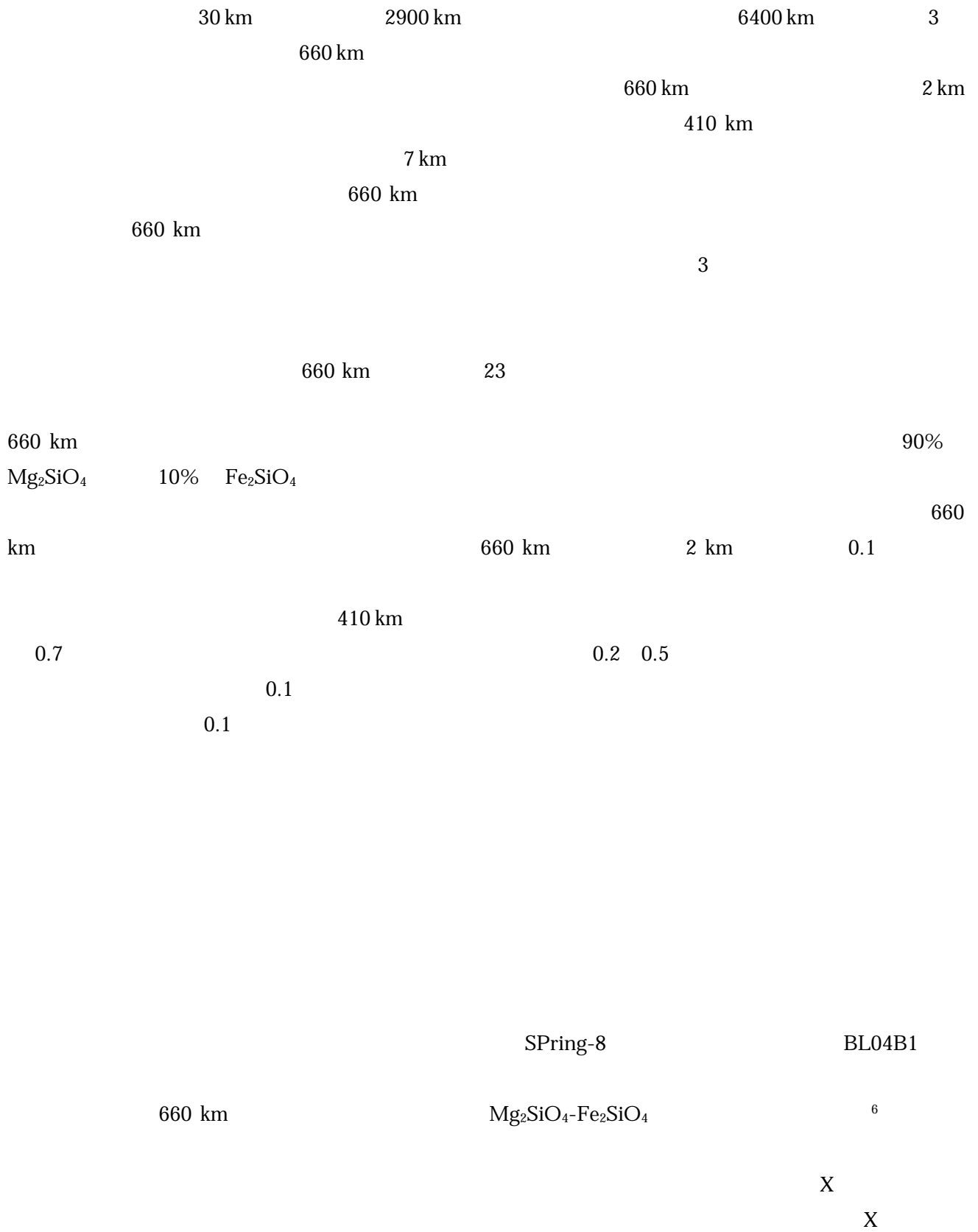
³

660 km

660 km

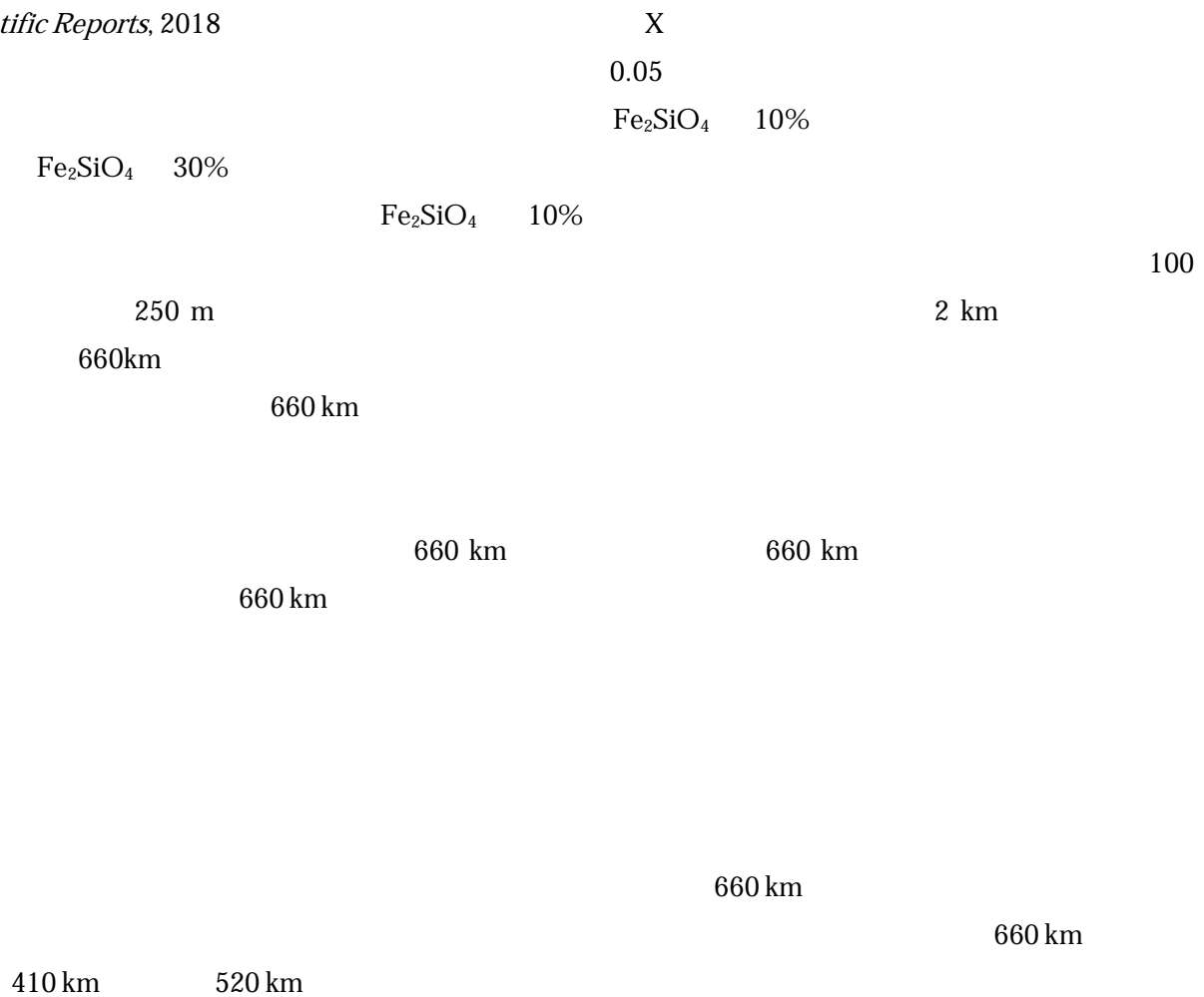
⁴

Nature Geoscience



Katsura et al. *Physics of the Earth and Planetary Interiors*, 2004;

Ishii et al. *Review of Scientific Instruments*, 2016; Ishii et al. *High Pressure research*, 2017; Ishii et al. *Scientific Reports*, 2018

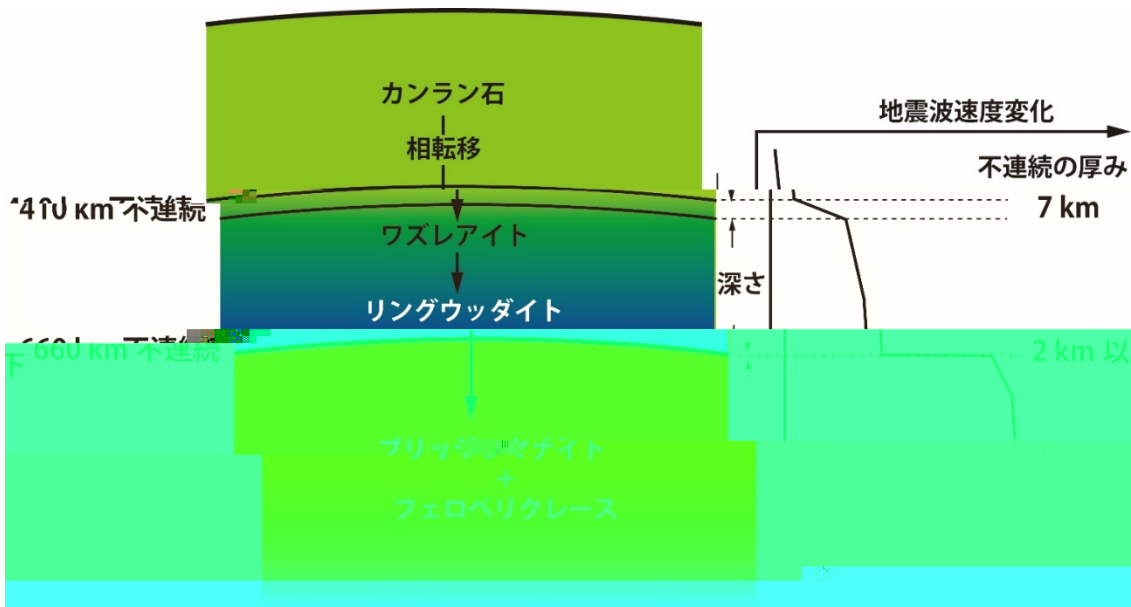
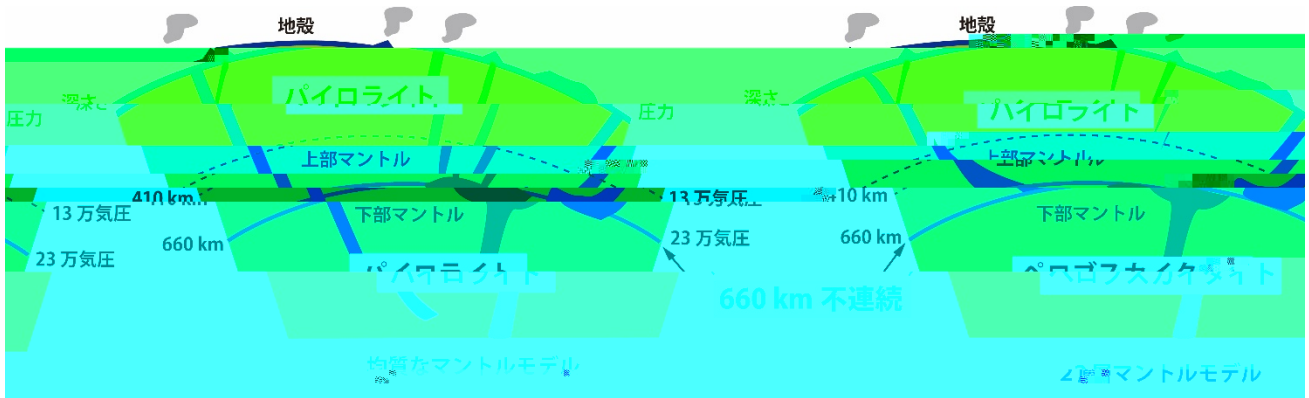


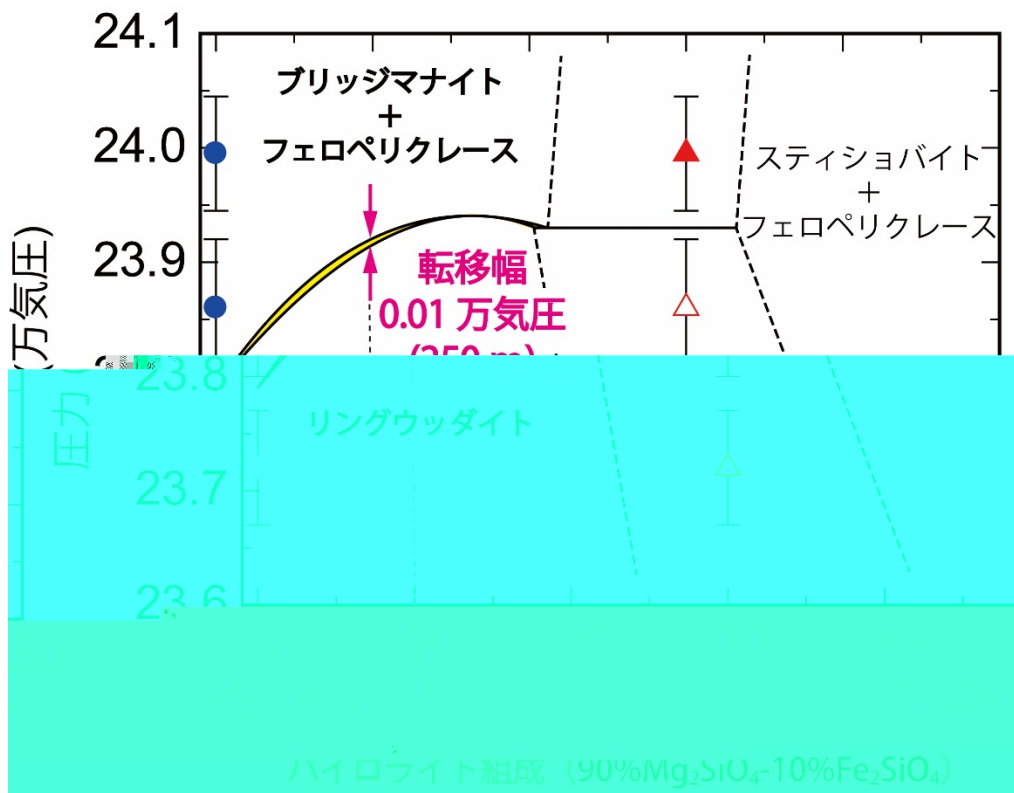
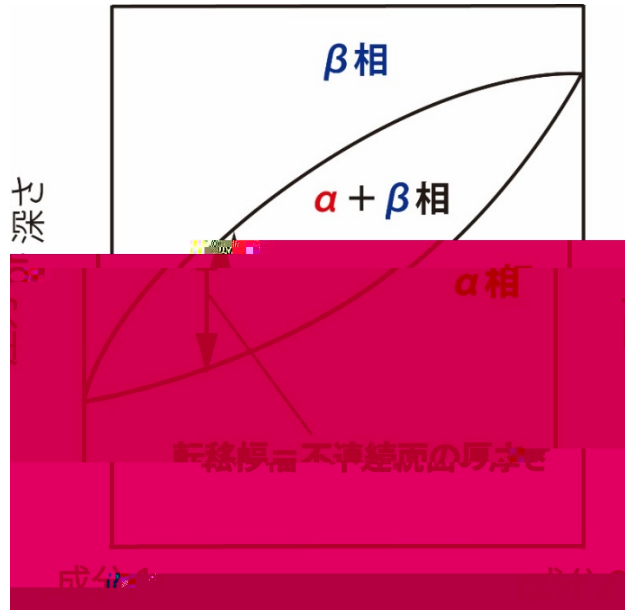
Sharp 660-km discontinuity controlled by extremely narrow binary post-spinel transition

660 km

Takayuki Ishii, Rong Huang, Robert Myhill, Hongzhan Fei, Iuliia Koemets, Zhaodong Liu, Fumiya Maeda, Liang Yuan, Lin Wang, Dmitry Druzhbin, Takafumi Yamamoto, Shrikant Bhat, Robert Farla, Takaaki Kawazoe, Noriyoshi Tsujino, Eleonora Kulik, Yuji Higo, Yoshinori Tange, Tomoo Katsura

Nature Geoscience





660 km

1

SPring-8

JASRI

SPring-8

Super Photon ring-8 GeV

SPring-8

2

3

660 km

660 km

660 km

660 km

23

1700

2 km

410

km

7 km

4

5

90%

Mg₂SiO₄

10%

Fe₂SiO₄

6

2

“

”

0

°

ë

%

H₂O

Bayerisches Geoinstitut (BGI)
Universität Bayreuth
Universitätsstraße 30
D-95447 Bayreuth, Germany
E-mail Takayuki.ishii@uni-bayreuth.de

1-1-1

TEL 0791-58-0802 FAX