
5. 2 実験方法および結果

	Al1100	1wt.%	(Al ₂ O ₃)	ARB
		ARB		
Fig.2	3	Fig.1		ARB

Fig.1 Schematic diagram of ARB method.

Fig.2 Tensile strength of each sample.

Fig.2 ARB

,
4MPa

5. 3 考察

SEM

Fig.3

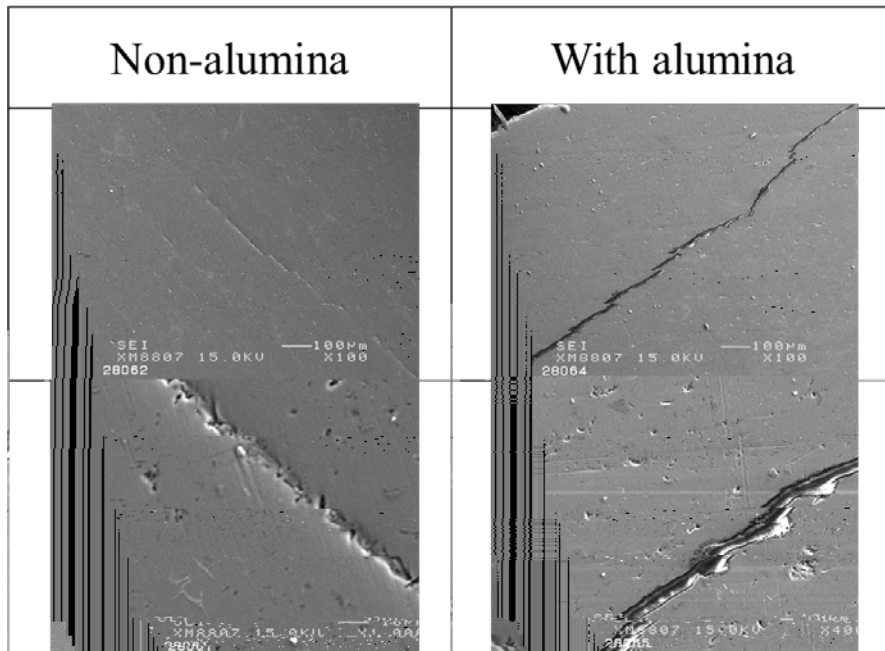


Fig.3 SEM images of the boundary part of the samples.

SEM

1

1

6. まとめ

1

7. 謝辞

Riska

Aditianto Ramelan