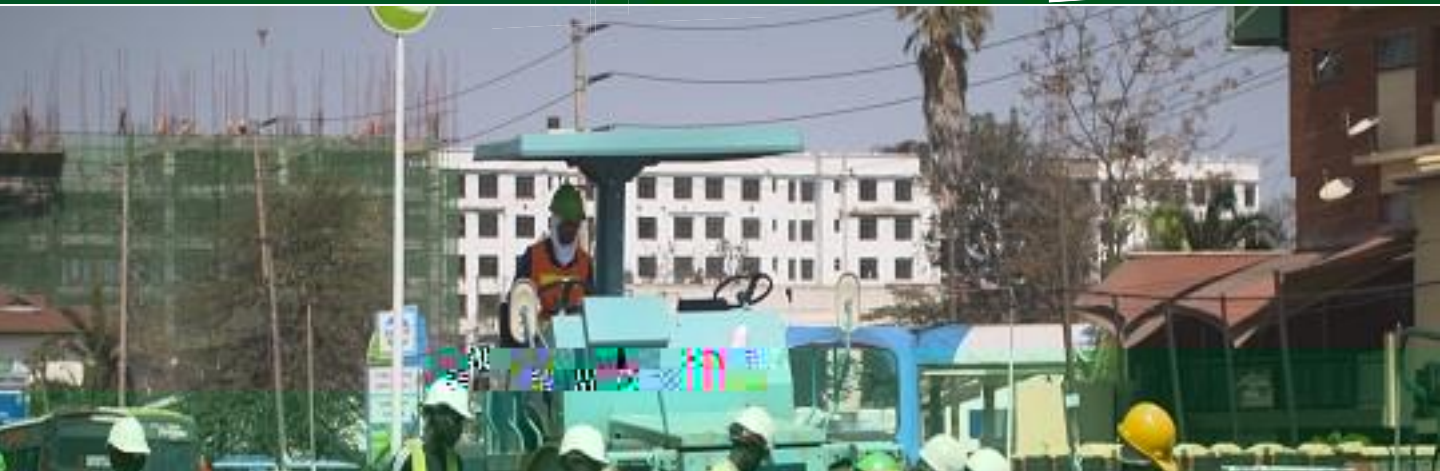
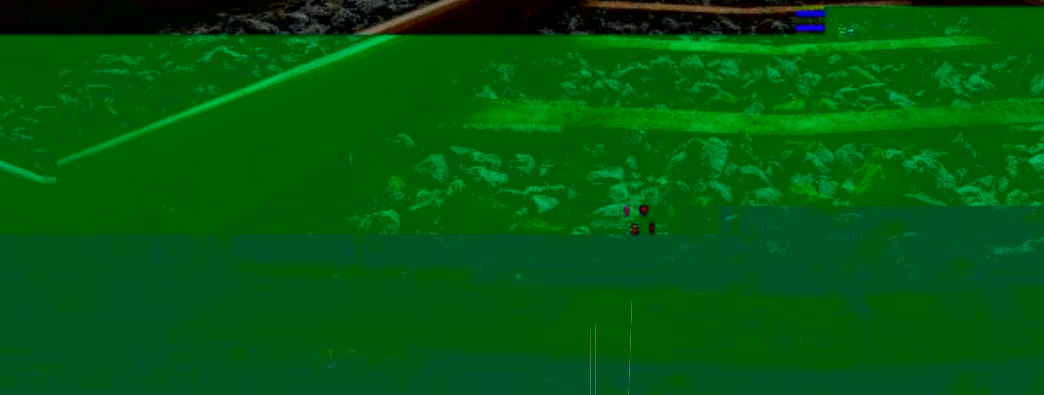


Peacebuilding and Infrastructure



Dr. Nishimiya, Former Executive Director, JICA Chugoku Center, has a lot of experiences of international cooperation for development, particularly of road transportation, in conflict affected areas. During his tenure as the Director of JICA Chugoku Center, he organized a series of inter-disciplinary and interdisciplinary peacebuilding seminar with practitioners, civil services and academicians. He studied the focus tangible effects of peacebuilding assistance and argues both positive and negative impacts.

紛争影響地域における道路の分野での社会基盤整備に豊富な経験を持つJICA中国センター元所長の西宮浩一氏は、事務家や公務員、研究者との領域横断型・組織横断型の平和構築支援の持つ様々な具体的影響を研究し、そのプラス面やマイナス面を

No registration required
More information: Contact: Osamu
0936 (Ext.)

oyoshid@hiroshima-u.ac.jp 6936