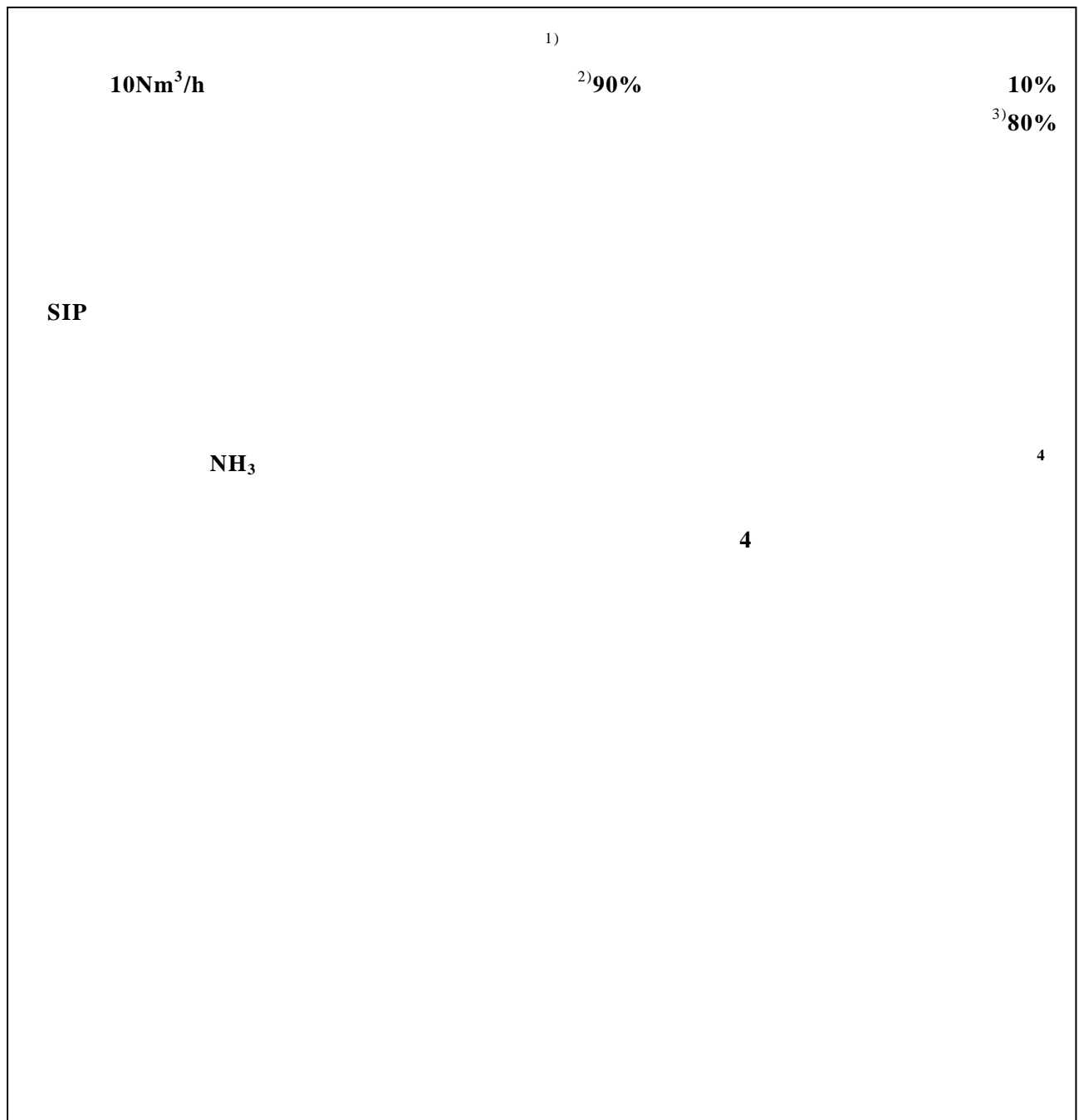


平成30年10月11日



10

NH<sub>3</sub>) 1

3

3

		2016		1.05Nm <sup>3</sup> /h
2Nm <sup>3</sup> /h	75	25		

70%

90%

3

	1.05Nm <sup>3</sup> /h	1.35Nm <sup>3</sup> /h	
78%	82%		
	2	VPSA	

4

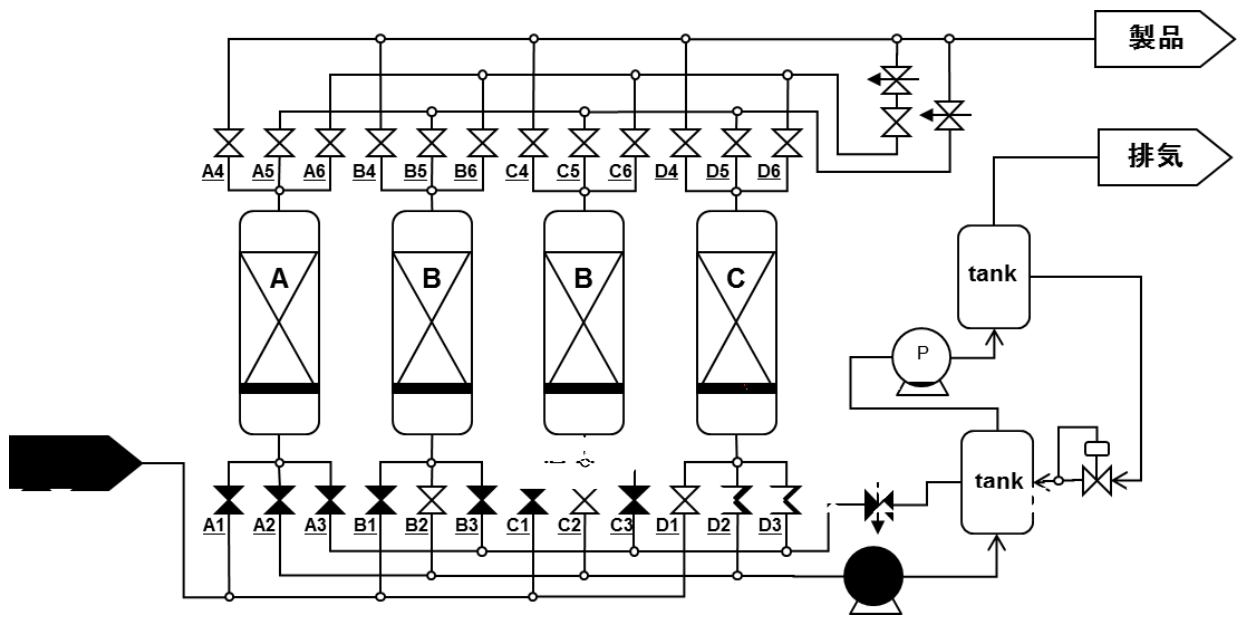
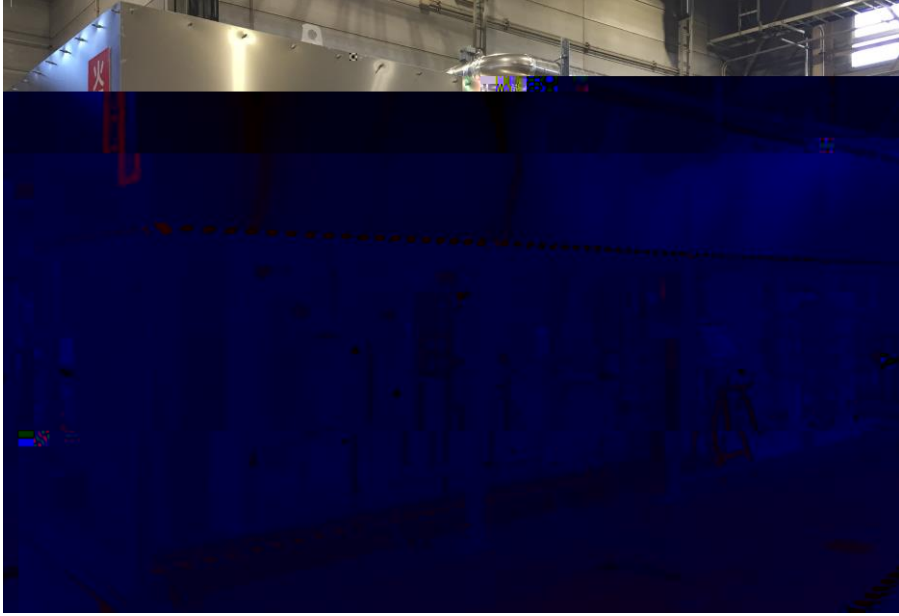
VPSA

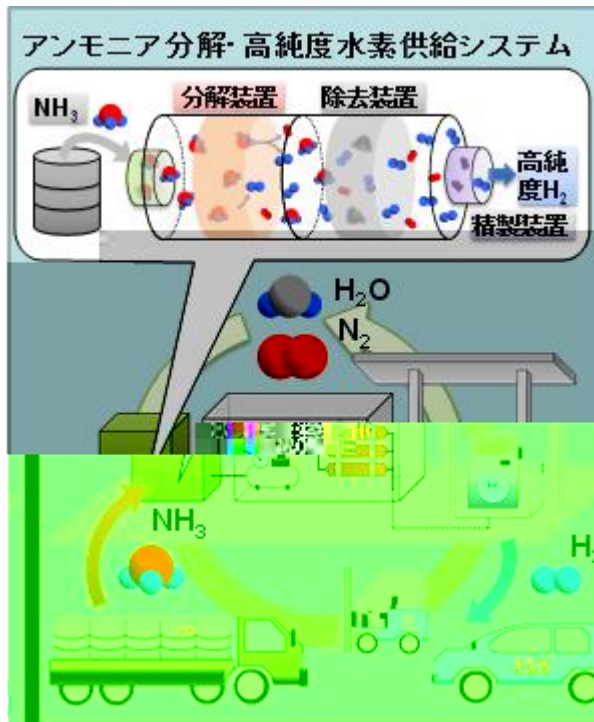
LPG

CO<sub>2</sub>

20Nm <sup>3</sup> /h	75	25		13.5Nm <sup>3</sup> /h
1,2		300	1,000Nm <sup>3</sup> /h	

CO<sub>2</sub>





1)

2014 12  
MIRAI 2016 3  
CLARITY FUEL CELL

2)

/

3)

/

4)

5) 4

Pressure Swing Adsorption PSA

PSA 2

4

739-8530 1-3-1  
TEL 082-424-3904 FAX 082-424-5744  
E-mail kojimay@hiroshima-u.ac.jp

TEL FAX  
E-mail sip\_energycarrier@jst.go.jp

IR  
142-8558 1-3-26  
TEL 03-5788-8015  
E-mail Tnsc.Info@tn-sanso.co.jp

739-8511 1-3-2  
TEL 082-424-3749 FAX 082-424-6040  
E-mail koho@office.hiroshima-u.ac.jp

102-8666 5-3  
TEL 03-5214-8404 FAX 03-5214-8432  
E-mail jstkoho@jst.go.jp