

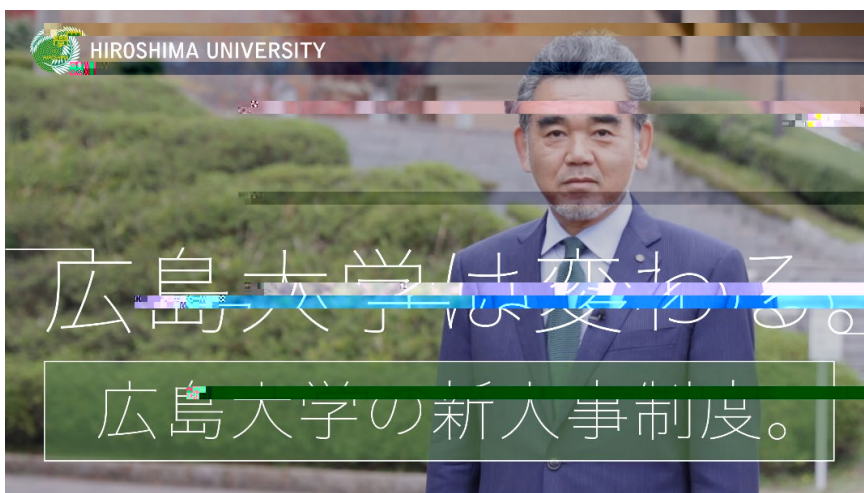
10

1

<https://www.hiroshima-u.ac.jp/about>

URL

<https://www.hiroshima-u.ac.jp/employment/kyoinkobo>



2025 2 3

()

1-2-1

2025 4 1

(1)

(2)

(3)

- (1) (),
- (2) () () ()
- (3) () ()
- (4) ()
- (5)

- (1)
- (2)
- (3)

- (1) TA RA
- (2)

()

- (3)
- (4)
- (5)
- (6)
- (7)
- (8) 2,000 3,000
- (9) ResearchID ORCID
Clarivate Analytics ORCID web

10

2025 3 31 17:00

11

PDF

kazuhaya@hi-roshi-ma-u.ac.jp

12

(1)

(2)

(3)

13

(1) 8:30 17:00 12:00 12:45

1 7 45

(2)

(3)

14

(1) II 2021 10

(2)

15

16

17

(1)

(2)

(3)

65

(4)

(5)

()

(6)

(7)

URL

<https://www.hiroshima-u.ac.jp/employment/kyoinkobo/>

(8)

<https://www.hiroshima-u.ac.jp/employment>

(9)

2020 1

18

TEL: 082-424-7264

E-mail: kazuhaya@hiroshima-u.ac.jp