

様式 1 公表されるべき事項

国立大学法人広島大学(法人番号1240005004054)の役職員の報酬・給与等について

1

$$\left(\begin{array}{c} 1 \end{array} \right)$$

$$\left(\begin{array}{c} (1 \quad 706,000) \\ 100 \quad 25 \quad 100 \quad 120 \\ 25 \quad 01 \quad 4 \quad 95 \quad 100 \quad 167.5 \\ 6 \quad 015 \quad 12 \end{array} \right)$$

$$\left(\begin{array}{c} 1 \end{array} \right)$$

	4						
	18,500	13,284	5,216	0			
A	15,496	10,740	4,292	464			
B	15,123	10,740	4,087	295		3 31	
C	14,851	10,740	4,087	24		3 31	
D	14,476	10,278	4,113	85			
E	14,405	8,472	3,834	2,099		3 31	
F	12,516	8,488	4,008	20		1 31	
G	3,720	3,720	0	0		3 31	
H	1,956	1,800	0	156		3 31	
A	12,270	8,472	3,327	471			
B	9,832	9,360	0	472			

((5)

3,600

(()

(()

(()

(()

(()

A	11 1.05
B	START 1.05

()

(100 120 6 100 25 28 10)

				4	
1		3,600			
405,049	4		413,064		
2					4
449,846					

		16			
--	--	----	--	--	--

			4		
100	120			6	
		100	102		
4	4				
				3 11 19	
			4 9		5 4
				PI	4 10
6					
12		Q15			
		Q3%			
		Q1			

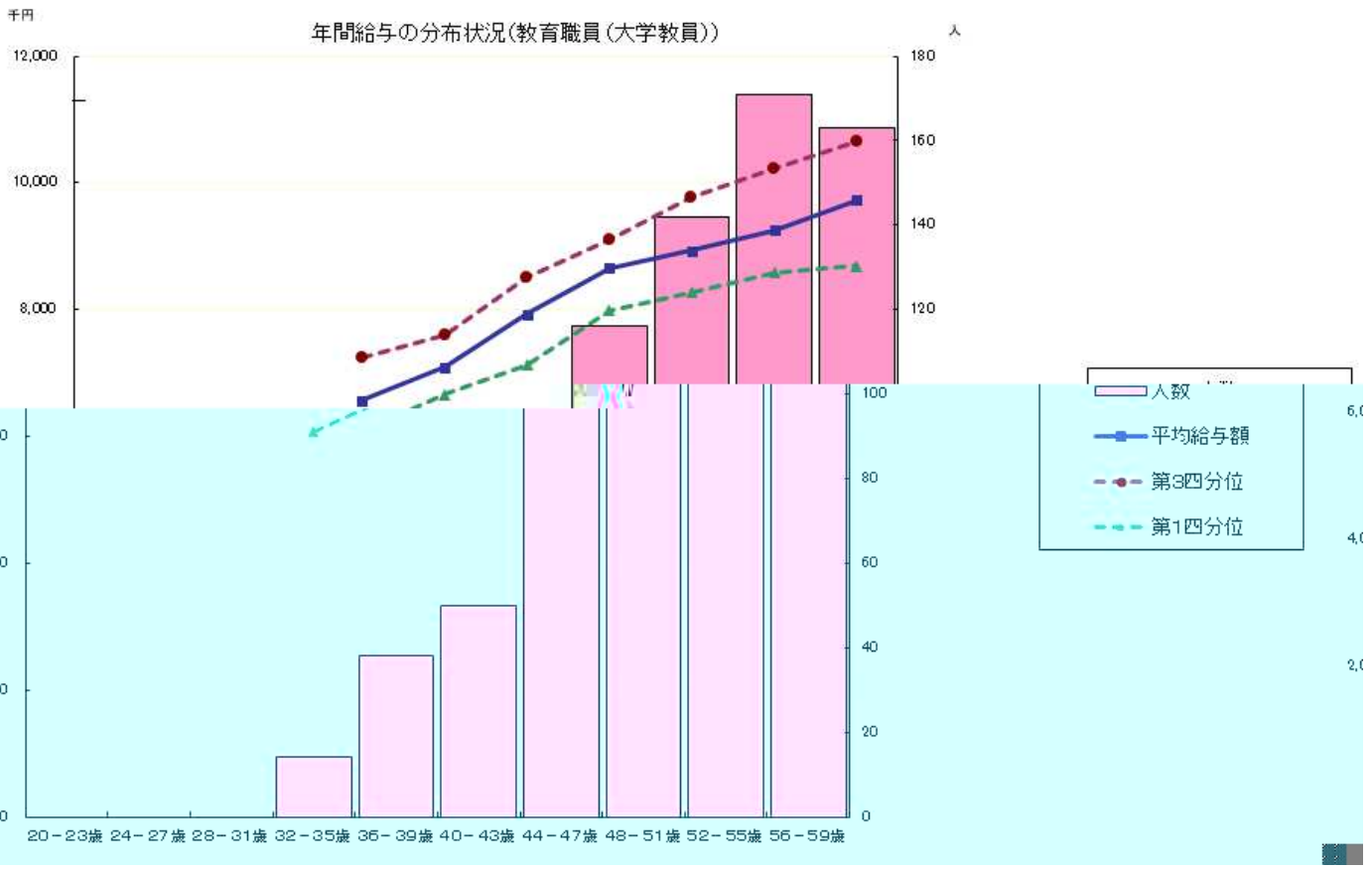
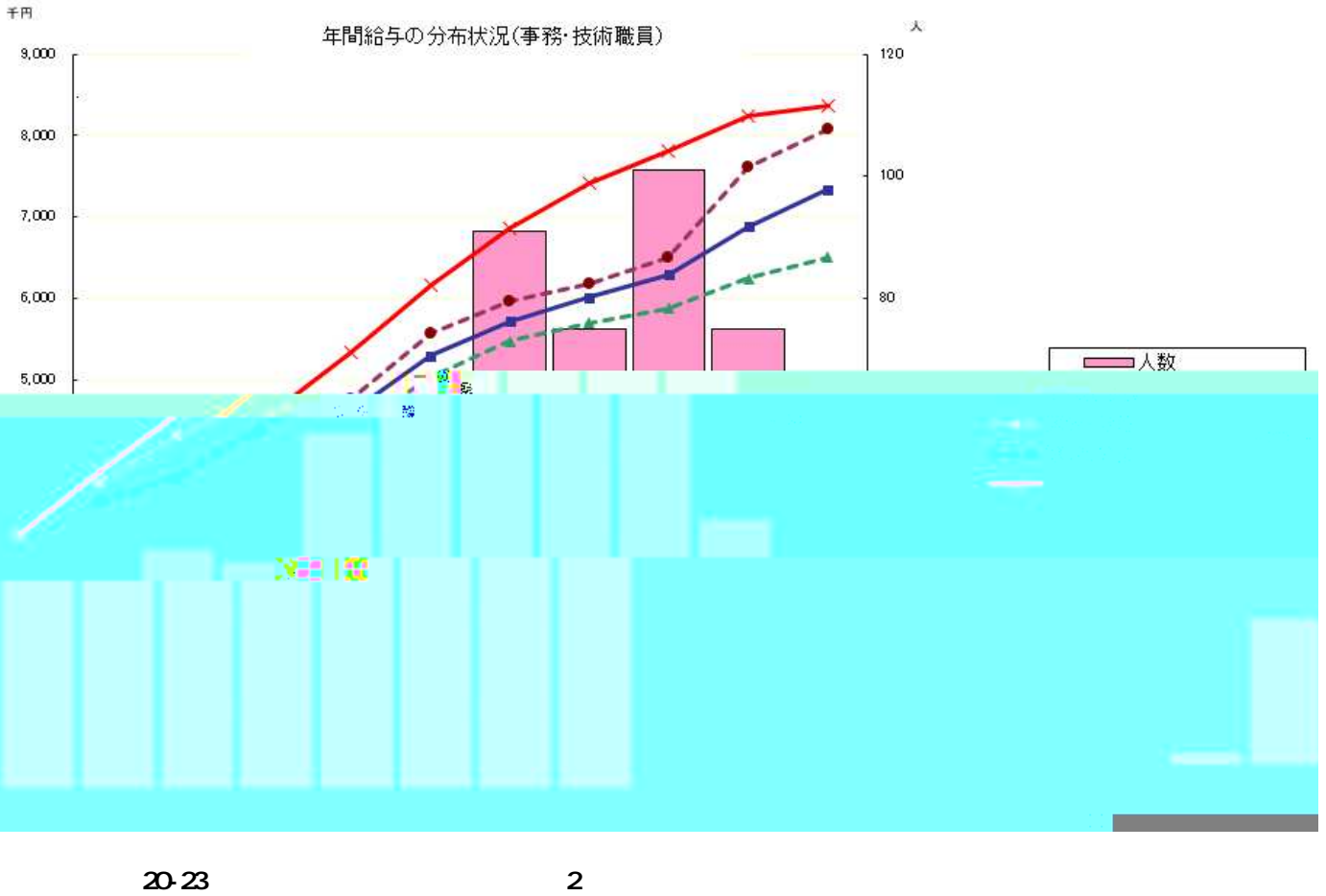
			4			
	2,403	45.4	7,065	5,187	103	1,878
	546	44.4	5,965	4,396	151	1,569
	911	53.5	9,249	6,740	125	2,509
	604	36.0	5,205	3,858	34	1,347
	4	50.0	5,598	4,215	245	1,383
	8	43.1	6,873	5,021	0	1,852
	3	43.5	5,355	3,961	0	1,394
	78	44.3	7,361	5,477	140	1,884
	77	41.0	6,892	5,141	105	1,751
	169	40.3	5,531	4,077	65	1,454
	3	51.5	5,946	4,380	105	1,566

	440	42.3	7,716	6,707	43	1,009
	431	42.2	7,740	6,745	41	995
	9	45.9	6,590	4,913	155	1,677

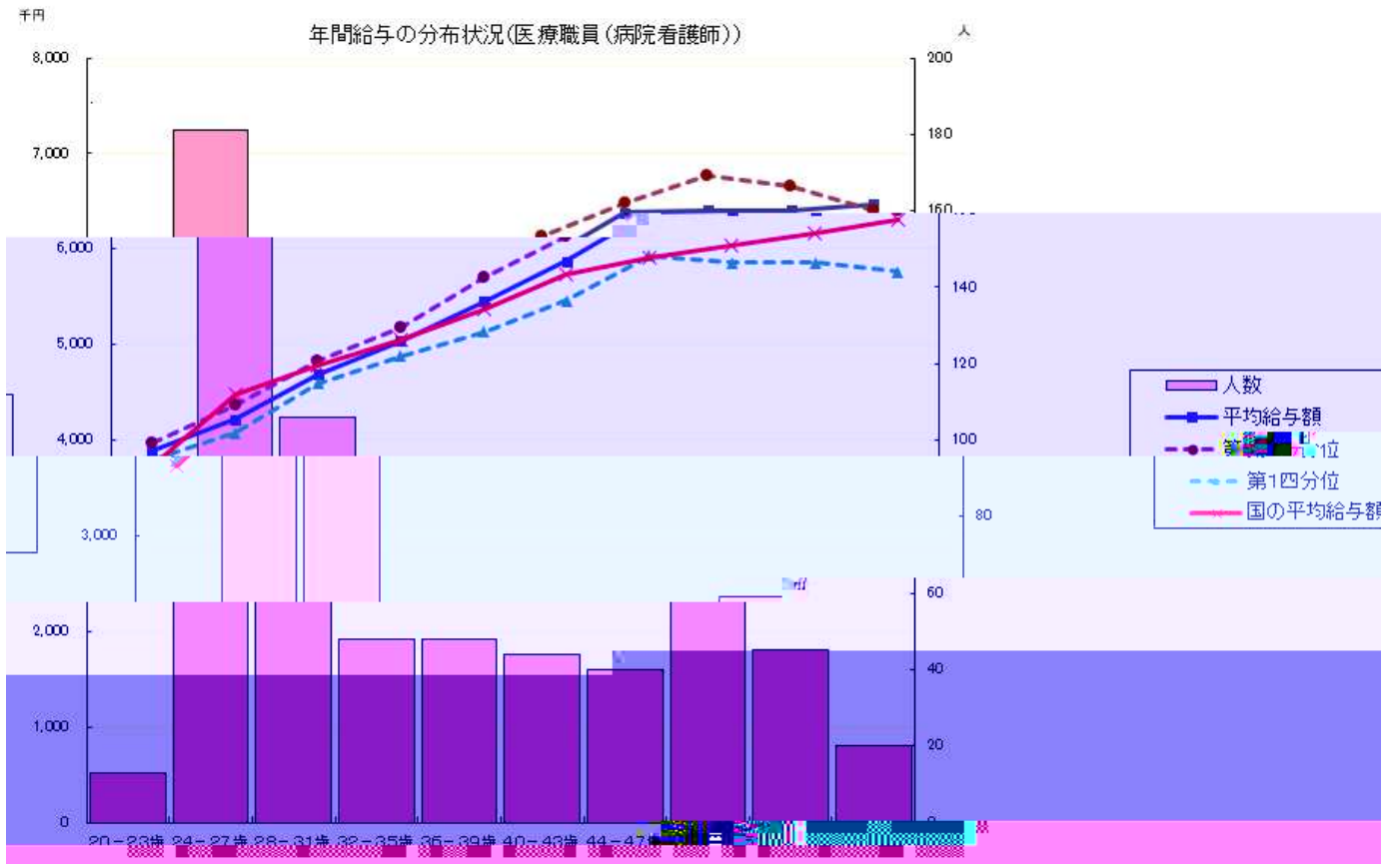
	42	62.5	3,733	3,148	126	585
	26	62.4	3,414	2,880	165	534
	9	62.4	3,991	3,347	30	644
	7	63.2	4,588	3,889	104	699

			4			
	562	44.3	4,183	3,577	65	606
	247	48.3	3,648	2,815	115	833
	4	44.3	7,354	5,609	19	1,745
	45	36.4	3,900	3,409	1	491
	50	45.9	3,215	2,514	67	701
	70	33.3	4,212	3,203	69	1,009
	125	45.9	5,634	5,634	0	0
	14	28.0	2,796	2,796	0	0
	4	45.8	6,795	6,795	0	0
	3	62.2	6,270	6,270	0	0

	45	54.0	7,453	7,453	0	0
	40	53.4	7,327	7,327	0	0
	5	58.5	8,460	8,460	0	0



年間給与の分布状況(医療職員(病院看護師))





57.1 9,426

1 8,013

174

65

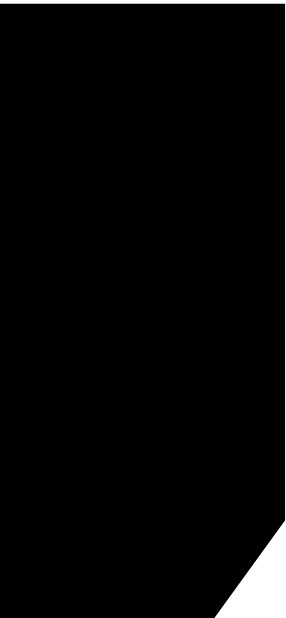
303

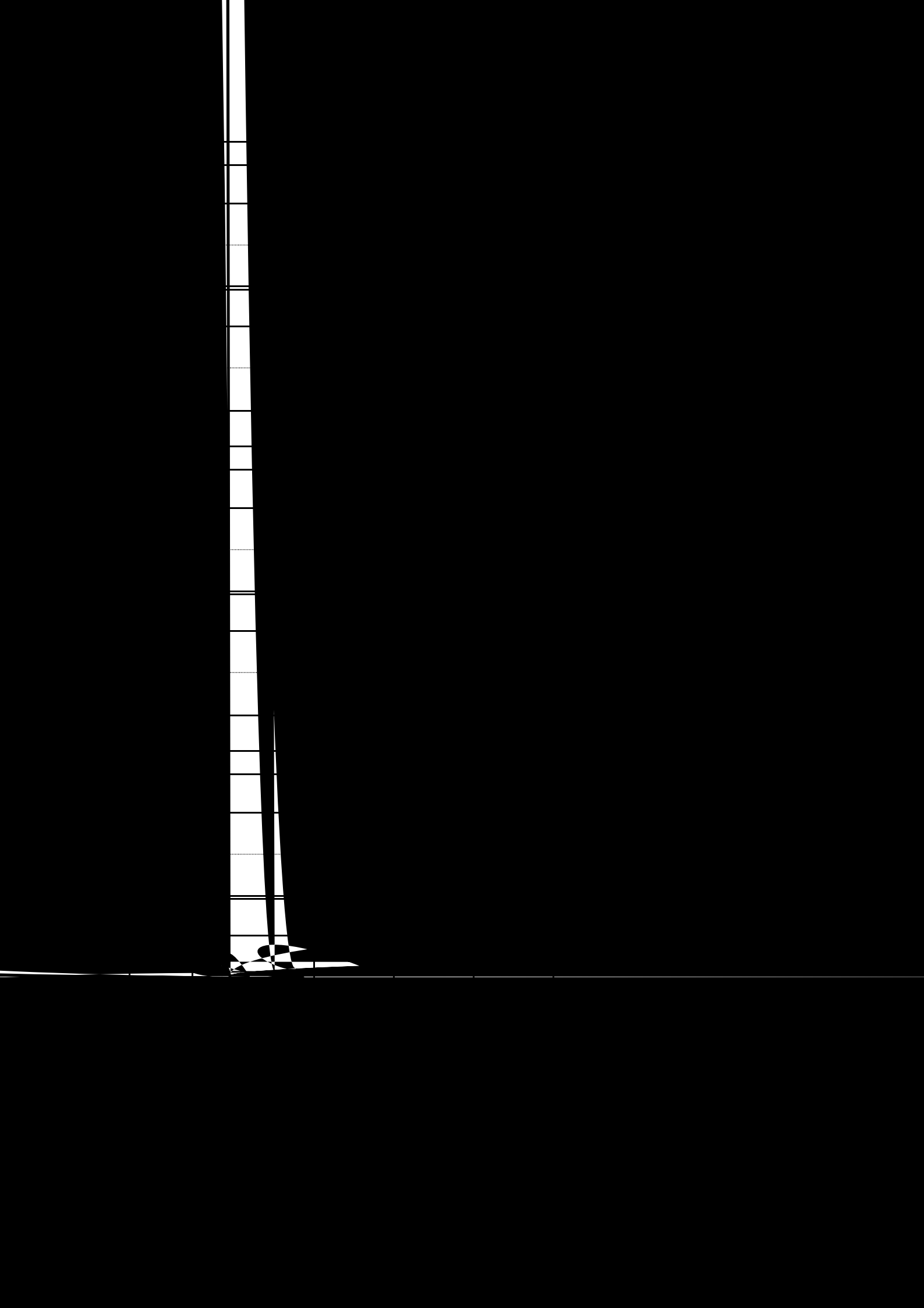
3,908

sgY+2 3% á0b.0\$ 0FgtxoarH"vVi Sa

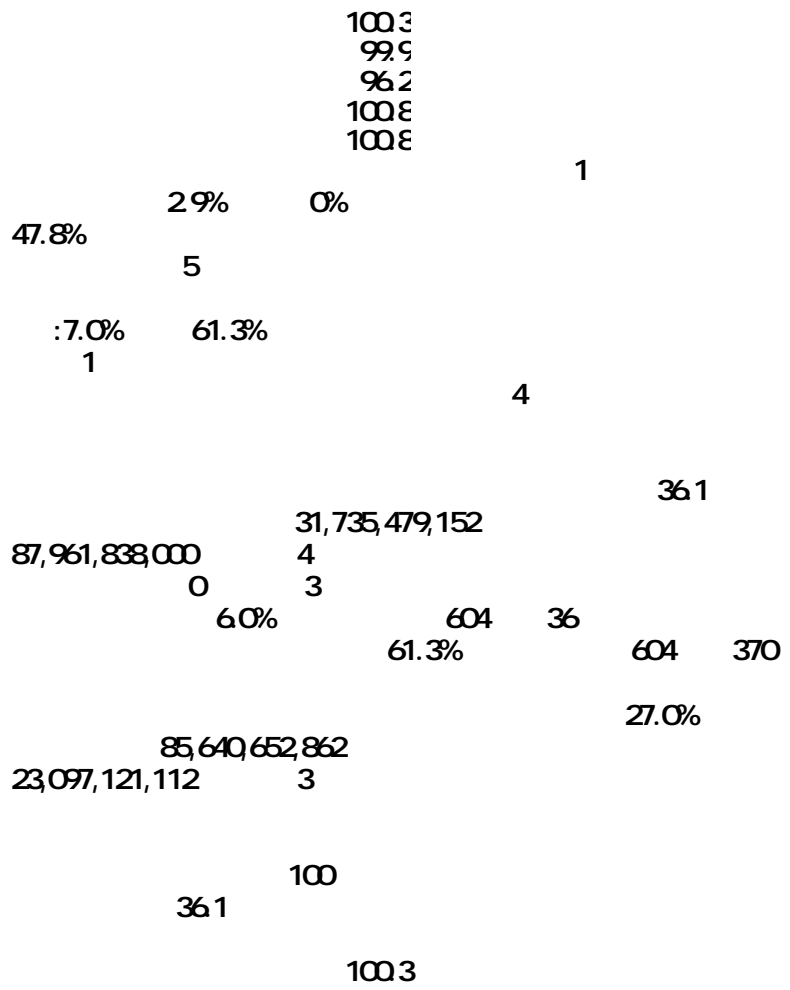
5

9





83.E
90.E
82.E
90.2
97.C



25 12 24

185,200	2,764,005	
282,838	4,707,842	
454,436	7,460,662	
315,500	4,761,067	
362,766	6,044,406	
524,167	8,966,402	
10,000		6,500

	16	
28 4		

	4	5	6	7	8	9
(A)	22,585,965					
(B)	1,916,575					
(C)	12,252,451					
(D)	5,224,834					
(A+B+C+D)	41,979,827					

(18)

A D

[3 08]

[]