

1

$$\left[\begin{array}{cc} & 19 \\ (&) \end{array} \quad 100 \quad 10 \right]$$

$$\left[\begin{array}{cc} & (\quad 17 \quad) \\ 17 & \\ & (\quad \quad \quad) \\ & (\quad \quad \quad 3 \quad) \\ 60\text{km} \quad 300\text{km} \quad 2\% \quad 300\text{km} \quad 4\% \end{array} \right]$$

$$\left[\begin{array}{cc} & \\ & \\ & \\ & \\ 17 & (\quad 17 \quad) \\ & \\ & \\ & \\ & (\quad \quad \quad) \end{array} \right]$$

17,929 1,91071 13,547 5

447
25

	5,424	3	2	5 $\frac{19}{20}$	1.0	1.0	
A	4,693 58,568	3(38)	2(2)	5 $\frac{19}{20}$	1.0	1.0	

1

2

()

()

()

	()

(17)

17

) (

(10,000) (10,000)

3 1,000 (5,000 6,000)

()

(300km 3 60km 300km 2%
300km 4%

(80,000)

(2,000

(6,000 6,500) 500

(4% 5% 1% 2%) 1%

()

1,700 2,000 300

12

0.05

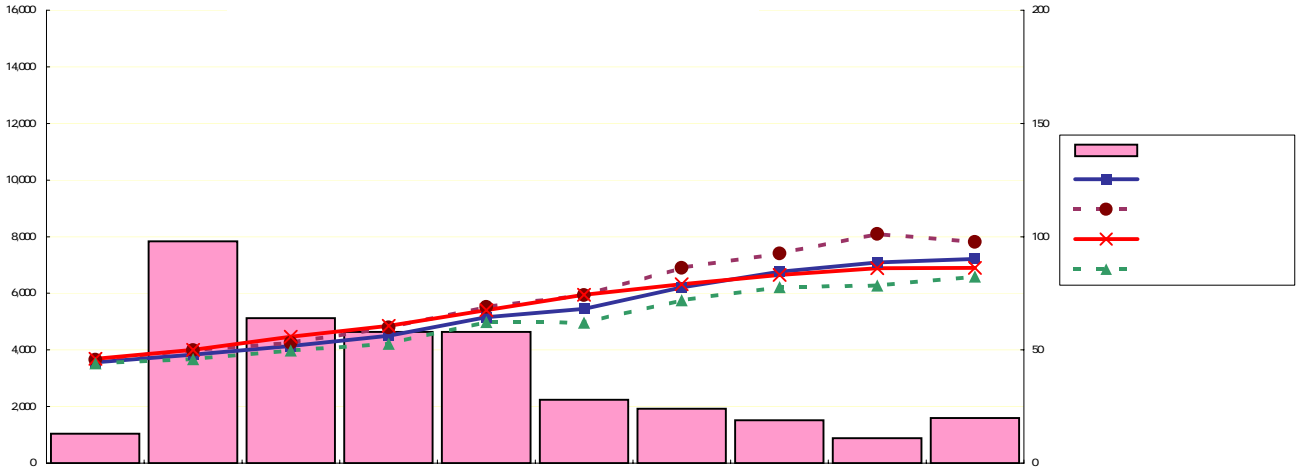
				19		
	2,671	44.2	7,415	5,369	114	2,046
	573	42.3	5,674	4,153	167	1,521
	1,415	47.5	8,961	6,447	114	2,514
	393	35.4	4,875	3,584	42	1,291
	2					
	8	48.5	7,410	5,368	0	2,042
	4	33.5	4,654	3,387	0	1,267
	92	44.7	7,350	5,378	81	1,972
()	88	43.5	7,317	5,357	103	1,960
	89	43.1	5,812	4,232	100	1,580
	3	30.2	3,566	2,661	142	905
	4	52.0	6,181	4,486	78	1,695

--	--	--	--	--	--	--

	177	34.4	4,893	4,260	42	633
	11	34.3	3,461	2,637	73	824
	24	38.6	7,421	5,653	24	1,768
	29	34.5	3,515	3,215	0	300
	57	28.6	3,639	2,728	105	911
	56	38.6	6,080	6,080	0	0

1

54.3	9,921	10,551	11,166
45.7	8,022	8,496	9,014
44.0	7,540	8,048	8,635



		4	49.3	-	7,901	-
		32	50.7	6,873	7,263	7,819
		69	41.7	5,132	5,634	6,225
		286	31.8	3,810	4,320	4,556
		2	59.5	-	-	-

		1	2	3	4	5
	573	58	90	278	87	37
		10.1%	15.7%	48.5%	15.2%	6.5%
		31 22	55 27	59 33	59 44	59 47
()		2,849 1,804	4,153 2,389	5,067 2,799	5,529 4,099	6,199 4,612
()		3,764 2,488	5,604 3,287	7,000 3,842	7,585 5,737	8,406 6,520

	19	4		
	3.3%	0.7%		
	59 43	59 44		
()	7,366 5,847	8,191 6,248		
()	9,982 7,976	11,291 8,622		

	1	2	3	4	5
1,415		344 24.3%	95 6.7%	417 29.5%	559 39.5%
		61 27	60 31	62 32	62 38
		6,269 3,185			

	64.9		66.5		65.7
	35.1		33.5		34.3
49.6	31.8	46.2	30.0	46.7	31.1
	65.9		67.5		66.7
	34.1		32.5		33.3
39.9	31.4	38.0	29.6	38.9	30.7

	63.9		65.6		64.8
	36.1		34.4		35.2
46.3	32.0	43.6	30.6	44.9	31.3
	65.8		67.3		66.6
	34.2		32.7		33.4
42.7	31.6	43.6	29.8	43.2	30.7

	66.2		66.8		66.5
	33.8		33.2		33.5
36.4	32.1	38.0	30.7	36.0	31.4
	65.3		66.8		66.1
	34.7		33.2		33.9
39.9	30.0	38.0	29.6	38.9	30.3

	19	31,939	65,752

	19	31,939	65,752

	19	18			16	
(A)	23,432,000	23,555,024	123,024	0.5	490,257	2.0
()	2,991,850	2,704,634	287,216	10.6	312,040	(11.6
()	6,077,670	5,154,672	922,998	17.9	2,260,521	59.2
(D)	3,476,103	3,547,735	71,632	2.0	120,030	3.6
()	35,977,623	34,962,065	1,015,558	2.9	2,202,334	6.5

1

17

2

18

17 12 24

	17	18	19
	24,993,046	23,555,024	23,432,000
		5.8	6.2
		5.8	6.9

1

17 12 24

18

19
2

17
17

0% 0.7%