

22

2 3



22

1

21

19 5 21 23 3 31

HSIM

: 11

11

12

22	5	1	
10,969	(63)
4,540	(776) ()
11			
4,129			

1

1,942	(224)
1,551			

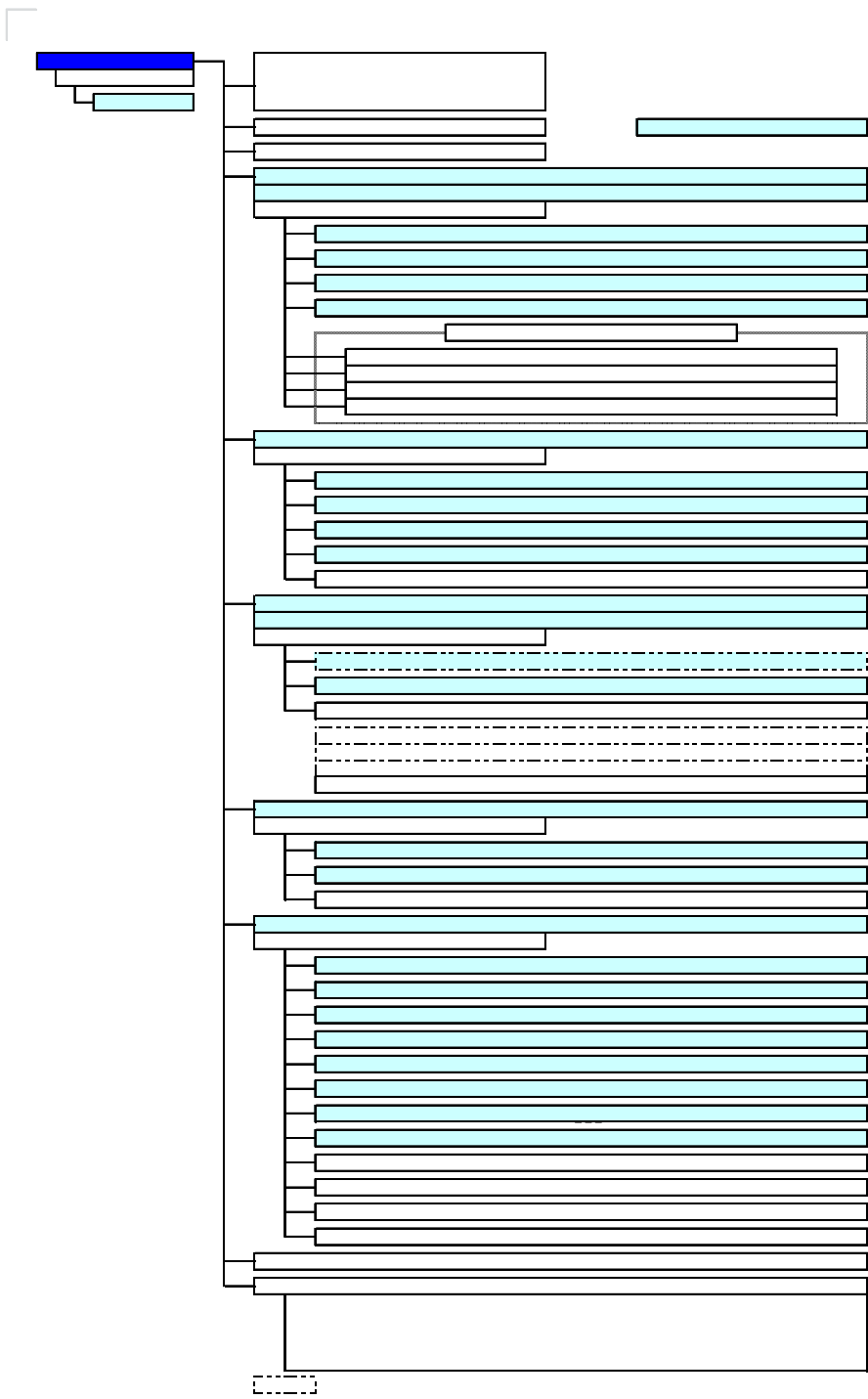
1

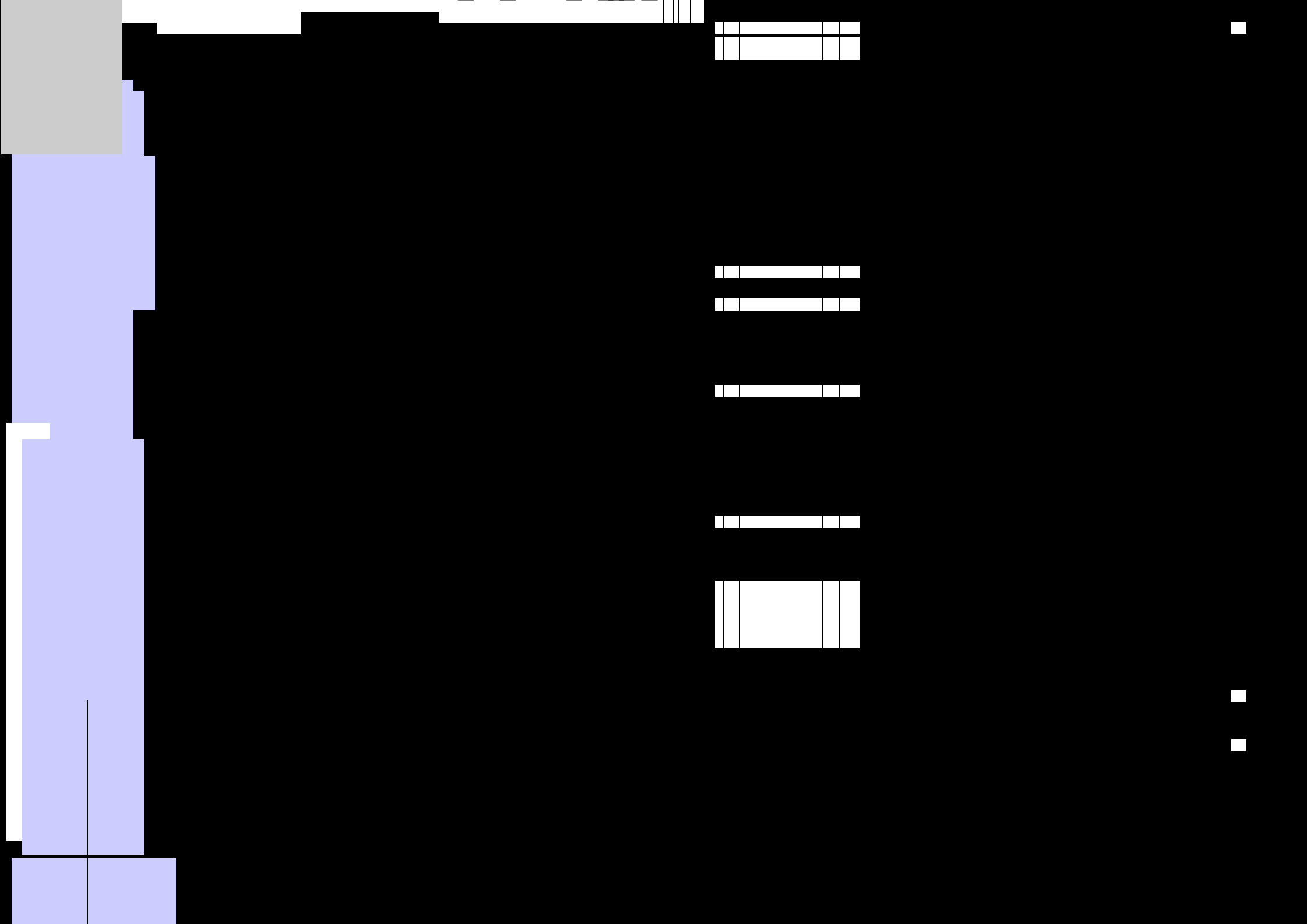
1

10

15

21





<BI BLA()>

94

23

33

19

14

22

20

10

22

22

22

INU
24 20

START

22
23



10

Medical Assistance Team 100
13

DMT Disaster
11

12



25

A

800²²

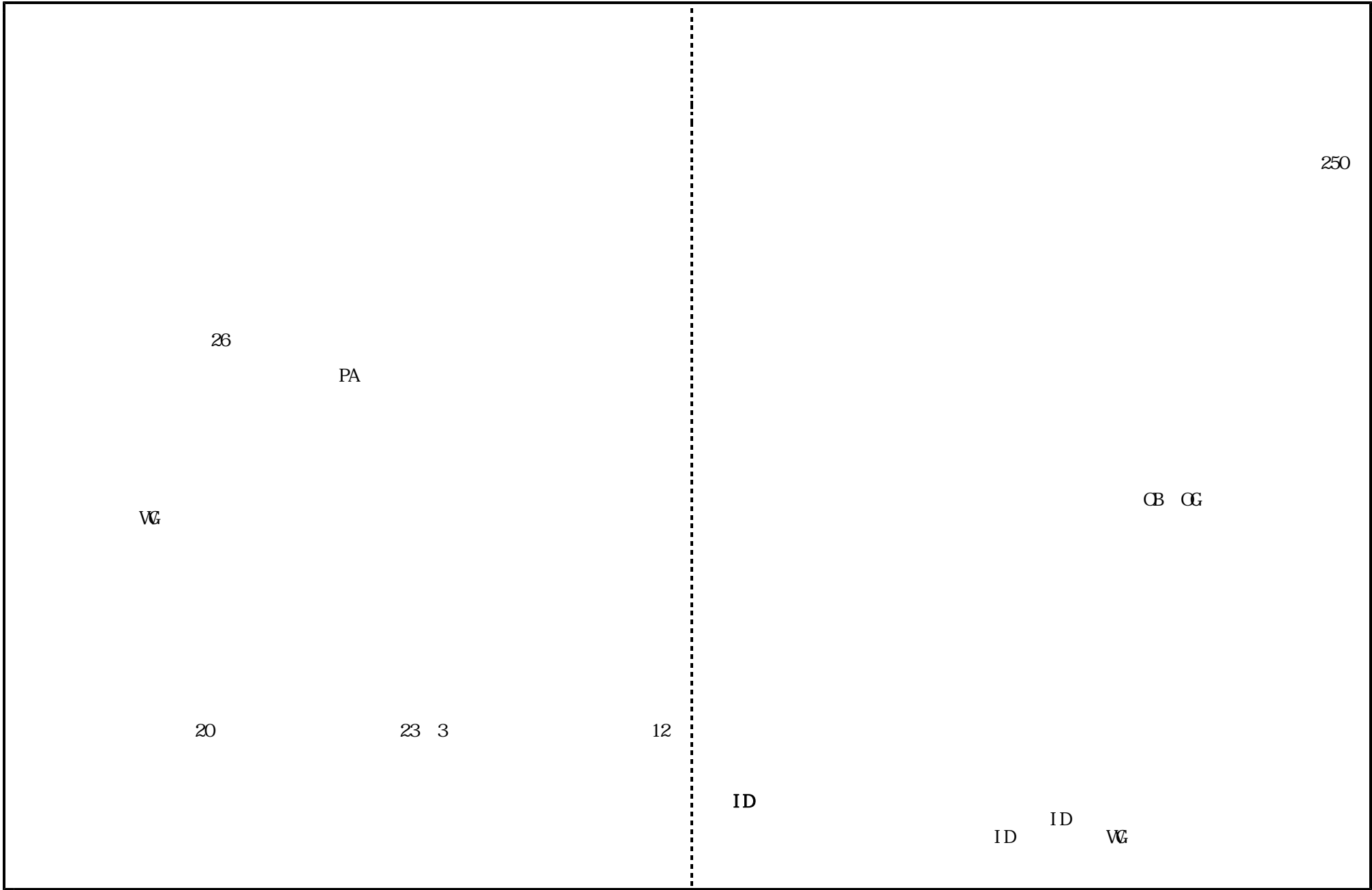
22 12

PTA

18

23 1

21



--

(1)

--

11	11		
12	12		
13	13		
		21	

14	14	22	26
		12	

(1)

/18 ²²₂₉ (1/20) 30 (3/18)

26 (6/8) 27 (9/30) 28 (11/18)

(2)

--	--

15	15		

(2)

--

16	16		
17	17		

(2)

--	--

18	18		

(2)



22

131

1

22

32

135

22

19

27

START

21

1,400

┌

┌

┐

(3)

--	--

20	20		

┌

┐

Hiroshima University Quarterly Technology Newsletter
1,000

22

3

HU styl

IT

SD
2010

33 111

5/14 30
5/17 6/7 6/28

VBL

48

4/1, 4/16, 4/19, 4/26

(C C)

31

6/25

(C C)

10/3

C C

F

PR

11/26 33

30

1/19 34

64

4/15

SD

PDCA

53

48

11

65

80

110

CB/CG

7

4

22	22		

4	I
---	---

--	--

24	24	

20						21			12
	”	“		”	“				
22								USB	
		25				Microsoft Office			17
							18,753		
						USB		USB	
		21				USB			
					176 kwh				
	LED								
	H	39							
		585							
		40							
20									
						PDCA			23

4

, 10

TA

FD

()		1,890	()		394	()		260
()	18,044	0	()	2,757	2,273	()	2,615	2,245
		15,614			90			110
		540						
(1))					
(2)								



21

22

26

22

26

14

12

23

		18	47			250
	18					
18		2006				
		23				
202,323	()		22	2,579	
				22	547	
				33,720		

	(a)	(b)	(b)/(a) x 100
	520	578	111
	580	628	108
	720	759	105
	352	391	111
	336	367	109
	352	403	114
	220	244	111
	1,980	2,164	109
	580	658	113
	180	213	118
	760	871	115
	620	681	110
	260	306	118
	880	987	112
	188(10)	222(9)	118
	264(4)	299(1)	113
	236(2)	283(0)	120
	136(2)	142(2)	104
	96(2)	114(1)	119
(1)	(20)	(13)	(65)
	940	1,060	113
	627	639	102
(5)	2		
	520	546	105
	1,147	1,187	103
	355	346	97
	80	88	110
(2)	80	88	110
	515	522	101
	190	191	101
	88	91	103
	278	282	101

	(a)	(b)	(b)/(a) x 100
	420	493	117
	540	612	113
	460	513	112
	540	586	109
	20	53	265
	1,980	2,257	114
	380	433	114
	9,960	10,969	110
	120	140	117
	128	150	117
	38	52	137
	10	7	70
(5)	1	1	
	70	83	119
	68	86	126
	50	68	136
	30	37	123
	38	44	116
	10	10	100
	314	388	124
	48	60	125
	56	65	116
	56	60	107
(5)	2	2	
	160	187	117
	44	49	111
	60	48	80
	46	80	174
	48	50	104
	20	27	135
	46	56	122
	264	310	117

	(a)	(b)	(b)/(a) x 100		(a)	(b)	(b)/(a) x 100
	()	()	()		()	()	()
	50	66	132		96	111	116
	48	91	190		27	50	185
	30	55	183		66	102	155
	128	212	166		54	75	139
	68	79	116		147	227	154
	28	34	121		15	20	133
(3)	30	39	130		24	12	50
	34	43	126		42	65	155
	37	47	127	(5)		14	
	24	32	133	(5)		2	
	26	33	127		81	113	140
	20	28	140		33	10	30
	20	27	135		39	38	97
	21	21	100		33	19	58
	41	72	176		36	15	42
	24	47	196		15	11	73
	27	51	189		33	16	48
	36	59	164		189	109	58
	43	70	163		36	20	56
	411	603	147		33	17	52
	60	66	110		21	20	95
	48	79	165		90	57	63
	38	28	74		51	110	216
	146	173	118		9	1	11
(4)	20	22	110	(3)	10	2	20
	40	42	105		11	8	73
	24	30	125		13	7	54
(4)	43	47	109		8	1	13
	127	141	111		9	4	44
	86	122	142		7	4	57
	56	85	152		7	1	14
	142	207	146		7	1	14
	2,008	2,590	129		38	40	111
	60	117	195		22	17	77
					26	16	62
					34	20	59
					42	34	81
					243	156	64

	(a)	(b)	(b)/(a) x 100
	36	49	136
	36	24	67
	27	26	96
(5)		9	
(5)		3	
	99	111	112
	228	279	122
	184	260	141
	36	24	67
	448	563	126
(5)		2	
(5)		6	
		8	
	66	60	91
	42	33	79
	108	93	86
	1, 612	1, 775	110
	168	175	104
	168	175	104
	30	11	37
	30	11	37
12	480	477	99
18	552	516	93
12	480	468	98
9	360	360	100
9	264	257	97
6	240	246	103
9	360	366	102
15	600	615	103
15	600	603	101

	(a)	(b)	(b)/(a) x 100
3	90	90	100
5	160	131	82
	4, 186	4, 129	99

	21		
22			
		22	
()	110		101 115
	129		111 166
	110		58 216
	104		
	37		
()	90	90	

22

10